

AMERICAN CAPACITOR CORPORATION

METALLIZED MYLAR CAPACITORS

ENGINEERING DATA SHEET

SERIES **D**

New Flame Retardant Styles Available

ENVIRONMENTAL DATA

APPLICATIONS

Series D Metallized Mylar capacitors are superior general purpose capacitors for both AC and DC applications. They are dry-section, non-polar, non-inductive wound capacitors with high volumetric efficiency and a low cost.

Series D Capacitors come in several styles: Oval Wrap & Fill (DW Style); Round Wrap & Fill (DR Style); Axial Epoxy Case (DE Style); Radial Epoxy Case (DF Style); Rectangular Hermetically Sealed (DG Style); Round Hermetically Sealed (DL Style); Round Wrapped Feed-Through (DQ Style). They are available in several sizes including Regular (3 Size code) and Miniature (2 Size code) as well as custom sizes to meet specific customer requirements.

Contact our Engineering Department for special sizes, configurations, capacitance values and AC applications with Anti-Corona construction at all frequencies. Custom metal enclosures are available. Custom designed Feed Through capacitors (DQ Style) are also available for filter applications to specific requirements.

OPERATING TEMPERATURE RANGE

Range: -55°C to $+125^{\circ}\text{C}$, with voltage derating.

LIFE TEST

Series D capacitors shall be capable of withstanding a test of 1000 hours at $+125^{\circ}\text{C}$ and 100% of the derated DC voltage or a test of 250 hours at $+125^{\circ}\text{C}$ and 140% of the derated DC voltage. The voltage shall be applied to each capacitor through its individual current-limiting resistor as determined from the formula $R = 0.025/C$, where C is the nominal capacitance in farads and R is in ohms.

The test procedures shall be in accordance with MIL-C-18312, except as noted herein. Not more than one failure in twelve shall be permitted. Any one of the following shall be considered a failure.

- A change in capacitance of more than 10% from it's initial value.
- An increase in Dissipation Factor to a value greater than 125% of the acceptance limit.
- A decrease in Insulation Resistance to a value less than 30% of the acceptance limit for $+25^{\circ}\text{C}$.
- A permanent short or open.

VIBRATION

Series D capacitors shall be capable of withstanding a vibration test in accordance with MIL-STD-202, Method 201. The following details and exceptions shall apply:

a. **Mounting.** The capacitor body shall be rigidly mounted by the entire body length to the vibration test fixture. The leads shall be soldered to rigidly supported terminals and so spaced that the length of each lead from the capacitor is $1/2 \pm 1/8$ inch from the edge of the supporting terminal.

b. **Measurement during Vibration.** During the last cycle in each direction, an electrical measurement shall be made to detect intermittent contacts (not to be confused with "self healing" clearings) or open or short circuiting.

c. **Examination After Vibration.** Capacitors shall be visibly examined for evidence of mechanical damage.

MOISTURE RESISTANCE

Series D capacitor Styles DG and DL (Hermetically Sealed in metal containers) as well as Metal Can Styles DB and DC shall be capable of withstanding the moisture resistance, humidity, and temperature and immersion cycling or MIL-C-18312. Styles DE and DF (Epoxy Case), Styles DW and DR (Wrap & Fill) and DQ (Feed-Through) capacitors are not intended for exposure to high humidity conditions over extended periods of time.

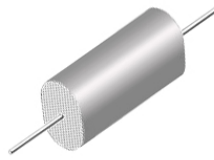
TERMINAL STRENGTH

Series D capacitors utilize tin-plated, copper-clad steel wire terminals which shall be capable of withstanding the following test without mechanical damage to the capacitor or terminals:

a. **Pull Test.** The capacitor shall withstand a steady pull of 5 pounds axially to the leads for 1 minute.

b. **Bend Test.** The wire lead terminals shall be bent at a point of 1/4 inch from the body of the capacitor, first 90 degrees in one direction, then back to the original position, and then 90 degrees in the opposite direction.

METALLIZED MYLAR WRAP AND FILL, OVAL AXIAL LEAD CAPACITORS



DW3
METALLIZED MYLAR
WRAP & FILL, OVAL
REGULAR SERIES

ORDERING DESCRIPTION

Capacitor, fixed: Metallized Mylar dielectric; extended foil construction; tin-plated copper-clad steel wire axial leads; encased in skin-tight plastic wrap with epoxy end fill. In addition to the standard Tape, New Flame Retardant Tape is available meeting UL 510 Flame Retardant Specifications.

APPLICATION NOTES

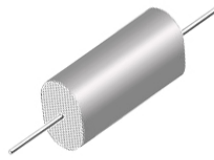
Wrap & Fill capacitors are not intended for exposure to high humidity conditions over extended periods of time. For stringent environmental conditions, Wrap & Fill capacitors should be used in encapsulated or hermetically sealed circuitry. For UL 510 Flame Retardant Tape add -R to the end of the Part Number.

SELECTION AND ORDERING TABLES Select voltage rating, capacitance and tolerance, read Part Number to the right.

| MFD | 35VDC 20VAC | | | | 50VDC 40VAC | | | | 100VDC 70VAC | | | | 200VDC 120VAC | | | | | | | | | | | |
|-------|-------------|--------|--------|----------|-------------|--------|--------|----------|--------------|--------|--------|----------|---------------|--------|--------|----------|--------|--------|--------|--------|--------|--------|--------|--------|
| | T | | W | | L | | PART # | | T | | W | | L | | PART # | | T | | W | | L | | PART # | |
| | + .05" | + .05" | + .05" | + .05" | + .05" | + .05" | + .05" | + .05" | + .05" | + .05" | + .05" | + .05" | + .05" | + .05" | + .05" | + .05" | + .05" | + .05" | + .05" | + .05" | + .05" | + .05" | + .05" | + .05" |
| .001 | .09 | .18 | .40 | DW3S102K | .09 | .18 | .40 | DW3C102K | .09 | .18 | .40 | DW3D102K | .09 | .18 | .40 | DW3E102K | | | | | | | | |
| .0027 | .09 | .18 | .40 | DW3S272K | .09 | .18 | .40 | DW3C272K | .09 | .18 | .40 | DW3D272K | .09 | .18 | .40 | DW3E272K | | | | | | | | |
| .0033 | .09 | .18 | .40 | DW3S332K | .09 | .18 | .40 | DW3C332K | .09 | .18 | .40 | DW3D332K | .09 | .18 | .40 | DW3E332K | | | | | | | | |
| .0056 | .09 | .18 | .40 | DW3S562K | .09 | .18 | .40 | DW3C562K | .09 | .18 | .40 | DW3D562K | .09 | .18 | .40 | DW3E562K | | | | | | | | |
| .0068 | .09 | .18 | .40 | DW3S682K | .09 | .18 | .40 | DW3C682K | .09 | .18 | .40 | DW3D682K | .09 | .18 | .40 | DW3E682K | | | | | | | | |
| .0082 | .09 | .18 | .40 | DW3S822K | .09 | .18 | .40 | DW3C822K | .09 | .18 | .40 | DW3D822K | .09 | .18 | .40 | DW3E822K | | | | | | | | |
| .01 | .09 | .18 | .40 | DW3S103K | .09 | .18 | .40 | DW3C103K | .09 | .18 | .40 | DW3D103K | .15 | .26 | .40 | DW3E103K | | | | | | | | |
| .012 | .09 | .18 | .40 | DW3S123K | .09 | .18 | .40 | DW3C123K | .09 | .18 | .40 | DW3D123K | .15 | .26 | .40 | DW3E123K | | | | | | | | |
| .015 | .09 | .18 | .40 | DW3S153K | .09 | .18 | .40 | DW3C153K | .09 | .18 | .40 | DW3D153K | .15 | .26 | .40 | DW3E153K | | | | | | | | |
| .018 | .09 | .18 | .40 | DW3S183K | .09 | .18 | .40 | DW3C183K | .09 | .18 | .40 | DW3D183K | .15 | .26 | .40 | DW3E183K | | | | | | | | |
| .022 | .09 | .18 | .40 | DW3S223K | .09 | .18 | .40 | DW3C223K | .09 | .18 | .40 | DW3D223K | .15 | .26 | .40 | DW3E223K | | | | | | | | |
| .027 | .09 | .18 | .40 | DW3S273K | .09 | .18 | .40 | DW3C273K | .09 | .18 | .40 | DW3D273K | .15 | .28 | .40 | DW3E273K | | | | | | | | |
| .033 | .09 | .18 | .40 | DW3S333K | .09 | .18 | .40 | DW3C333K | .10 | .21 | .40 | DW3D333K | .15 | .28 | .40 | DW3E333K | | | | | | | | |
| .039 | .09 | .18 | .40 | DW3S393K | .09 | .18 | .40 | DW3C393K | .10 | .23 | .40 | DW3D393K | .15 | .28 | .40 | DW3E393K | | | | | | | | |
| .047 | .09 | .18 | .40 | DW3S473K | .09 | .18 | .40 | DW3C473K | .11 | .24 | .40 | DW3D473K | .15 | .28 | .40 | DW3E473K | | | | | | | | |
| .056 | .09 | .18 | .40 | DW3S563K | .09 | .19 | .40 | DW3C563K | .13 | .25 | .40 | DW3D563K | .16 | .29 | .53 | DW3E563K | | | | | | | | |
| .068 | .09 | .18 | .40 | DW3S683K | .10 | .20 | .40 | DW3C683K | .14 | .27 | .40 | DW3D683K | .17 | .30 | .53 | DW3E683K | | | | | | | | |
| .082 | .09 | .18 | .40 | DW3S823K | .11 | .21 | .40 | DW3C823K | .09 | .22 | .53 | DW3D823K | .18 | .31 | .53 | DW3E823K | | | | | | | | |
| .10 | .09 | .18 | .40 | DW3S104K | .13 | .22 | .40 | DW3C104K | .11 | .24 | .53 | DW3D104K | .22 | .35 | .53 | DW3E104K | | | | | | | | |
| .12 | .09 | .18 | .40 | DW3S124K | .14 | .24 | .40 | DW3C124K | .13 | .26 | .53 | DW3D124K | .23 | .35 | .53 | DW3E124K | | | | | | | | |
| .15 | .09 | .18 | .40 | DW3S154K | .11 | .21 | .53 | DW3C154K | .15 | .28 | .53 | DW3D154K | .21 | .34 | .65 | DW3E154K | | | | | | | | |
| .18 | .10 | .20 | .40 | DW3S184K | .12 | .22 | .53 | DW3C184K | .17 | .30 | .53 | DW3D184K | .24 | .35 | .65 | DW3E184K | | | | | | | | |
| .22 | .11 | .22 | .40 | DW3S224K | .13 | .23 | .53 | DW3C224K | .19 | .32 | .53 | DW3D224K | .25 | .35 | .65 | DW3E224K | | | | | | | | |
| .25 | .12 | .22 | .40 | DW3S254K | .14 | .24 | .53 | DW3C254K | .16 | .29 | .65 | DW3D254K | .24 | .37 | .78 | DW3E254K | | | | | | | | |
| .27 | .13 | .22 | .40 | DW3S274K | .15 | .25 | .53 | DW3C274K | .17 | .30 | .65 | DW3D274K | .25 | .38 | .78 | DW3E274K | | | | | | | | |
| .33 | .15 | .24 | .40 | DW3S334K | .17 | .26 | .53 | DW3C334K | .19 | .32 | .65 | DW3D334K | .28 | .41 | .78 | DW3E334K | | | | | | | | |
| .39 | .16 | .25 | .40 | DW3S394K | .18 | .28 | .53 | DW3C394K | .17 | .30 | .78 | DW3D394K | .30 | .43 | .78 | DW3E394K | | | | | | | | |
| .47 | .18 | .28 | .40 | DW3S474K | .20 | .30 | .53 | DW3C474K | .19 | .32 | .78 | DW3D474K | .32 | .45 | .78 | DW3E474K | | | | | | | | |
| .50 | .11 | .21 | .53 | DW3S504K | .21 | .31 | .53 | DW3C504K | .20 | .33 | .78 | DW3D504K | .33 | .46 | .78 | DW3E504K | | | | | | | | |
| .56 | .12 | .22 | .53 | DW3S564K | .22 | .32 | .53 | DW3C564K | .21 | .34 | .78 | DW3D564K | .31 | .44 | .97 | DW3E564K | | | | | | | | |
| .68 | .13 | .23 | .53 | DW3S684K | .25 | .35 | .53 | DW3C684K | .23 | .36 | .78 | DW3D684K | .33 | .46 | .97 | DW3E684K | | | | | | | | |
| .75 | .14 | .24 | .53 | DW3S754K | .26 | .36 | .53 | DW3C754K | .26 | .36 | .78 | DW3D754K | .35 | .48 | .97 | DW3E754K | | | | | | | | |
| .82 | .15 | .24 | .53 | DW3S824K | .22 | .31 | .65 | DW3C824K | .27 | .38 | .78 | DW3D824K | .33 | .46 | 1.17 | DW3E824K | | | | | | | | |
| 1.0 | .17 | .26 | .53 | DW3S105K | .24 | .34 | .65 | DW3C105K | .25 | .36 | .97 | DW3D105K | .36 | .49 | 1.17 | DW3E105K | | | | | | | | |
| 1.2 | .19 | .28 | .53 | DW3S125K | .21 | .33 | .78 | DW3C125K | .27 | .39 | .97 | DW3D125K | .26 | .46 | 1.68 | DW3E125K | | | | | | | | |
| 1.5 | .22 | .31 | .53 | DW3S155K | .24 | .36 | .78 | DW3C155K | .31 | .42 | .97 | DW3D155K | .31 | .53 | 1.68 | DW3E155K | | | | | | | | |
| 1.8 | .25 | .34 | .53 | DW3S185K | .30 | .36 | .78 | DW3C185K | .33 | .49 | .97 | DW3D185K | .35 | .57 | 1.68 | DW3E185K | | | | | | | | |
| 2.0 | .26 | .35 | .53 | DW3S205K | .31 | .39 | .78 | DW3C205K | .34 | .50 | .97 | DW3D205K | .37 | .59 | 1.68 | DW3E205K | | | | | | | | |
| 3.0 | .25 | .35 | .65 | DW3S305K | .31 | .43 | .97 | DW3C305K | .37 | .53 | 1.17 | DW3D305K | .47 | .69 | 1.68 | DW3E305K | | | | | | | | |
| 4.0 | .25 | .35 | .78 | DW3S405K | .31 | .43 | 1.17 | DW3C405K | .35 | .51 | 1.68 | DW3D405K | .58 | .79 | 1.68 | DW3E405K | | | | | | | | |
| 5.0 | .28 | .38 | .78 | DW3S505K | .34 | .46 | 1.17 | DW3C505K | .38 | .54 | 1.68 | DW3D505K | .64 | .85 | 1.68 | DW3E505K | | | | | | | | |
| 6.0 | .31 | .42 | .78 | DW3S605K | .37 | .52 | 1.17 | DW3C605K | .40 | .56 | 2.00 | DW3D605K | .70 | .91 | 1.68 | DW3E605K | | | | | | | | |
| 8.0 | .32 | .42 | .97 | DW3S805K | .44 | .56 | 1.17 | DW3C805K | .45 | .61 | 2.00 | DW3D805K | .79 | 1.03 | 1.68 | DW3E805K | | | | | | | | |
| 10.0 | .37 | .46 | .97 | DW3S106K | .50 | .62 | 1.17 | DW3C106K | .51 | .67 | 2.00 | DW3D106K | .85 | 1.18 | 1.68 | DW3E106K | | | | | | | | |
| 12.0 | .30 | .48 | 1.17 | DW3S126K | .55 | .69 | 1.17 | DW3C126K | .56 | .72 | 2.00 | DW3D126K | .82 | 1.06 | 2.25 | DW3E126K | | | | | | | | |
| 15.0 | .35 | .51 | 1.17 | DW3S156K | .48 | .60 | 1.68 | DW3C156K | .60 | .82 | 2.00 | DW3D156K | .91 | 1.15 | 2.25 | DW3E156K | | | | | | | | |
| 20.0 | .41 | .57 | 1.17 | DW3S206K | .52 | .76 | 1.68 | DW3C206K | .67 | .91 | 2.00 | DW3D206K | 1.07 | 1.30 | 2.25 | DW3E206K | | | | | | | | |
| 30.0 | .52 | .69 | 1.17 | DW3S306K | .64 | .88 | 1.68 | DW3C306K | .82 | 1.06 | 2.00 | DW3D306K | 1.31 | 1.55 | 2.25 | DW3E306K | | | | | | | | |
| 40.0 | .61 | .78 | 1.17 | DW3S406K | .73 | .97 | 1.68 | DW3C406K | .95 | 1.19 | 2.00 | DW3D406K | 1.27 | 1.51 | 3.25 | DW3E406K | | | | | | | | |
| 50.0 | .60 | .77 | 1.45 | DW3S506K | .82 | 1.06 | 1.68 | DW3C506K | 1.06 | 1.30 | 2.00 | DW3D506K | 1.41 | 1.65 | 3.25 | DW3E506K | | | | | | | | |
| 75.0 | .67 | .84 | 1.68 | DW3S756K | 1.01 | 1.25 | 1.68 | DW3C756K | 1.31 | 1.55 | 2.00 | DW3D756K | 1.73 | 1.97 | 3.25 | DW3E756K | | | | | | | | |
| 100.0 | .65 | .83 | 2.25 | DW3S107K | 1.17 | 1.41 | 1.68 | DW3C107K | 1.52 | 1.76 | 2.00 | DW3D107K | 1.99 | 2.23 | 3.25 | DW3E107K | | | | | | | | |

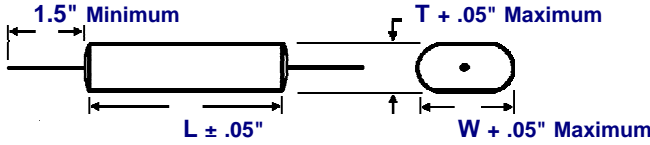
Note: Replace the last digit **K** with the desired tolerance code from the tolerance table. For an in-between value use the next larger value's dimensions. Custom sizes are readily available. All dimensions are in inches. All +.05" dimension tolerances are Maximum.

METALLIZED MYLAR WRAP AND FILL, OVAL AXIAL LEAD CAPACITORS



DW3
METALLIZED MYLAR
WRAP & FILL, OVAL
REGULAR SERIES

DIMENSIONS See tables for specific T, W, L values.



WIRE SIZE (Length 1.5" Minimum)

| BODY LENGTH (L) | WIRE SIZE | |
|-----------------|-----------|----------|
| | AWG No. | Diameter |
| ≤ 0.65" | 24 | 0.020" |
| > 0.65" ≤ 1.00" | 22 | 0.025" |
| > 1.00" | 20 | 0.032" |

For UL 510 Flame Retardant Tape add -R to the end of Part Number.

SELECTION AND ORDERING TABLES Select voltage rating, capacitance and tolerance, read Part Number to the right.

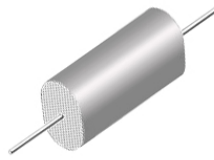
| MFD | 400VDC 160VAC | | | | 600VDC 230VAC | | | | 1000VDC 360VAC | | | | 2000VDC 700VAC | | | | |
|-------|---------------|--------|--------|----------|---------------|--------|--------|----------|----------------|--------|--------|----------|----------------|--------|--------|----------|--------|
| | RATING | T | W | L | PART # | T | W | L | PART # | T | W | L | PART # | T | W | L | PART # |
| | + .05" | + .05" | ± .05" | | + .05" | + .05" | ± .05" | | + .05" | + .05" | ± .05" | | + .05" | + .05" | ± .05" | | + .05" |
| .001 | .09 | .18 | .40 | DW3G102K | .09 | .18 | .40 | DW3J102K | .14 | .23 | .97 | DW3M102K | .14 | .23 | .97 | DW3R102K | |
| .0012 | .09 | .18 | .40 | DW3G122K | .09 | .18 | .40 | DW3J122K | .14 | .23 | .97 | DW3M122K | .14 | .23 | .97 | DW3R122K | |
| .0015 | .09 | .18 | .40 | DW3G152K | .09 | .18 | .40 | DW3J152K | .14 | .23 | .97 | DW3M152K | .14 | .23 | .97 | DW3R152K | |
| .0018 | .09 | .18 | .40 | DW3G182K | .09 | .18 | .40 | DW3J182K | .14 | .23 | .97 | DW3M182K | .14 | .23 | .97 | DW3R182K | |
| .0022 | .09 | .18 | .40 | DW3G222K | .09 | .18 | .40 | DW3J222K | .15 | .24 | .97 | DW3M222K | .16 | .25 | .97 | DW3R222K | |
| .0027 | .09 | .18 | .40 | DW3G272K | .09 | .18 | .40 | DW3J272K | .15 | .24 | .97 | DW3M272K | .17 | .26 | .97 | DW3R272K | |
| .0033 | .09 | .18 | .40 | DW3G332K | .09 | .18 | .40 | DW3J332K | .15 | .24 | .97 | DW3M332K | .19 | .28 | .97 | DW3R332K | |
| .0039 | .09 | .18 | .40 | DW3G392K | .09 | .18 | .40 | DW3J392K | .15 | .24 | .97 | DW3M392K | .21 | .30 | .97 | DW3R392K | |
| .0047 | .09 | .18 | .40 | DW3G472K | .09 | .18 | .40 | DW3J472K | .16 | .25 | .97 | DW3M472K | .23 | .32 | .97 | DW3R472K | |
| .0056 | .09 | .18 | .40 | DW3G562K | .10 | .19 | .40 | DW3J562K | .16 | .25 | .97 | DW3M562K | .25 | .34 | .97 | DW3R562K | |
| .0068 | .09 | .18 | .40 | DW3G682K | .11 | .20 | .40 | DW3J682K | .16 | .25 | .97 | DW3M682K | .28 | .37 | .97 | DW3R682K | |
| .0082 | .09 | .18 | .40 | DW3G822K | .13 | .26 | .40 | DW3J822K | .16 | .25 | .97 | DW3M822K | .30 | .39 | .97 | DW3R822K | |
| .01 | .15 | .26 | .40 | DW3G103K | .13 | .26 | .53 | DW3J103K | .17 | .26 | .97 | DW3M103K | .34 | .43 | .97 | DW3R103K | |
| .012 | .14 | .27 | .53 | DW3G123K | .14 | .27 | .53 | DW3J123K | .19 | .28 | .97 | DW3M123K | .37 | .46 | .97 | DW3R123K | |
| .015 | .15 | .28 | .53 | DW3G153K | .16 | .29 | .53 | DW3J153K | .21 | .30 | .97 | DW3M153K | .41 | .50 | .97 | DW3R153K | |
| .018 | .15 | .28 | .53 | DW3G183K | .18 | .31 | .53 | DW3J183K | .23 | .32 | .97 | DW3M183K | .45 | .54 | .97 | DW3R183K | |
| .022 | .15 | .28 | .53 | DW3G223K | .20 | .33 | .53 | DW3J223K | .25 | .34 | .97 | DW3M223K | .27 | .51 | 1.31 | DW3R223K | |
| .027 | .17 | .30 | .53 | DW3G273K | .23 | .35 | .53 | DW3J273K | .28 | .37 | .97 | DW3M273K | .31 | .55 | 1.31 | DW3R273K | |
| .033 | .18 | .31 | .53 | DW3G333K | .19 | .32 | .65 | DW3J333K | .31 | .40 | .97 | DW3M333K | .35 | .59 | 1.31 | DW3R333K | |
| .039 | .21 | .34 | .53 | DW3G393K | .21 | .34 | .65 | DW3J393K | .33 | .42 | .97 | DW3M393K | .39 | .62 | 1.31 | DW3R393K | |
| .047 | .22 | .35 | .53 | DW3G473K | .25 | .35 | .65 | DW3J473K | .36 | .45 | .97 | DW3M473K | .43 | .67 | 1.31 | DW3R473K | |
| .056 | .23 | .35 | .53 | DW3G563K | .22 | .35 | .78 | DW3J563K | .40 | .49 | .97 | DW3M563K | .47 | .71 | 1.31 | DW3R563K | |
| .068 | .24 | .35 | .53 | DW3G683K | .25 | .38 | .78 | DW3J683K | .44 | .53 | .97 | DW3M683K | .53 | .77 | 1.31 | DW3R683K | |
| .082 | .25 | .34 | .65 | DW3G823K | .27 | .40 | .78 | DW3J823K | .26 | .50 | 1.31 | DW3M823K | .46 | .70 | 1.68 | DW3R823K | |
| .10 | .25 | .35 | .65 | DW3G104K | .30 | .43 | .78 | DW3J104K | .30 | .54 | 1.31 | DW3M104K | .51 | .75 | 1.68 | DW3R104K | |
| .12 | .23 | .36 | .78 | DW3G124K | .33 | .46 | .78 | DW3J124K | .33 | .57 | 1.31 | DW3M124K | .58 | .82 | 1.68 | DW3R124K | |
| .15 | .26 | .39 | .78 | DW3G154K | .32 | .45 | .97 | DW3J154K | .37 | .61 | 1.31 | DW3M154K | .66 | .90 | 1.68 | DW3R154K | |
| .18 | .29 | .42 | .78 | DW3G184K | .35 | .48 | .97 | DW3J184K | .42 | .66 | 1.31 | DW3M184K | .72 | .96 | 1.68 | DW3R184K | |
| .22 | .31 | .44 | .78 | DW3G224K | .33 | .46 | 1.17 | DW3J224K | .47 | .71 | 1.31 | DW3M224K | .82 | 1.06 | 1.68 | DW3R224K | |
| .25 | .34 | .47 | .78 | DW3G254K | .36 | .49 | 1.17 | DW3J254K | .50 | .74 | 1.31 | DW3M254K | .88 | 1.13 | 1.68 | DW3R254K | |
| .27 | .35 | .48 | .78 | DW3G274K | .38 | .51 | 1.17 | DW3J274K | .53 | .77 | 1.31 | DW3M274K | .92 | 1.16 | 1.68 | DW3R274K | |
| .33 | .32 | .44 | .97 | DW3G334K | .42 | .55 | 1.17 | DW3J334K | .46 | .70 | 1.68 | DW3M334K | 1.05 | 1.29 | 1.68 | DW3R334K | |
| .39 | .31 | .44 | 1.17 | DW3G394K | .45 | .60 | 1.17 | DW3J394K | .51 | .75 | 1.68 | DW3M394K | .85 | 1.10 | 2.50 | DW3R394K | |
| .47 | .35 | .48 | 1.17 | DW3G474K | .50 | .65 | 1.17 | DW3J474K | .56 | .80 | 1.68 | DW3M474K | .95 | 1.19 | 2.50 | DW3R474K | |
| .50 | .36 | .49 | 1.17 | DW3G504K | .51 | .67 | 1.17 | DW3J504K | .58 | .82 | 1.68 | DW3M504K | | | | | |
| .56 | .38 | .52 | 1.17 | DW3G564K | .43 | .59 | 1.68 | DW3J564K | .62 | .86 | 1.68 | DW3M564K | | | | | |
| .68 | .42 | .55 | 1.17 | DW3G684K | .47 | .63 | 1.68 | DW3J684K | .69 | .93 | 1.68 | DW3M684K | | | | | |
| .75 | .44 | .57 | 1.17 | DW3G754K | .49 | .65 | 1.68 | DW3J754K | .73 | .97 | 1.68 | DW3M754K | | | | | |
| .82 | .46 | .59 | 1.17 | DW3G824K | .53 | .69 | 1.68 | DW3J824K | .77 | 1.01 | 1.68 | DW3M824K | | | | | |
| 1.0 | .52 | .65 | 1.17 | DW3G105K | .59 | .75 | 1.68 | DW3J105K | .86 | 1.10 | 1.68 | DW3M105K | | | | | |
| 1.2 | .40 | .62 | 1.68 | DW3G125K | .66 | .83 | 1.68 | DW3J125K | .73 | .97 | 2.50 | DW3M125K | | | | | |
| 1.5 | .45 | .67 | 1.68 | DW3G155K | .73 | .90 | 1.68 | DW3J155K | .80 | 1.04 | 2.50 | DW3M155K | | | | | |
| 1.8 | .51 | .72 | 1.68 | DW3G185K | .79 | 1.00 | 1.68 | DW3J185K | .89 | 1.13 | 2.50 | DW3M185K | | | | | |
| 2.0 | .54 | .76 | 1.68 | DW3G205K | .83 | 1.04 | 1.68 | DW3J205K | .94 | 1.18 | 2.50 | DW3M205K | | | | | |
| 3.0 | .68 | .90 | 1.68 | DW3G305K | 1.02 | 1.19 | 1.68 | DW3J305K | 1.17 | 1.41 | 2.50 | DW3M305K | | | | | |
| 4.0 | .79 | 1.02 | 1.68 | DW3G405K | 1.02 | 1.20 | 2.25 | DW3J405K | 1.36 | 1.60 | 2.50 | DW3M405K | | | | | |
| 5.0 | .90 | 1.13 | 1.68 | DW3G505K | 1.13 | 1.34 | 2.25 | DW3J505K | 1.53 | 1.77 | 2.50 | DW3M505K | | | | | |
| 6.0 | .78 | 1.12 | 2.25 | DW3G605K | 1.24 | 1.48 | 2.25 | DW3J605K | 1.69 | 1.93 | 2.50 | DW3M605K | | | | | |
| 8.0 | .90 | 1.24 | 2.25 | DW3G805K | 1.42 | 1.66 | 2.25 | DW3J805K | 1.70 | 1.94 | 3.25 | DW3M805K | | | | | |
| 10.0 | 1.11 | 1.34 | 2.25 | DW3G106K | 1.58 | 1.82 | 2.25 | DW3J106K | 1.90 | 2.14 | 3.25 | DW3M106K | | | | | |
| 12.0 | 1.17 | 1.41 | 2.25 | DW3G126K | 1.72 | 1.96 | 2.25 | DW3J126K | 2.08 | 2.32 | 3.25 | DW3M126K | | | | | |
| 15.0 | 1.30 | 1.54 | 2.25 | DW3G156K | 1.92 | 2.16 | 2.25 | DW3J156K | 2.33 | 2.57 | 3.25 | DW3M156K | | | | | |

TOLERANCE TABLE

| Code | Tolerance |
|------|------------------------|
| A | ± 0.1% ♦ |
| B | ± 0.25% ♦ |
| D | ± 0.5% ♦ |
| F | ± 1% ♦ |
| G | ± 2% ♦ |
| H | ± 3% ♦ |
| J | ± 5% |
| K | ± 10% |
| M | ± 20% |
| N | ± 30% |
| P | GMV |
| S | -10% +30% |
| T | -10% +50% |
| V | -10% +20% |
| X | Special |
| ♦ | Temperature Stabilized |

Note: Replace the last digit **K** with the desired tolerance code from the tolerance table. For an in-between value use the next larger value's dimensions. Custom sizes are readily available. All dimensions are in inches. All +.05" dimension tolerances are Maximum.

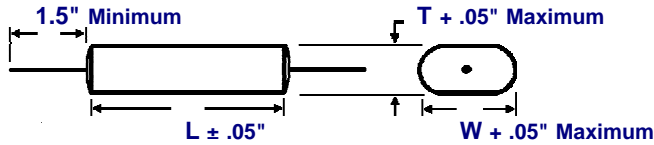
METALLIZED MYLAR WRAP AND FILL, OVAL AXIAL LEAD CAPACITORS



DW2
METALLIZED MYLAR
WRAP & FILL, OVAL
MINIATURE SERIES

DIMENSIONS See tables for specific T, W, L values.

WIRE SIZE (Length 1.5" Minimum)



| BODY LENGTH (L) | WIRE SIZE | |
|-----------------|-----------|----------|
| | AWG No. | Diameter |
| ≤ 0.65" | 24 | 0.020" |
| > 0.65" ≤ 1.00" | 22 | 0.025" |
| > 1.00" | 20 | 0.032" |

SELECTION AND ORDERING TABLES Select voltage rating, capacitance and tolerance, read Part Number to the right.
For UL 510 Flame Retardant Tape add -R to the end of Part Number.

| MFD | 100VDC 40VAC | | | | 200VDC 100VAC | | | | 400VDC 160VAC | | | | 600VDC 230VAC | | | | | |
|-------|--------------|-----|--------|--------|---------------|--------|--------|--------|---------------|--------|--------|--------|---------------|--------|--------|--------|----------|--------|
| | RATING | | T | W | L | PART # | T | W | L | PART # | T | W | L | PART # | T | W | L | PART # |
| | | | + .05" | + .05" | ± .05" | | + .05" | + .05" | ± .05" | | + .05" | + .05" | ± .05" | | + .05" | + .05" | ± .05" | |
| .001 | | .09 | .18 | .40 | DW2D102K | .09 | .18 | .40 | DW2E102K | .09 | .18 | .40 | DW2G102K | .09 | .18 | .40 | DW2J102K | |
| .0012 | | .09 | .18 | .40 | DW2D122K | .09 | .18 | .40 | DW2E122K | .09 | .18 | .40 | DW2G122K | .09 | .18 | .40 | DW2J122K | |
| .0018 | | .09 | .18 | .40 | DW2D182K | .09 | .18 | .40 | DW2E182K | .09 | .18 | .40 | DW2G182K | .09 | .18 | .40 | DW2J182K | |
| .0022 | | .09 | .18 | .40 | DW2D222K | .09 | .18 | .40 | DW2E222K | .09 | .18 | .40 | DW2G222K | .09 | .18 | .40 | DW2J222K | |
| .0027 | | .09 | .18 | .40 | DW2D272K | .09 | .18 | .40 | DW2E272K | .09 | .18 | .40 | DW2G272K | .10 | .19 | .40 | DW2J272K | |
| .0033 | | .09 | .18 | .40 | DW2D332K | .09 | .18 | .40 | DW2E332K | .09 | .18 | .40 | DW2G332K | .09 | .18 | .53 | DW2J332K | |
| .0047 | | .09 | .18 | .40 | DW2D472K | .09 | .18 | .40 | DW2E472K | .09 | .18 | .40 | DW2G472K | .09 | .18 | .53 | DW2J472K | |
| .0056 | | .09 | .18 | .40 | DW2D562K | .09 | .18 | .40 | DW2E562K | .10 | .20 | .40 | DW2G562K | .09 | .18 | .53 | DW2J562K | |
| .0068 | | .09 | .18 | .40 | DW2D682K | .09 | .18 | .40 | DW2E682K | .11 | .21 | .40 | DW2G682K | .11 | .20 | .53 | DW2J682K | |
| .0082 | | .09 | .18 | .40 | DW2D822K | .09 | .18 | .40 | DW2E822K | .09 | .18 | .53 | DW2G822K | .12 | .22 | .53 | DW2J822K | |
| .01 | | .09 | .18 | .40 | DW2D103K | .09 | .18 | .40 | DW2E103K | .09 | .18 | .53 | DW2G103K | .14 | .23 | .53 | DW2J103K | |
| .012 | | .09 | .18 | .40 | DW2D123K | .09 | .18 | .40 | DW2E123K | .09 | .18 | .53 | DW2G123K | .15 | .25 | .53 | DW2J123K | |
| .015 | | .09 | .18 | .40 | DW2D153K | .09 | .18 | .40 | DW2E153K | .09 | .18 | .53 | DW2G153K | .18 | .27 | .53 | DW2J153K | |
| .018 | | .09 | .18 | .40 | DW2D183K | .10 | .20 | .40 | DW2E183K | .11 | .20 | .53 | DW2G183K | .20 | .29 | .53 | DW2J183K | |
| .022 | | .09 | .18 | .40 | DW2D223K | .09 | .18 | .53 | DW2E223K | .12 | .22 | .53 | DW2G223K | .22 | .32 | .53 | DW2J223K | |
| .027 | | .09 | .18 | .40 | DW2D273K | .09 | .18 | .53 | DW2E273K | .14 | .23 | .53 | DW2G273K | .20 | .29 | .65 | DW2J273K | |
| .033 | | .09 | .18 | .40 | DW2D333K | .09 | .18 | .53 | DW2E333K | .16 | .25 | .53 | DW2G333K | .22 | .31 | .65 | DW2J333K | |
| .039 | | .09 | .18 | .40 | DW2D393K | .09 | .18 | .53 | DW2E393K | .17 | .27 | .53 | DW2G393K | .20 | .30 | .78 | DW2J393K | |
| .047 | | .09 | .18 | .40 | DW2D473K | .09 | .18 | .53 | DW2E473K | .19 | .29 | .53 | DW2G473K | .25 | .32 | .78 | DW2J473K | |
| .056 | | .09 | .18 | .40 | DW2D563K | .11 | .20 | .53 | DW2E563K | .22 | .31 | .53 | DW2G563K | .25 | .34 | .78 | DW2J563K | |
| .068 | | .10 | .19 | .40 | DW2D683K | .12 | .22 | .53 | DW2E683K | .18 | .27 | .65 | DW2G683K | .28 | .37 | .78 | DW2J683K | |
| .082 | | .11 | .20 | .40 | DW2D823K | .14 | .23 | .53 | DW2E823K | .20 | .29 | .65 | DW2G823K | .31 | .41 | .78 | DW2J823K | |
| .10 | | .09 | .18 | .53 | DW2D104K | .16 | .25 | .53 | DW2E104K | .22 | .32 | .65 | DW2G104K | .31 | .40 | .95 | DW2J104K | |
| .12 | | .09 | .18 | .53 | DW2D124K | .17 | .27 | .53 | DW2E124K | .20 | .30 | .78 | DW2G124K | .24 | .41 | 1.17 | DW2J124K | |
| .15 | | .09 | .18 | .53 | DW2D154K | .20 | .29 | .53 | DW2E154K | .23 | .33 | .78 | DW2G154K | .28 | .44 | 1.17 | DW2J154K | |
| .18 | | .09 | .18 | .53 | DW2D184K | .22 | .32 | .53 | DW2E184K | .26 | .34 | .78 | DW2G184K | .31 | .48 | 1.17 | DW2J184K | |
| .22 | | .10 | .20 | .53 | DW2D224K | .18 | .28 | .65 | DW2E224K | .29 | .39 | .78 | DW2G224K | .35 | .52 | 1.17 | DW2J224K | |
| .27 | | .12 | .22 | .53 | DW2D274K | .20 | .29 | .65 | DW2E274K | .33 | .42 | .78 | DW2G274K | .40 | .57 | 1.17 | DW2J274K | |
| .33 | | .14 | .23 | .53 | DW2D334K | .24 | .33 | .65 | DW2E334K | .32 | .41 | .95 | DW2G334K | .45 | .61 | 1.17 | DW2J334K | |
| .39 | | .15 | .25 | .53 | DW2D394K | .21 | .30 | .78 | DW2E394K | .25 | .42 | 1.17 | DW2G394K | .43 | .59 | 1.45 | DW2J394K | |
| .47 | | .17 | .27 | .53 | DW2D474K | .24 | .33 | .78 | DW2E474K | .28 | .45 | 1.17 | DW2G474K | .48 | .65 | 1.45 | DW2J474K | |
| .56 | | .19 | .28 | .53 | DW2D564K | .26 | .36 | .78 | DW2E564K | .31 | .48 | 1.17 | DW2G564K | .47 | .63 | 1.68 | DW2J564K | |
| .68 | | .22 | .31 | .53 | DW2D684K | .29 | .39 | .78 | DW2E684K | .35 | .52 | 1.17 | DW2G684K | .47 | .64 | 1.90 | DW2J684K | |
| .82 | | .18 | .27 | .65 | DW2D824K | .33 | .42 | .78 | DW2E824K | .39 | .56 | 1.17 | DW2G824K | .53 | .70 | 1.90 | DW2J824K | |
| 1.0 | | .20 | .29 | .65 | DW2D105K | .32 | .41 | .95 | DW2E105K | .44 | .61 | 1.17 | DW2G105K | .59 | .76 | 1.90 | DW2J105K | |
| 1.2 | | .22 | .32 | .65 | DW2D125K | .25 | .42 | 1.17 | DW2E125K | .42 | .59 | 1.45 | DW2G125K | .66 | .82 | 1.90 | DW2J125K | |
| 1.5 | | .21 | .30 | .78 | DW2D155K | .29 | .45 | 1.17 | DW2E155K | .48 | .65 | 1.45 | DW2G155K | .75 | .91 | 1.90 | DW2J155K | |
| 1.8 | | .24 | .36 | .78 | DW2D185K | .32 | .49 | 1.17 | DW2E185K | .47 | .64 | 1.68 | DW2G185K | | | | | |
| 2.0 | | .28 | .37 | .78 | DW2D205K | .38 | .52 | 1.17 | DW2E205K | .45 | .62 | 1.90 | DW2G205K | | | | | |
| 3.0 | | .34 | .44 | .78 | DW2D305K | .44 | .61 | 1.17 | DW2E305K | .57 | .74 | 1.90 | DW2G305K | | | | | |
| 4.0 | | .32 | .46 | .95 | DW2D405K | .44 | .61 | 1.45 | DW2E405K | .68 | .84 | 1.90 | DW2G405K | | | | | |
| 5.0 | | .28 | .44 | 1.17 | DW2D505K | .45 | .61 | 1.68 | DW2E505K | .77 | .93 | 1.90 | DW2G505K | | | | | |
| 6.0 | | .33 | .49 | 1.17 | DW2D605K | .52 | .69 | 1.68 | DW2E605K | | | | | | | | | |
| 8.0 | | .35 | .51 | 1.17 | DW2D805K | .53 | .70 | 1.90 | DW2E805K | | | | | | | | | |
| 10.0 | | .46 | .63 | 1.17 | DW2D106K | .70 | .87 | 1.90 | DW2E106K | | | | | | | | | |
| 12.0 | | .51 | .68 | 1.17 | DW2D126K | .78 | .95 | 1.90 | DW2E126K | | | | | | | | | |
| 15.0 | | .50 | .67 | 1.45 | DW2D156K | .87 | 1.04 | 1.90 | DW2E156K | | | | | | | | | |
| 18.0 | | .56 | .72 | 1.45 | DW2D186K | .95 | 1.12 | 1.90 | DW2E186K | | | | | | | | | |
| 20.0 | | .52 | .68 | 1.68 | DW2D206K | 1.01 | 1.18 | 1.90 | DW2E206K | | | | | | | | | |
| 30.0 | | .59 | .75 | 1.90 | DW2D306K | | | | | | | | | | | | | |
| 40.0 | | .72 | .88 | 1.90 | DW2D406K | | | | | | | | | | | | | |
| 50.0 | | .79 | .95 | 1.90 | DW2D506K | | | | | | | | | | | | | |

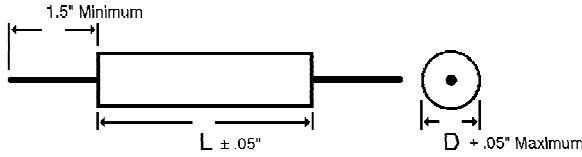
Note: Replace the last digit **K** with the desired tolerance code from the tolerance table. For an in-between value use the next larger value's dimensions. Custom sizes are readily available. All dimensions are in inches. All +.05" dimension tolerances are Maximum.

METALLIZED MYLAR WRAP AND FILL, ROUND AXIAL LEAD CAPACITORS



DR2
METALLIZED MYLAR
WRAP & FILL, ROUND
MINIATURE SERIES

DIMENSIONS See tables for specific D, L values.



WIRE SIZE (Length 1.5" Minimum)

| BODY LENGTH (L) | WIRE SIZE | |
|-----------------|-----------|----------|
| | AWG No. | Diameter |
| ≤ 0.65" | 24 | 0.020" |
| > 0.65" ≤ 1.00" | 22 | 0.025" |
| > 1.00" | 20 | 0.032" |

For UL 510 Flame Retardant Tape add -R to the end of Part Number.

SELECTION AND ORDERING TABLES Select voltage rating, capacitance and tolerance, read Part Number to the right.

| MFD | 100VDC 40VAC | | | 200VDC 100VAC | | | 400VDC 160VAC | | | 600VDC 230VAC | | |
|-------|--------------|-------------|-------------|---------------|-------------|-------------|---------------|-------------|-------------|---------------|-------------|-------------|
| | RATING | D + .05" | L ± .05" | PART # | D + .05" | L ± .05" | PART # | D + .05" | L ± .05" | PART # | D + .05" | L ± .05" |
| .001 | .15 | .40 | DR2D102K | .15 | .40 | DR2E102K | .15 | .40 | DR2G102K | .15 | .40 | DR2J102K |
| .0012 | .15 | .40 | DR2D122K | .15 | .40 | DR2E122K | .15 | .40 | DR2G122K | .15 | .40 | DR2J122K |
| .0018 | .15 | .40 | DR2D182K | .15 | .40 | DR2E182K | .15 | .40 | DR2G182K | .15 | .40 | DR2J182K |
| .0022 | .15 | .40 | DR2D222K | .15 | .40 | DR2E222K | .15 | .40 | DR2G222K | .15 | .40 | DR2J222K |
| .0027 | .15 | .40 | DR2D272K | .15 | .40 | DR2E272K | .15 | .40 | DR2G272K | .16 | .40 | DR2J272K |
| .0033 | .15 | .40 | DR2D332K | .15 | .40 | DR2E332K | .15 | .40 | DR2G332K | .15 | .53 | DR2J332K |
| .0047 | .15 | .40 | DR2D472K | .15 | .40 | DR2E472K | .15 | .40 | DR2G472K | .15 | .53 | DR2J472K |
| .0056 | .15 | .40 | DR2D562K | .15 | .40 | DR2E562K | .16 | .40 | DR2G562K | .15 | .53 | DR2J562K |
| .0068 | .15 | .40 | DR2D682K | .15 | .40 | DR2E682K | .17 | .40 | DR2G682K | .17 | .53 | DR2J682K |
| .0082 | .15 | .40 | DR2D822K | .15 | .40 | DR2E822K | .15 | .53 | DR2G822K | .18 | .53 | DR2J822K |
| .01 | .15 | .40 | DR2D103K | .15 | .40 | DR2E103K | .15 | .53 | DR2G103K | .20 | .53 | DR2J103K |
| .012 | .15 | .40 | DR2D123K | .15 | .40 | DR2E123K | .15 | .53 | DR2G123K | .21 | .53 | DR2J123K |
| .015 | .15 | .40 | DR2D153K | .15 | .40 | DR2E153K | .15 | .53 | DR2G153K | .24 | .53 | DR2J153K |
| .018 | .15 | .40 | DR2D183K | .16 | .40 | DR2E183K | .17 | .53 | DR2G183K | .26 | .53 | DR2J183K |
| .022 | .15 | .40 | DR2D223K | .15 | .53 | DR2E223K | .18 | .53 | DR2G223K | .28 | .53 | DR2J223K |
| .027 | .15 | .40 | DR2D273K | .15 | .53 | DR2E273K | .20 | .53 | DR2G273K | .26 | .65 | DR2J273K |
| .033 | .15 | .40 | DR2D333K | .15 | .53 | DR2E333K | .22 | .53 | DR2G333K | .28 | .65 | DR2J333K |
| .039 | .15 | .40 | DR2D393K | .15 | .53 | DR2E393K | .23 | .53 | DR2G393K | .26 | .78 | DR2J393K |
| .047 | .15 | .40 | DR2D473K | .15 | .53 | DR2E473K | .25 | .53 | DR2G473K | .28 | .78 | DR2J473K |
| .056 | .15 | .40 | DR2D563K | .17 | .53 | DR2E563K | .28 | .53 | DR2G563K | .31 | .78 | DR2J563K |
| .068 | .16 | .40 | DR2D683K | .18 | .53 | DR2E683K | .24 | .65 | DR2G683K | .34 | .78 | DR2J683K |
| .082 | .17 | .40 | DR2D823K | .20 | .53 | DR2E823K | .26 | .65 | DR2G823K | .37 | .78 | DR2J823K |
| .10 | .15 | .53 | DR2D104K | .22 | .53 | DR2E104K | .28 | .65 | DR2G104K | .37 | .95 | DR2J104K |
| .12 | .15 | .53 | DR2D124K | .23 | .53 | DR2E124K | .26 | .78 | DR2G124K | .35 | 1.17 | DR2J124K |
| .15 | .15 | .53 | DR2D154K | .26 | .53 | DR2E154K | .29 | .78 | DR2G154K | .38 | 1.17 | DR2J154K |
| .18 | .15 | .53 | DR2D184K | .28 | .53 | DR2E184K | .32 | .78 | DR2G184K | .42 | 1.17 | DR2J184K |
| .22 | .16 | .53 | DR2D224K | .24 | .65 | DR2E224K | .35 | .78 | DR2G224K | .46 | 1.17 | DR2J224K |
| .27 | .18 | .53 | DR2D274K | .26 | .65 | DR2E274K | .39 | .78 | DR2G274K | .51 | 1.17 | DR2J274K |
| .33 | .20 | .53 | DR2D334K | .30 | .65 | DR2E334K | .38 | .95 | DR2G334K | .55 | 1.17 | DR2J334K |
| .39 | .21 | .53 | DR2D394K | .27 | .78 | DR2E394K | .36 | 1.17 | DR2G394K | .53 | 1.45 | DR2J394K |
| .47 | .23 | .53 | DR2D474K | .30 | .78 | DR2E474K | .39 | 1.17 | DR2G474K | .59 | 1.45 | DR2J474K |
| .56 | .25 | .53 | DR2D564K | .32 | .78 | DR2E564K | .42 | 1.17 | DR2G564K | .57 | 1.68 | DR2J564K |
| .68 | .28 | .53 | DR2D684K | .35 | .78 | DR2E684K | .46 | 1.17 | DR2G684K | .58 | 1.90 | DR2J684K |
| .82 | .24 | .65 | DR2D824K | .39 | .78 | DR2E824K | .50 | 1.17 | DR2G824K | .64 | 1.90 | DR2J824K |
| 1.0 | .26 | .65 | DR2D105K | .38 | .95 | DR2E105K | .55 | 1.17 | DR2G105K | | | |
| 1.2 | .28 | .65 | DR2D125K | .36 | 1.17 | DR2E125K | .53 | 1.45 | DR2G125K | | | |
| 1.5 | .27 | .78 | DR2D155K | .39 | 1.17 | DR2E155K | .59 | 1.45 | DR2G155K | | | |
| 1.8 | .29 | .78 | DR2D185K | .43 | 1.17 | DR2E185K | .58 | 1.68 | DR2G185K | | | |
| 2.0 | .34 | .78 | DR2D205K | .45 | 1.17 | DR2E205K | .56 | 1.90 | DR2G205K | | | |
| 3.0 | .41 | .78 | DR2D305K | .55 | 1.17 | DR2E305K | .68 | 1.90 | DR2G305K | | | |
| 4.0 | .38 | .95 | DR2D405K | .55 | 1.45 | DR2E405K | .78 | 1.90 | DR2G405K | | | |
| 5.0 | .36 | 1.17 | DR2D505K | .55 | 1.68 | DR2E505K | .87 | 1.90 | DR2G505K | | | |
| 6.0 | .39 | 1.17 | DR2D605K | .59 | 1.68 | DR2E605K | | | | | | |
| 8.0 | .45 | 1.17 | DR2D805K | .64 | 1.90 | DR2E805K | | | | | | |
| 10.0 | .57 | 1.17 | DR2D106K | .81 | 1.90 | DR2E106K | | | | | | |
| 12.0 | .62 | 1.17 | DR2D126K | .89 | 1.90 | DR2E126K | | | | | | |
| 15.0 | .61 | 1.45 | DR2D156K | .98 | 1.90 | DR2E156K | | | | | | |
| 18.0 | .66 | 1.45 | DR2D186K | 1.06 | 1.90 | DR2E186K | | | | | | |
| 20.0 | .63 | 1.68 | DR2D206K | 1.12 | 1.90 | DR2E206K | | | | | | |
| 30.0 | .70 | 1.90 | DR2D306K | | | | | | | | | |
| 40.0 | .83 | 1.90 | DR2D406K | | | | | | | | | |
| 50.0 | .90 | 1.90 | DR2D506K | | | | | | | | | |

TOLERANCE TABLE

| Code | Tolerance |
|------|-----------|
| A | ± 0.1% ♦ |
| B | ± 0.25% ♦ |
| D | ± 0.5% ♦ |
| F | ± 1% ♦ |
| G | ± 2% ♦ |
| H | ± 3% ♦ |
| J | ± 5% |
| K | ± 10% |
| M | ± 20% |
| N | ± 30% |
| P | GMV |
| S | -10% +30% |
| T | -10% +50% |
| V | -10% +20% |
| X | Special |

♦ Temperature Stabilized

Note: Replace the last digit **K** with the desired tolerance code from the tolerance table. For an in-between value use the next larger value's dimensions. Custom sizes are readily available. All dimensions are in inches. All +.05" dimension tolerances are Maximum.

METALLIZED MYLAR WRAP AND FILL, ROUND AXIAL LEAD CAPACITORS



DR3
METALLIZED MYLAR
WRAP & FILL, ROUND
REGULAR SERIES

ORDERING DESCRIPTION

Capacitor, fixed: Metallized Mylar dielectric; extended foil construction; tin-plated copper-clad steel wire axial leads; encased in skin-tight plastic wrap with epoxy end fill. In addition to the standard Tape, New Flame Retardant Tape is available meeting UL 510 Flame Retardant Specifications.

APPLICATION NOTES

Wrap & Fill capacitors are not intended for exposure to high humidity conditions over extended periods of time. For stringent environmental conditions, Wrap & Fill capacitors should be used in encapsulated or hermetically sealed circuitry. For UL 510 Flame Retardant Tape add -R to the end of the Part Number.

SELECTION AND ORDERING TABLES

Select voltage rating, capacitance and tolerance, read Part Number to the right.

| MFD | 35VDC 20VAC | | | 50VDC 40VAC | | | 100VDC 70VAC | | | 200VDC 120VAC | | | |
|-------|-------------|--------|----------|-------------|--------|----------|--------------|--------|----------|---------------|--------|----------|--------|
| | RATING | D | L | PART # | D | L | PART # | D | L | PART # | D | L | PART # |
| | + .05" | ± .05" | | + .05" | ± .05" | | + .05" | ± .05" | | + .05" | ± .05" | | |
| .001 | .15 | .40 | DR3S102K | .15 | .40 | DR3C102K | .15 | .40 | DR3D102K | .15 | .40 | DR3E102K | |
| .0027 | .15 | .40 | DR3S272K | .15 | .40 | DR3C272K | .15 | .40 | DR3D272K | .15 | .40 | DR3E272K | |
| .0033 | .15 | .40 | DR3S332K | .15 | .40 | DR3C332K | .15 | .40 | DR3D332K | .15 | .40 | DR3E332K | |
| .0056 | .15 | .40 | DR3S562K | .15 | .40 | DR3C562K | .15 | .40 | DR3D562K | .15 | .40 | DR3E562K | |
| .0068 | .15 | .40 | DR3S682K | .15 | .40 | DR3C682K | .15 | .40 | DR3D682K | .15 | .40 | DR3E682K | |
| .0082 | .15 | .40 | DR3S822K | .15 | .40 | DR3C822K | .15 | .40 | DR3D822K | .15 | .40 | DR3E822K | |
| .01 | .15 | .40 | DR3S103K | .15 | .40 | DR3C103K | .15 | .40 | DR3D103K | .16 | .40 | DR3E103K | |
| .012 | .15 | .40 | DR3S123K | .15 | .40 | DR3C123K | .15 | .40 | DR3D123K | .16 | .40 | DR3E123K | |
| .015 | .15 | .40 | DR3S153K | .15 | .40 | DR3C153K | .15 | .40 | DR3D153K | .16 | .40 | DR3E153K | |
| .018 | .15 | .40 | DR3S183K | .15 | .40 | DR3C183K | .15 | .40 | DR3D183K | .17 | .40 | DR3E183K | |
| .022 | .15 | .40 | DR3S223K | .15 | .40 | DR3C223K | .15 | .40 | DR3D223K | .18 | .40 | DR3E223K | |
| .027 | .15 | .40 | DR3S273K | .15 | .40 | DR3C273K | .15 | .40 | DR3D273K | .21 | .40 | DR3E273K | |
| .033 | .15 | .40 | DR3S333K | .15 | .40 | DR3C333K | .16 | .40 | DR3D333K | .22 | .40 | DR3E333K | |
| .039 | .15 | .40 | DR3S393K | .15 | .40 | DR3C393K | .19 | .40 | DR3D393K | .23 | .40 | DR3E393K | |
| .047 | .15 | .40 | DR3S473K | .15 | .40 | DR3C473K | .20 | .40 | DR3D473K | .24 | .40 | DR3E473K | |
| .056 | .15 | .40 | DR3S563K | .15 | .40 | DR3C563K | .22 | .40 | DR3D563K | .25 | .53 | DR3E563K | |
| .068 | .15 | .40 | DR3S683K | .16 | .40 | DR3C683K | .23 | .40 | DR3D683K | .26 | .53 | DR3E683K | |
| .082 | .15 | .40 | DR3S823K | .17 | .40 | DR3C823K | .18 | .53 | DR3D823K | .27 | .53 | DR3E823K | |
| .10 | .15 | .40 | DR3S104K | .20 | .40 | DR3C104K | .20 | .53 | DR3D104K | .31 | .53 | DR3E104K | |
| .12 | .15 | .40 | DR3S124K | .21 | .40 | DR3C124K | .22 | .53 | DR3D124K | .32 | .53 | DR3E124K | |
| .15 | .15 | .40 | DR3S154K | .17 | .53 | DR3C154K | .24 | .53 | DR3D154K | .30 | .65 | DR3E154K | |
| .18 | .16 | .40 | DR3S184K | .18 | .53 | DR3C184K | .26 | .53 | DR3D184K | .33 | .65 | DR3E184K | |
| .22 | .17 | .40 | DR3S224K | .19 | .53 | DR3C224K | .28 | .53 | DR3D224K | .34 | .65 | DR3E224K | |
| .25 | .18 | .40 | DR3S254K | .20 | .53 | DR3C254K | .25 | .65 | DR3D254K | .33 | .78 | DR3E254K | |
| .27 | .19 | .40 | DR3S274K | .22 | .53 | DR3C274K | .26 | .65 | DR3D274K | .34 | .78 | DR3E274K | |
| .33 | .21 | .40 | DR3S334K | .23 | .53 | DR3C334K | .28 | .65 | DR3D334K | .37 | .78 | DR3E334K | |
| .39 | .22 | .40 | DR3S394K | .24 | .53 | DR3C394K | .26 | .78 | DR3D394K | .39 | .78 | DR3E394K | |
| .47 | .24 | .40 | DR3S474K | .26 | .53 | DR3C474K | .28 | .78 | DR3D474K | .41 | .78 | DR3E474K | |
| .50 | .18 | .53 | DR3S504K | .27 | .53 | DR3C504K | .29 | .78 | DR3D504K | .42 | .78 | DR3E504K | |
| .56 | .18 | .53 | DR3S564K | .28 | .53 | DR3C564K | .30 | .78 | DR3D564K | .40 | .97 | DR3E564K | |
| .68 | .19 | .53 | DR3S684K | .31 | .53 | DR3C684K | .32 | .78 | DR3D684K | .42 | .97 | DR3E684K | |
| .75 | .20 | .53 | DR3S754K | .32 | .53 | DR3C754K | .35 | .78 | DR3D754K | .44 | .97 | DR3E754K | |
| .82 | .20 | .53 | DR3S824K | .28 | .65 | DR3C824K | .36 | .78 | DR3D824K | .42 | 1.17 | DR3E824K | |
| 1.0 | .23 | .53 | DR3S105K | .30 | .65 | DR3C105K | .34 | .97 | DR3D105K | .45 | 1.17 | DR3E105K | |
| 1.2 | .25 | .53 | DR3S125K | .27 | .78 | DR3C125K | .36 | .97 | DR3D125K | .40 | 1.68 | DR3E125K | |
| 1.5 | .28 | .53 | DR3S155K | .30 | .78 | DR3C155K | .40 | .97 | DR3D155K | .43 | 1.68 | DR3E155K | |
| 1.8 | .30 | .53 | DR3S185K | .36 | .78 | DR3C185K | .44 | .97 | DR3D185K | .47 | 1.68 | DR3E185K | |
| 2.0 | .31 | .53 | DR3S205K | .37 | .78 | DR3C205K | .45 | .97 | DR3D205K | .49 | 1.68 | DR3E205K | |
| 3.0 | .30 | .65 | DR3S305K | .37 | .97 | DR3C305K | .48 | 1.17 | DR3D305K | .59 | 1.68 | DR3E305K | |
| 4.0 | .30 | .78 | DR3S405K | .42 | 1.17 | DR3C405K | .45 | 1.68 | DR3D405K | .70 | 1.68 | DR3E405K | |
| 5.0 | .34 | .78 | DR3S505K | .45 | 1.17 | DR3C505K | .49 | 1.68 | DR3D505K | .76 | 1.68 | DR3E505K | |
| 6.0 | .37 | .78 | DR3S605K | .48 | 1.17 | DR3C605K | .51 | 2.00 | DR3D605K | .82 | 1.68 | DR3E605K | |
| 8.0 | .38 | .97 | DR3S805K | .55 | 1.17 | DR3C805K | .56 | 2.00 | DR3D805K | .91 | 1.68 | DR3E805K | |
| 10.0 | .43 | .97 | DR3S106K | .61 | 1.17 | DR3C106K | .62 | 2.00 | DR3D106K | .99 | 1.68 | DR3E106K | |
| 12.0 | .36 | 1.17 | DR3S126K | .73 | 1.17 | DR3C126K | .67 | 2.00 | DR3D126K | .99 | 2.25 | DR3E126K | |
| 15.0 | .41 | 1.17 | DR3S156K | .58 | 1.68 | DR3C156K | .72 | 2.00 | DR3D156K | 1.07 | 2.25 | DR3E156K | |
| 20.0 | .46 | 1.17 | DR3S206K | .69 | 1.68 | DR3C206K | .83 | 2.00 | DR3D206K | 1.23 | 2.25 | DR3E206K | |
| 30.0 | .58 | 1.17 | DR3S306K | .80 | 1.68 | DR3C306K | .98 | 2.00 | DR3D306K | 1.47 | 2.25 | DR3E306K | |
| 40.0 | .67 | 1.17 | DR3S406K | .89 | 1.68 | DR3C406K | 1.10 | 2.00 | DR3D406K | 1.44 | 3.25 | DR3E406K | |
| 50.0 | .76 | 1.45 | DR3S506K | .98 | 1.68 | DR3C506K | 1.22 | 2.00 | DR3D506K | 1.57 | 3.25 | DR3E506K | |
| 75.0 | .83 | 1.68 | DR3S756K | 1.15 | 1.68 | DR3C756K | 1.48 | 2.00 | DR3D756K | 1.89 | 3.25 | DR3E756K | |
| 100.0 | .81 | 2.25 | DR3S107K | 1.32 | 1.68 | DR3C107K | 1.70 | 2.00 | DR3D107K | 2.15 | 3.25 | DR3E107K | |

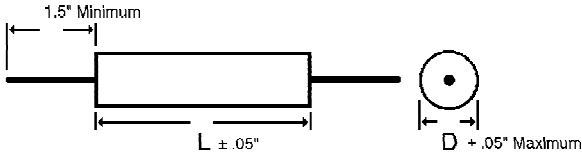
Note: Replace the last digit **K** with the desired tolerance code from the tolerance table. For an in-between value use the next larger value's dimensions. Custom sizes are readily available. All dimensions are in inches. All +.05" dimension tolerances are Maximum.

METALLIZED MYLAR WRAP AND FILL, ROUND AXIAL LEAD CAPACITORS



DR3
METALLIZED MYLAR
WRAP & FILL, ROUND
REGULAR SERIES

DIMENSIONS See tables for specific D, L values.



WIRE SIZE (Length 1.5" Minimum)

| BODY LENGTH (L) | WIRE SIZE | |
|-----------------|-----------|----------|
| | AWG No. | Diameter |
| ≤ 0.65" | 24 | 0.020" |
| > 0.65" ≤ 1.00" | 22 | 0.025" |
| > 1.00" | 20 | 0.032" |

For UL 510 Flame Retardant Tape add -R to the end of Part Number.

SELECTION AND ORDERING TABLES Select voltage rating, capacitance and tolerance, read Part Number to the right.

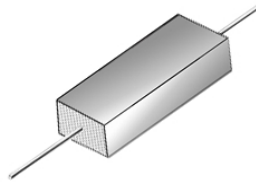
| MFD | 400VDC 160VAC | | | 600VDC 230VAC | | | 1000VDC 360VAC | | | 2000VDC 700VAC | | | |
|-------|---------------|--------|----------|---------------|--------|----------|----------------|--------|----------|----------------|--------|----------|--------|
| | RATING | D | L | PART # | D | L | PART # | D | L | PART # | D | L | PART # |
| | + .05" | ± .05" | | + .05" | ± .05" | | + .05" | ± .05" | | + .05" | ± .05" | | |
| .001 | .15 | .40 | DR3G102K | .15 | .40 | DR3J102K | .20 | .97 | DR3M102K | .20 | .97 | DR3R102K | |
| .0012 | .15 | .40 | DR3G122K | .15 | .40 | DR3J122K | .20 | .97 | DR3M122K | .20 | .97 | DR3R122K | |
| .0015 | .15 | .40 | DR3G152K | .15 | .40 | DR3J152K | .20 | .97 | DR3M152K | .20 | .97 | DR3R152K | |
| .0018 | .15 | .40 | DR3G182K | .15 | .40 | DR3J182K | .20 | .97 | DR3M182K | .20 | .97 | DR3R182K | |
| .0022 | .15 | .40 | DR3G222K | .15 | .40 | DR3J222K | .21 | .97 | DR3M222K | .22 | .97 | DR3R222K | |
| .0027 | .15 | .40 | DR3G272K | .15 | .40 | DR3J272K | .21 | .97 | DR3M272K | .23 | .97 | DR3R272K | |
| .0033 | .15 | .40 | DR3G332K | .15 | .40 | DR3J332K | .21 | .97 | DR3M332K | .25 | .97 | DR3R332K | |
| .0039 | .15 | .40 | DR3G392K | .15 | .40 | DR3J392K | .21 | .97 | DR3M392K | .27 | .97 | DR3R392K | |
| .0047 | .15 | .40 | DR3G472K | .15 | .40 | DR3J472K | .22 | .97 | DR3M472K | .29 | .97 | DR3R472K | |
| .0056 | .15 | .40 | DR3G562K | .16 | .40 | DR3J562K | .22 | .97 | DR3M562K | .31 | .97 | DR3R562K | |
| .0068 | .15 | .40 | DR3G682K | .17 | .40 | DR3J682K | .22 | .97 | DR3M682K | .34 | .97 | DR3R682K | |
| .0082 | .15 | .40 | DR3G822K | .19 | .40 | DR3J822K | .22 | .97 | DR3M822K | .36 | .97 | DR3R822K | |
| .01 | .21 | .53 | DR3G103K | .20 | .53 | DR3J103K | .23 | .97 | DR3M103K | .40 | .97 | DR3R103K | |
| .012 | .20 | .53 | DR3G123K | .21 | .53 | DR3J123K | .25 | .97 | DR3M123K | .43 | .97 | DR3R123K | |
| .015 | .21 | .53 | DR3G153K | .25 | .53 | DR3J153K | .27 | .97 | DR3M153K | .47 | .97 | DR3R153K | |
| .018 | .21 | .53 | DR3G183K | .27 | .53 | DR3J183K | .30 | .97 | DR3M183K | .51 | .97 | DR3R183K | |
| .022 | .21 | .53 | DR3G223K | .29 | .53 | DR3J223K | .31 | .97 | DR3M223K | .43 | 1.31 | DR3R223K | |
| .027 | .23 | .53 | DR3G273K | .32 | .53 | DR3J273K | .34 | .97 | DR3M273K | .47 | 1.31 | DR3R273K | |
| .033 | .24 | .53 | DR3G333K | .28 | .65 | DR3J333K | .37 | .97 | DR3M333K | .51 | 1.31 | DR3R333K | |
| .039 | .27 | .53 | DR3G393K | .30 | .65 | DR3J393K | .40 | .97 | DR3M393K | .55 | 1.31 | DR3R393K | |
| .047 | .28 | .53 | DR3G473K | .34 | .65 | DR3J473K | .43 | .97 | DR3M473K | .59 | 1.31 | DR3R473K | |
| .056 | .29 | .53 | DR3G563K | .31 | .78 | DR3J563K | .46 | .97 | DR3M563K | .63 | 1.31 | DR3R563K | |
| .068 | .30 | .53 | DR3G683K | .34 | .78 | DR3J683K | .50 | .97 | DR3M683K | .69 | 1.31 | DR3R683K | |
| .082 | .31 | .65 | DR3G823K | .36 | .78 | DR3J823K | .42 | 1.31 | DR3M823K | .62 | 1.68 | DR3R823K | |
| .10 | .31 | .65 | DR3G104K | .39 | .78 | DR3J104K | .45 | 1.31 | DR3M104K | .67 | 1.68 | DR3R104K | |
| .12 | .29 | .78 | DR3G124K | .42 | .78 | DR3J124K | .49 | 1.31 | DR3M124K | .74 | 1.68 | DR3R124K | |
| .15 | .32 | .78 | DR3G154K | .41 | .97 | DR3J154K | .53 | 1.31 | DR3M154K | .82 | 1.68 | DR3R154K | |
| .18 | .35 | .78 | DR3G184K | .44 | .97 | DR3J184K | .57 | 1.31 | DR3M184K | .88 | 1.68 | DR3R184K | |
| .22 | .37 | .78 | DR3G224K | .42 | 1.17 | DR3J224K | .62 | 1.31 | DR3M224K | .98 | 1.68 | DR3R224K | |
| .25 | .39 | .78 | DR3G254K | .45 | 1.17 | DR3J254K | .66 | 1.31 | DR3M254K | 1.04 | 1.68 | DR3R254K | |
| .27 | .41 | .78 | DR3G274K | .47 | 1.17 | DR3J274K | .68 | 1.31 | DR3M274K | 1.08 | 1.68 | DR3R274K | |
| .33 | .38 | .97 | DR3G334K | .53 | 1.17 | DR3J334K | .62 | 1.68 | DR3M334K | 1.21 | 1.68 | DR3R334K | |
| .39 | .37 | 1.17 | DR3G394K | .56 | 1.17 | DR3J394K | .66 | 1.68 | DR3M394K | 1.01 | 2.50 | DR3R394K | |
| .47 | .41 | 1.17 | DR3G474K | .61 | 1.17 | DR3J474K | .72 | 1.68 | DR3M474K | 1.11 | 2.50 | DR3R474K | |
| .50 | .43 | 1.17 | DR3G504K | .63 | 1.17 | DR3J504K | .74 | 1.68 | DR3M504K | | | | |
| .56 | .44 | 1.17 | DR3G564K | .54 | 1.68 | DR3J564K | .79 | 1.68 | DR3M564K | | | | |
| .68 | .48 | 1.17 | DR3G684K | .58 | 1.68 | DR3J684K | .85 | 1.68 | DR3M684K | | | | |
| .75 | .50 | 1.17 | DR3G754K | .61 | 1.68 | DR3J754K | .89 | 1.68 | DR3M754K | | | | |
| .82 | .52 | 1.17 | DR3G824K | .64 | 1.68 | DR3J824K | .93 | 1.68 | DR3M824K | | | | |
| 1.0 | .58 | 1.17 | DR3G105K | .70 | 1.68 | DR3J105K | 1.03 | 1.68 | DR3M105K | | | | |
| 1.2 | .52 | 1.68 | DR3G125K | .77 | 1.68 | DR3J125K | .86 | 2.50 | DR3M125K | | | | |
| 1.5 | .57 | 1.68 | DR3G155K | .84 | 1.68 | DR3J155K | .96 | 2.50 | DR3M155K | | | | |
| 1.8 | .63 | 1.68 | DR3G185K | .91 | 1.68 | DR3J185K | 1.05 | 2.50 | DR3M185K | | | | |
| 2.0 | .66 | 1.68 | DR3G205K | .95 | 1.68 | DR3J205K | 1.09 | 2.50 | DR3M205K | | | | |
| 3.0 | .80 | 1.68 | DR3G305K | 1.14 | 1.68 | DR3J305K | 1.32 | 2.50 | DR3M305K | | | | |
| 4.0 | .91 | 1.68 | DR3G405K | 1.14 | 2.25 | DR3J405K | 1.52 | 2.50 | DR3M405K | | | | |
| 5.0 | .99 | 1.68 | DR3G505K | 1.25 | 2.25 | DR3J505K | 1.69 | 2.50 | DR3M505K | | | | |
| 6.0 | .90 | 2.25 | DR3G605K | 1.40 | 2.25 | DR3J605K | 1.85 | 2.50 | DR3M605K | | | | |
| 8.0 | 1.02 | 2.25 | DR3G805K | 1.58 | 2.25 | DR3J805K | 1.86 | 3.25 | DR3M805K | | | | |
| 10.0 | 1.23 | 2.25 | DR3G106K | 1.74 | 2.25 | DR3J106K | 2.06 | 3.25 | DR3M106K | | | | |
| 12.0 | 1.33 | 2.25 | DR3G126K | 1.88 | 2.25 | DR3J126K | 2.24 | 3.25 | DR3M126K | | | | |
| 15.0 | 1.46 | 2.25 | DR3G156K | 2.08 | 2.25 | DR3J156K | 2.49 | 3.25 | DR3M156K | | | | |

TOLERANCE TABLE

| Code | Tolerance |
|------|------------------------|
| A | ± 0.1% ♦ |
| B | ± 0.25% ♦ |
| D | ± 0.5% ♦ |
| F | ± 1% ♦ |
| G | ± 2% ♦ |
| H | ± 3% ♦ |
| J | ± 5% |
| K | ± 10% |
| M | ± 20% |
| N | ± 30% |
| P | GMV |
| S | -10% +30% |
| T | -10% +50% |
| V | -10% +20% |
| X | Special |
| ♦ | Temperature Stabilized |

Note: Replace the last digit **K** with the desired tolerance code from the tolerance table. For an in-between value use the next larger value's dimensions. Custom sizes are readily available. All dimensions are in inches. All +.05" dimension tolerances are Maximum.

METALLIZED MYLAR EPOXY CASE, AXIAL LEAD, RECTANGULAR CAPACITORS



DE3
METALLIZED MYLAR
EPOXY CASE, AXIAL, RECT.
REGULAR SERIES

ORDERING DESCRIPTION

Capacitor, fixed: Metallized Mylar dielectric; extended foil construction; tin-plated copper-clad steel wire axial leads; encased in a molded epoxy/plastic shell with epoxy fill.

APPLICATION NOTES

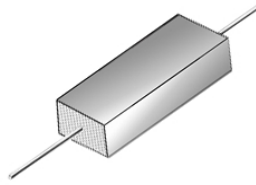
Epoxy Case capacitors are not intended for exposure to high humidity conditions over extended periods of time. For stringent environmental conditions, Epoxy Case capacitors should be used in encapsulated or hermetically sealed circuitry.

SELECTION AND ORDERING TABLES Select voltage rating, capacitance and tolerance, read Part Number to the right.

| MFD | 35VDC 20VAC | | | | 50VDC 40VAC | | | | 100VDC 70VAC | | | | 200VDC 120VAC | | | | | | | | | | | |
|-------|-------------|--------|--------|----------|-------------|--------|--------|----------|--------------|--------|--------|----------|---------------|--------|--------|----------|--------|--------|--------|--|--------|--------|--------|--|
| | T | | W | | L | | PART # | | T | | W | | L | | PART # | | T | | W | | L | | PART # | |
| | ± .01" | ± .01" | ± .03" | | ± .01" | ± .01" | ± .03" | | ± .01" | ± .01" | ± .03" | | ± .01" | ± .01" | ± .03" | | ± .01" | ± .01" | ± .03" | | ± .01" | ± .01" | ± .03" | |
| .001 | .17 | .29 | .42 | DE3S102K | .17 | .29 | .42 | DE3C102K | .17 | .29 | .42 | DE3D102K | .17 | .29 | .42 | DE3E102K | | | | | | | | |
| .0027 | .17 | .29 | .42 | DE3S272K | .17 | .29 | .42 | DE3C272K | .17 | .29 | .42 | DE3D272K | .17 | .29 | .42 | DE3E272K | | | | | | | | |
| .0033 | .17 | .29 | .42 | DE3S332K | .17 | .29 | .42 | DE3C332K | .17 | .29 | .42 | DE3D332K | .17 | .29 | .42 | DE3E332K | | | | | | | | |
| .0056 | .17 | .29 | .42 | DE3S562K | .17 | .29 | .42 | DE3C562K | .17 | .29 | .42 | DE3D562K | .17 | .29 | .42 | DE3E562K | | | | | | | | |
| .0068 | .17 | .29 | .42 | DE3S682K | .17 | .29 | .42 | DE3C682K | .17 | .29 | .42 | DE3D682K | .17 | .29 | .42 | DE3E682K | | | | | | | | |
| .0082 | .17 | .29 | .42 | DE3S822K | .17 | .29 | .42 | DE3C822K | .17 | .29 | .42 | DE3D822K | .17 | .29 | .42 | DE3E822K | | | | | | | | |
| .01 | .17 | .29 | .42 | DE3S103K | .17 | .29 | .42 | DE3C103K | .17 | .29 | .42 | DE3D103K | .17 | .29 | .42 | DE3E103K | | | | | | | | |
| .012 | .17 | .29 | .42 | DE3S123K | .17 | .29 | .42 | DE3C123K | .17 | .29 | .42 | DE3D123K | .17 | .29 | .42 | DE3E123K | | | | | | | | |
| .015 | .17 | .29 | .42 | DE3S153K | .17 | .29 | .42 | DE3C153K | .17 | .29 | .42 | DE3D153K | .17 | .29 | .42 | DE3E153K | | | | | | | | |
| .018 | .17 | .29 | .42 | DE3S183K | .17 | .29 | .42 | DE3C183K | .17 | .29 | .42 | DE3D183K | .17 | .29 | .42 | DE3E183K | | | | | | | | |
| .022 | .17 | .29 | .42 | DE3S223K | .17 | .29 | .42 | DE3C223K | .17 | .29 | .42 | DE3D223K | .17 | .29 | .42 | DE3E223K | | | | | | | | |
| .027 | .17 | .29 | .42 | DE3S273K | .17 | .29 | .42 | DE3C273K | .17 | .29 | .42 | DE3D273K | .17 | .29 | .57 | DE3E273K | | | | | | | | |
| .033 | .17 | .29 | .42 | DE3S333K | .17 | .29 | .42 | DE3C333K | .17 | .29 | .42 | DE3D333K | .17 | .29 | .57 | DE3E333K | | | | | | | | |
| .039 | .17 | .29 | .42 | DE3S393K | .17 | .29 | .42 | DE3C393K | .17 | .29 | .42 | DE3D393K | .17 | .29 | .57 | DE3E393K | | | | | | | | |
| .047 | .17 | .29 | .42 | DE3S473K | .17 | .29 | .42 | DE3C473K | .17 | .29 | .42 | DE3D473K | .23 | .36 | .55 | DE3E473K | | | | | | | | |
| .056 | .17 | .29 | .42 | DE3S563K | .17 | .29 | .42 | DE3C563K | .17 | .29 | .57 | DE3D563K | .23 | .36 | .55 | DE3E563K | | | | | | | | |
| .068 | .17 | .29 | .42 | DE3S683K | .17 | .29 | .42 | DE3C683K | .17 | .29 | .57 | DE3D683K | .23 | .36 | .55 | DE3E683K | | | | | | | | |
| .082 | .17 | .29 | .42 | DE3S823K | .17 | .29 | .42 | DE3C823K | .17 | .29 | .57 | DE3D823K | .23 | .36 | .55 | DE3E823K | | | | | | | | |
| .10 | .17 | .29 | .42 | DE3S104K | .17 | .29 | .42 | DE3C104K | .17 | .29 | .57 | DE3D104K | .29 | .42 | .57 | DE3E104K | | | | | | | | |
| .12 | .17 | .29 | .42 | DE3S124K | .17 | .29 | .42 | DE3C124K | .17 | .29 | .57 | DE3D124K | .29 | .42 | .57 | DE3E124K | | | | | | | | |
| .15 | .17 | .29 | .42 | DE3S154K | .17 | .29 | .57 | DE3C154K | .23 | .36 | .55 | DE3D154K | .29 | .42 | .67 | DE3E154K | | | | | | | | |
| .18 | .17 | .29 | .42 | DE3S184K | .17 | .29 | .57 | DE3C184K | .23 | .36 | .55 | DE3D184K | .29 | .42 | .67 | DE3E184K | | | | | | | | |
| .22 | .17 | .29 | .42 | DE3S224K | .23 | .36 | .55 | DE3C224K | .23 | .36 | .55 | DE3D224K | .29 | .42 | .67 | DE3E224K | | | | | | | | |
| .25 | .23 | .36 | .42 | DE3S254K | .23 | .36 | .55 | DE3C254K | .29 | .42 | .57 | DE3D254K | .29 | .42 | .82 | DE3E254K | | | | | | | | |
| .27 | .23 | .36 | .42 | DE3S274K | .23 | .36 | .55 | DE3C274K | .29 | .42 | .57 | DE3D274K | .29 | .42 | .82 | DE3E274K | | | | | | | | |
| .33 | .23 | .36 | .42 | DE3S334K | .23 | .36 | .55 | DE3C334K | .29 | .42 | .57 | DE3D334K | .39 | .54 | .82 | DE3E334K | | | | | | | | |
| .39 | .23 | .36 | .42 | DE3S394K | .23 | .36 | .55 | DE3C394K | .29 | .42 | .67 | DE3D394K | .39 | .54 | .82 | DE3E394K | | | | | | | | |
| .47 | .23 | .36 | .42 | DE3S474K | .29 | .42 | .57 | DE3C474K | .29 | .42 | .67 | DE3D474K | .39 | .54 | .82 | DE3E474K | | | | | | | | |
| .50 | .17 | .29 | .55 | DE3S504K | .29 | .42 | .57 | DE3C504K | .29 | .42 | .67 | DE3D504K | .39 | .54 | .82 | DE3E504K | | | | | | | | |
| .56 | .17 | .29 | .55 | DE3S564K | .29 | .42 | .57 | DE3C564K | .29 | .42 | .67 | DE3D564K | .39 | .54 | 1.04 | DE3E564K | | | | | | | | |
| .68 | .23 | .36 | .55 | DE3S684K | .29 | .42 | .57 | DE3C684K | .29 | .42 | .82 | DE3D684K | .39 | .54 | 1.04 | DE3E684K | | | | | | | | |
| .75 | .23 | .36 | .55 | DE3S754K | .29 | .42 | .57 | DE3C754K | .29 | .42 | .82 | DE3D754K | .39 | .54 | 1.04 | DE3E754K | | | | | | | | |
| .82 | .23 | .36 | .55 | DE3S824K | .29 | .42 | .67 | DE3C824K | .29 | .42 | .82 | DE3D824K | .39 | .54 | 1.19 | DE3E824K | | | | | | | | |
| 1.0 | .23 | .36 | .55 | DE3S105K | .29 | .42 | .67 | DE3C105K | .39 | .54 | .82 | DE3D105K | .39 | .54 | 1.19 | DE3E105K | | | | | | | | |
| 1.2 | .29 | .42 | .55 | DE3S125K | .39 | .54 | .82 | DE3C125K | .39 | .54 | .82 | DE3D125K | .56 | .72 | 1.75 | DE3E125K | | | | | | | | |
| 1.5 | .29 | .42 | .55 | DE3S155K | .39 | .54 | .82 | DE3C155K | .39 | .54 | .82 | DE3D155K | .56 | .72 | 1.75 | DE3E155K | | | | | | | | |
| 1.8 | .29 | .42 | .55 | DE3S185K | .39 | .54 | .82 | DE3C185K | .39 | .54 | 1.04 | DE3D185K | .56 | .72 | 1.75 | DE3E185K | | | | | | | | |
| 2.0 | .29 | .42 | .67 | DE3S205K | .39 | .54 | .82 | DE3C205K | .39 | .54 | 1.04 | DE3D205K | .56 | .72 | 1.75 | DE3E205K | | | | | | | | |
| 3.0 | .29 | .42 | .67 | DE3S305K | .39 | .54 | 1.04 | DE3C305K | .56 | .72 | 1.24 | DE3D305K | .56 | .72 | 1.75 | DE3E305K | | | | | | | | |
| 4.0 | .39 | .54 | .82 | DE3S405K | .56 | .72 | 1.24 | DE3C405K | .56 | .72 | 1.24 | DE3D405K | .76 | .96 | 1.75 | DE3E405K | | | | | | | | |
| 5.0 | .39 | .54 | .82 | DE3S505K | .56 | .72 | 1.24 | DE3C505K | .56 | .72 | 1.24 | DE3D505K | .76 | .96 | 1.75 | DE3E505K | | | | | | | | |
| 6.0 | .39 | .54 | .82 | DE3S605K | .56 | .72 | 1.24 | DE3C605K | .56 | .72 | 1.75 | DE3D605K | .76 | .96 | 1.75 | DE3E605K | | | | | | | | |
| 8.0 | .50 | .68 | 1.04 | DE3S805K | .56 | .72 | 1.24 | DE3C805K | .56 | .72 | 1.75 | DE3D805K | .97 | 1.21 | 1.75 | DE3E805K | | | | | | | | |
| 10.0 | .50 | .68 | 1.04 | DE3S106K | .56 | .72 | 1.24 | DE3C106K | .56 | .72 | 1.95 | DE3D106K | .97 | 1.21 | 1.75 | DE3E106K | | | | | | | | |
| 12.0 | .50 | .68 | 1.24 | DE3S126K | .56 | .72 | 1.24 | DE3C126K | .76 | .96 | 2.10 | DE3D126K | .97 | 1.21 | 2.25 | DE3E126K | | | | | | | | |
| 15.0 | .50 | .68 | 1.24 | DE3S156K | .56 | .72 | 1.75 | DE3C156K | .76 | .96 | 2.10 | DE3D156K | .97 | 1.21 | 2.25 | DE3E156K | | | | | | | | |
| 20.0 | .50 | .68 | 1.24 | DE3S206K | .76 | .96 | 1.75 | DE3C206K | .76 | .96 | 2.10 | DE3D206K | 1.23 | 1.60 | 2.25 | DE3E206K | | | | | | | | |
| 30.0 | .58 | .79 | 1.24 | DE3S306K | .76 | .96 | 1.75 | DE3C306K | .97 | 1.21 | 2.10 | DE3D306K | 1.59 | 1.81 | 2.25 | DE3E306K | | | | | | | | |
| 40.0 | .76 | .96 | 1.24 | DE3S406K | .97 | 1.21 | 1.75 | DE3C406K | 1.23 | 1.60 | 2.10 | DE3D406K | 1.88 | 2.36 | 3.25 | DE3E406K | | | | | | | | |
| 50.0 | .76 | .96 | 1.40 | DE3S506K | .97 | 1.21 | 1.75 | DE3C506K | 1.23 | 1.60 | 2.10 | DE3D506K | 1.88 | 2.36 | 3.25 | DE3E506K | | | | | | | | |
| 75.0 | .76 | .96 | 1.65 | DE3S756K | 1.23 | 1.60 | 1.75 | DE3C756K | 1.59 | 1.81 | 2.10 | DE3D756K | 1.88 | 2.36 | 3.25 | DE3E756K | | | | | | | | |
| 100.0 | .76 | .96 | 2.10 | DE3S107K | 1.23 | 1.60 | 1.75 | DE3C107K | 1.88 | 2.36 | 2.10 | DE3D107K | 2.18 | 2.27 | 3.25 | DE3E107K | | | | | | | | |

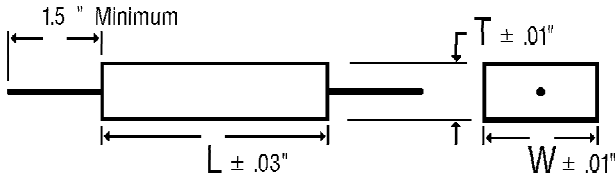
Note: Replace the last digit **K** with the desired tolerance code from the tolerance table. For an in-between value use the next larger value's dimensions. Custom sizes are readily available. All dimensions are in inches.

METALLIZED MYLAR EPOXY CASE, AXIAL LEAD, RECTANGULAR CAPACITORS



DE3
METALLIZED MYLAR
EPOXY CASE, AXIAL, RECT.
REGULAR SERIES

DIMENSIONS See tables for specific T, W, L values.



WIRE SIZE (Length 1.5" Minimum)

| BODY LENGTH (L) | WIRE SIZE | |
|-----------------|-----------|----------|
| | AWG No. | Diameter |
| ≤ 0.67" | 24 | 0.020" |
| > 0.67" ≤ 1.06" | 22 | 0.025" |
| > 1.06" | 20 | 0.032" |

SELECTION AND ORDERING TABLES Select voltage rating, capacitance and tolerance, read Part Number to the right.

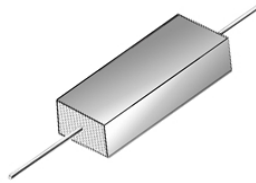
| MFD | 400VDC 160VAC | | | | 600VDC 230VAC | | | | 1000VDC 360VAC | | | | 2000VDC 700VAC | | | |
|-------|---------------|--------|--------|----------|---------------|--------|--------|----------|----------------|--------|--------|----------|----------------|--------|--------|----------|
| | RATING | T | W | L | PART # | T | W | L | PART # | T | W | L | PART # | T | W | L |
| | ± .01" | ± .01" | ± .03" | | ± .01" | ± .01" | ± .03" | | ± .01" | ± .01" | ± .03" | | ± .01" | ± .01" | ± .03" | |
| .001 | .17 | .29 | .42 | DE3G102K | .17 | .29 | .42 | DE3J102K | .29 | .42 | 1.06 | DE3M102K | .29 | .42 | 1.06 | DE3R102K |
| .0012 | .17 | .29 | .42 | DE3G122K | .17 | .29 | .42 | DE3J122K | .29 | .42 | 1.06 | DE3M122K | .29 | .42 | 1.06 | DE3R122K |
| .0015 | .17 | .29 | .42 | DE3G152K | .17 | .29 | .42 | DE3J152K | .29 | .42 | 1.06 | DE3M152K | .29 | .42 | 1.06 | DE3R152K |
| .0018 | .17 | .29 | .42 | DE3G182K | .17 | .29 | .42 | DE3J182K | .29 | .42 | 1.06 | DE3M182K | .29 | .42 | 1.06 | DE3R182K |
| .0022 | .17 | .29 | .42 | DE3G222K | .17 | .29 | .42 | DE3J222K | .29 | .42 | 1.06 | DE3M222K | .29 | .42 | 1.06 | DE3R222K |
| .0027 | .17 | .29 | .42 | DE3G272K | .17 | .29 | .42 | DE3J272K | .29 | .42 | 1.06 | DE3M272K | .29 | .42 | 1.06 | DE3R272K |
| .0033 | .17 | .29 | .42 | DE3G332K | .17 | .29 | .42 | DE3J332K | .29 | .42 | 1.06 | DE3M332K | .29 | .42 | 1.06 | DE3R332K |
| .0039 | .17 | .29 | .42 | DE3G392K | .17 | .29 | .42 | DE3J392K | .29 | .42 | 1.06 | DE3M392K | .29 | .42 | 1.06 | DE3R392K |
| .0047 | .17 | .29 | .42 | DE3G472K | .17 | .29 | .42 | DE3J472K | .29 | .42 | 1.06 | DE3M472K | .29 | .42 | 1.06 | DE3R472K |
| .0056 | .17 | .29 | .42 | DE3G562K | .17 | .29 | .42 | DE3J562K | .29 | .42 | 1.06 | DE3M562K | .39 | .54 | 1.06 | DE3R562K |
| .0068 | .17 | .29 | .42 | DE3G682K | .17 | .29 | .42 | DE3J682K | .29 | .42 | 1.06 | DE3M682K | .39 | .54 | 1.06 | DE3R682K |
| .0082 | .17 | .29 | .42 | DE3G822K | .17 | .29 | .42 | DE3J822K | .29 | .42 | 1.06 | DE3M822K | .39 | .54 | 1.06 | DE3R822K |
| .01 | .17 | .29 | .57 | DE3G103K | .17 | .29 | .57 | DE3J103K | .29 | .42 | 1.06 | DE3M103K | .39 | .54 | 1.06 | DE3R103K |
| .012 | .17 | .29 | .57 | DE3G123K | .23 | .36 | .55 | DE3J123K | .29 | .42 | 1.06 | DE3M123K | .56 | .72 | 1.06 | DE3R123K |
| .015 | .17 | .29 | .57 | DE3G153K | .23 | .36 | .55 | DE3J153K | .29 | .42 | 1.06 | DE3M153K | .56 | .72 | 1.06 | DE3R153K |
| .018 | .17 | .29 | .57 | DE3G183K | .23 | .36 | .55 | DE3J183K | .29 | .42 | 1.06 | DE3M183K | .56 | .72 | 1.06 | DE3R183K |
| .022 | .17 | .29 | .57 | DE3G223K | .29 | .42 | .57 | DE3J223K | .39 | .54 | 1.06 | DE3M223K | .56 | .72 | 1.35 | DE3R223K |
| .027 | .23 | .36 | .55 | DE3G273K | .29 | .42 | .57 | DE3J273K | .39 | .54 | 1.06 | DE3M273K | .56 | .72 | 1.35 | DE3R273K |
| .033 | .23 | .36 | .55 | DE3G333K | .29 | .42 | .67 | DE3J333K | .39 | .54 | 1.06 | DE3M333K | .56 | .72 | 1.35 | DE3R333K |
| .039 | .23 | .36 | .55 | DE3G393K | .29 | .42 | .67 | DE3J393K | .39 | .54 | 1.06 | DE3M393K | .56 | .72 | 1.35 | DE3R393K |
| .047 | .29 | .42 | .57 | DE3G473K | .29 | .42 | .67 | DE3J473K | .56 | .72 | 1.06 | DE3M473K | .76 | .96 | 1.35 | DE3R473K |
| .056 | .29 | .42 | .57 | DE3G563K | .29 | .42 | .82 | DE3J563K | .56 | .72 | 1.06 | DE3M563K | .76 | .96 | 1.35 | DE3R563K |
| .068 | .29 | .42 | .57 | DE3G683K | .29 | .42 | .82 | DE3J683K | .56 | .72 | 1.06 | DE3M683K | .76 | .96 | 1.35 | DE3R683K |
| .082 | .29 | .42 | .67 | DE3G823K | .39 | .54 | .82 | DE3J823K | .56 | .72 | 1.06 | DE3M823K | .76 | .96 | 1.75 | DE3R823K |
| .10 | .29 | .42 | .67 | DE3G104K | .39 | .54 | .82 | DE3J104K | .56 | .72 | 1.35 | DE3M104K | .76 | .96 | 1.75 | DE3R104K |
| .12 | .29 | .42 | .82 | DE3G124K | .39 | .54 | .82 | DE3J124K | .56 | .72 | 1.35 | DE3M124K | .76 | .96 | 1.75 | DE3R124K |
| .15 | .29 | .42 | .82 | DE3G154K | .39 | .54 | 1.04 | DE3J154K | .56 | .72 | 1.35 | DE3M154K | .97 | 1.21 | 1.75 | DE3R154K |
| .18 | .39 | .54 | .82 | DE3G184K | .39 | .54 | 1.04 | DE3J184K | .56 | .72 | 1.35 | DE3M184K | .97 | 1.21 | 1.75 | DE3R184K |
| .22 | .39 | .54 | .82 | DE3G224K | .39 | .54 | 1.19 | DE3J224K | .76 | .96 | 1.35 | DE3M224K | .97 | 1.21 | 1.75 | DE3R224K |
| .25 | .39 | .54 | .82 | DE3G254K | .56 | .72 | 1.24 | DE3J254K | .76 | .96 | 1.35 | DE3M254K | .97 | 1.21 | 1.75 | DE3R254K |
| .27 | .39 | .54 | .82 | DE3G274K | .56 | .72 | 1.24 | DE3J274K | .76 | .96 | 1.35 | DE3M274K | 1.23 | 1.60 | 1.75 | DE3R274K |
| .33 | .39 | .54 | 1.19 | DE3G334K | .56 | .72 | 1.24 | DE3J334K | .76 | .96 | 1.75 | DE3M334K | 1.23 | 1.60 | 1.75 | DE3R334K |
| .39 | .39 | .54 | 1.19 | DE3G394K | .56 | .72 | 1.24 | DE3J394K | .76 | .96 | 1.75 | DE3M394K | .97 | 1.21 | 2.50 | DE3R394K |
| .47 | .39 | .54 | 1.19 | DE3G474K | .56 | .72 | 1.24 | DE3J474K | .76 | .96 | 1.75 | DE3M474K | .97 | 1.21 | 2.50 | DE3R474K |
| .50 | .39 | .54 | 1.19 | DE3G504K | .56 | .72 | 1.24 | DE3J504K | .76 | .96 | 1.75 | DE3M504K | | | | |
| .56 | .56 | .72 | 1.24 | DE3G564K | .56 | .72 | 1.75 | DE3J564K | .76 | .96 | 1.75 | DE3M564K | | | | |
| .68 | .56 | .72 | 1.24 | DE3G684K | .56 | .72 | 1.75 | DE3J684K | .97 | 1.21 | 1.75 | DE3M684K | | | | |
| .75 | .56 | .72 | 1.24 | DE3G754K | .56 | .72 | 1.75 | DE3J754K | .97 | 1.21 | 1.75 | DE3M754K | | | | |
| .82 | .56 | .72 | 1.24 | DE3G824K | .56 | .72 | 1.75 | DE3J824K | .97 | 1.21 | 1.75 | DE3M824K | | | | |
| 1.0 | .56 | .72 | 1.24 | DE3G105K | .76 | .96 | 1.75 | DE3J105K | .97 | 1.21 | 1.75 | DE3M105K | | | | |
| 1.2 | .56 | .72 | 1.75 | DE3G125K | .76 | .96 | 1.75 | DE3J125K | .97 | 1.21 | 2.50 | DE3M125K | | | | |
| 1.5 | .56 | .72 | 1.75 | DE3G155K | .76 | .96 | 1.75 | DE3J155K | .97 | 1.21 | 2.50 | DE3M155K | | | | |
| 1.8 | .76 | .96 | 1.75 | DE3G185K | .97 | 1.21 | 1.75 | DE3J185K | .97 | 1.21 | 2.50 | DE3M185K | | | | |
| 2.0 | .76 | .96 | 1.75 | DE3G205K | .97 | 1.21 | 1.75 | DE3J205K | 1.23 | 1.60 | 2.50 | DE3M205K | | | | |
| 3.0 | .76 | .96 | 1.75 | DE3G305K | 1.23 | 1.60 | 1.75 | DE3J305K | 1.23 | 1.60 | 2.50 | DE3M305K | | | | |
| 4.0 | .97 | 1.21 | 1.75 | DE3G405K | 1.23 | 1.60 | 2.25 | DE3J405K | 1.59 | 1.81 | 2.50 | DE3M405K | | | | |
| 5.0 | .97 | 1.21 | 1.75 | DE3G505K | 1.23 | 1.60 | 2.25 | DE3J505K | 1.88 | 2.36 | 2.50 | DE3M505K | | | | |
| 6.0 | .97 | 1.21 | 2.25 | DE3G605K | 1.23 | 1.60 | 2.25 | DE3J605K | 1.88 | 2.36 | 2.50 | DE3M605K | | | | |
| 8.0 | 1.23 | 1.60 | 2.25 | DE3G805K | 1.59 | 1.81 | 2.25 | DE3J805K | 1.88 | 2.36 | 3.25 | DE3M805K | | | | |
| 10.0 | 1.23 | 1.60 | 2.25 | DE3G106K | 1.59 | 1.81 | 2.25 | DE3J106K | 2.18 | 2.27 | 3.25 | DE3M106K | | | | |
| 12.0 | 1.23 | 1.60 | 2.25 | DE3G126K | 1.88 | 2.36 | 2.25 | DE3J126K | | | | DE3M126K | | | | |
| 15.0 | 1.59 | 1.81 | 2.25 | DE3G156K | 2.18 | 2.27 | 2.25 | DE3J156K | | | | DE3M156K | | | | |

TOLERANCE TABLE

| Code | Tolerance |
|------|-----------|
| A | ± 0.1% ♦ |
| B | ± 0.25% ♦ |
| D | ± 0.5% ♦ |
| F | ± 1% ♦ |
| G | ± 2% ♦ |
| H | ± 3% ♦ |
| J | ± 5% |
| K | ± 10% |
| M | ± 20% |
| N | ± 30% |
| P | GMV |
| S | -10% +30% |
| T | -10% +50% |
| V | -10% +20% |
| X | Special |

Note: Replace the last digit **K** with the desired tolerance code from the tolerance table. For an in-between value use the next larger value's dimensions. Custom sizes are readily available. All dimensions are in inches.

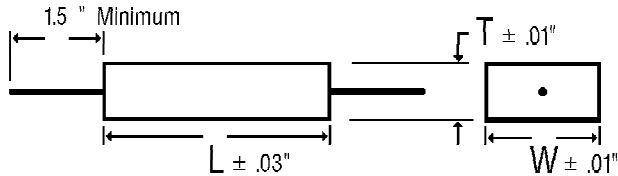
METALLIZED MYLAR EPOXY CASE, AXIAL LEAD, RECTANGULAR CAPACITORS



DE2
METALLIZED MYLAR
EPOXY CASE, AXIAL, RECT.
MINIATURE SERIES

DIMENSIONS See tables for specific T, W, L values.

WIRE SIZE (Length 1.5" Minimum)



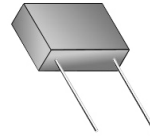
| BODY LENGTH (L) | WIRE SIZE | |
|-----------------|-----------|----------|
| | AWG No. | Diameter |
| ≤ 0.67" | 24 | 0.020" |
| > 0.67" ≤ 1.06" | 22 | 0.025" |
| > 1.06" | 20 | 0.032" |

SELECTION AND ORDERING TABLES Select voltage rating, capacitance and tolerance, read Part Number to the right.

| MFD | 100VDC 40VAC | | | | 200VDC 100VAC | | | | 400VDC 160VAC | | | | 600VDC 230VAC | | | | |
|-------|--------------|--------|--------|----------|---------------|--------|--------|----------|---------------|--------|--------|----------|---------------|--------|--------|----------|--------|
| | RATING | T | W | L | PART # | T | W | L | PART # | T | W | L | PART # | T | W | L | PART # |
| | | ± .01" | ± .01" | ± .03" | | ± .01" | ± .01" | ± .03" | | ± .01" | ± .01" | ± .03" | | ± .01" | ± .01" | ± .03" | |
| .001 | .17 | .29 | .42 | DE2D102K | .17 | .29 | .42 | DE2E102K | .17 | .29 | .42 | DE2G102K | .17 | .29 | .42 | DE2J102K | |
| .0012 | .17 | .29 | .42 | DE2D122K | .17 | .29 | .42 | DE2E122K | .17 | .29 | .42 | DE2G122K | .17 | .29 | .42 | DE2J122K | |
| .0015 | .17 | .29 | .42 | DE2D152K | .17 | .29 | .42 | DE2E152K | .17 | .29 | .42 | DE2G152K | .17 | .29 | .42 | DE2J152K | |
| .0018 | .17 | .29 | .42 | DE2D182K | .17 | .29 | .42 | DE2E182K | .17 | .29 | .42 | DE2G182K | .17 | .29 | .42 | DE2J182K | |
| .0022 | .17 | .29 | .42 | DE2D222K | .17 | .29 | .42 | DE2E222K | .17 | .29 | .42 | DE2G222K | .17 | .29 | .42 | DE2J222K | |
| .0027 | .17 | .29 | .42 | DE2D272K | .17 | .29 | .42 | DE2E272K | .17 | .29 | .42 | DE2G272K | .17 | .29 | .42 | DE2J272K | |
| .0033 | .17 | .29 | .42 | DE2D332K | .17 | .29 | .42 | DE2E332K | .17 | .29 | .42 | DE2G332K | .17 | .29 | .55 | DE2J332K | |
| .0039 | .17 | .29 | .42 | DE2D392K | .17 | .29 | .42 | DE2E392K | .17 | .29 | .42 | DE2G392K | .17 | .29 | .55 | DE2J392K | |
| .0047 | .17 | .29 | .42 | DE2D472K | .17 | .29 | .42 | DE2E472K | .17 | .29 | .42 | DE2G472K | .17 | .29 | .55 | DE2J472K | |
| .0056 | .17 | .29 | .42 | DE2D562K | .17 | .29 | .42 | DE2E562K | .17 | .29 | .42 | DE2G562K | .17 | .29 | .55 | DE2J562K | |
| .0068 | .17 | .29 | .42 | DE2D682K | .17 | .29 | .42 | DE2E682K | .17 | .29 | .42 | DE2G682K | .17 | .29 | .55 | DE2J682K | |
| .0082 | .17 | .29 | .42 | DE2D822K | .17 | .29 | .42 | DE2E822K | .17 | .29 | .55 | DE2G822K | .23 | .36 | .55 | DE2J822K | |
| .01 | .17 | .29 | .42 | DE2D103K | .17 | .29 | .42 | DE2E103K | .17 | .29 | .55 | DE2G103K | .23 | .36 | .55 | DE2J103K | |
| .012 | .17 | .29 | .42 | DE2D123K | .17 | .29 | .42 | DE2E123K | .17 | .29 | .55 | DE2G123K | .23 | .36 | .55 | DE2J123K | |
| .015 | .17 | .29 | .42 | DE2D153K | .17 | .29 | .42 | DE2E153K | .17 | .29 | .55 | DE2G153K | .23 | .42 | .55 | DE2J153K | |
| .018 | .17 | .29 | .42 | DE2D183K | .17 | .29 | .42 | DE2E183K | .17 | .29 | .55 | DE2G183K | .29 | .42 | .55 | DE2J183K | |
| .022 | .17 | .29 | .42 | DE2D223K | .17 | .29 | .55 | DE2E223K | .23 | .36 | .55 | DE2G223K | .29 | .42 | .55 | DE2J223K | |
| .027 | .17 | .29 | .42 | DE2D273K | .17 | .29 | .55 | DE2E273K | .23 | .36 | .55 | DE2G273K | .29 | .42 | .67 | DE2J273K | |
| .033 | .17 | .29 | .42 | DE2D333K | .17 | .29 | .55 | DE2E333K | .23 | .36 | .55 | DE2G333K | .29 | .42 | .67 | DE2J333K | |
| .039 | .17 | .29 | .42 | DE2D393K | .17 | .29 | .55 | DE2E393K | .29 | .42 | .55 | DE2G393K | .29 | .42 | .82 | DE2J393K | |
| .047 | .17 | .29 | .42 | DE2D473K | .17 | .29 | .55 | DE2E473K | .29 | .42 | .55 | DE2G473K | .29 | .42 | .82 | DE2J473K | |
| .056 | .17 | .29 | .42 | DE2D563K | .17 | .29 | .55 | DE2E563K | .29 | .42 | .55 | DE2G563K | .39 | .54 | .82 | DE2J563K | |
| .068 | .17 | .29 | .42 | DE2D683K | .23 | .36 | .55 | DE2E683K | .29 | .42 | .67 | DE2G683K | .39 | .54 | .82 | DE2J683K | |
| .082 | .17 | .29 | .42 | DE2D823K | .23 | .36 | .55 | DE2E823K | .29 | .42 | .67 | DE2G823K | .39 | .54 | .82 | DE2J823K | |
| .10 | .17 | .29 | .55 | DE2D104K | .23 | .36 | .55 | DE2E104K | .29 | .42 | .67 | DE2G104K | .39 | .54 | 1.04 | DE2J104K | |
| .12 | .17 | .29 | .55 | DE2D124K | .23 | .36 | .55 | DE2E124K | .29 | .42 | .82 | DE2G124K | .39 | .54 | 1.24 | DE2J124K | |
| .15 | .17 | .29 | .55 | DE2D154K | .29 | .42 | .55 | DE2E154K | .29 | .42 | .82 | DE2G154K | .39 | .54 | 1.24 | DE2J154K | |
| .18 | .17 | .29 | .55 | DE2D184K | .29 | .42 | .55 | DE2E184K | .39 | .54 | .82 | DE2G184K | .39 | .54 | 1.24 | DE2J184K | |
| .22 | .17 | .29 | .55 | DE2D224K | .29 | .42 | .67 | DE2E224K | .39 | .54 | .82 | DE2G224K | .56 | .72 | 1.24 | DE2J224K | |
| .27 | .23 | .36 | .55 | DE2D274K | .29 | .42 | .67 | DE2E274K | .39 | .54 | .82 | DE2G274K | .56 | .72 | 1.24 | DE2J274K | |
| .33 | .23 | .36 | .55 | DE2D334K | .29 | .42 | .67 | DE2E334K | .39 | .54 | 1.04 | DE2G334K | .56 | .72 | 1.24 | DE2J334K | |
| .39 | .23 | .36 | .55 | DE2D394K | .29 | .42 | .82 | DE2E394K | .39 | .54 | 1.24 | DE2G394K | .56 | .72 | 1.50 | DE2J394K | |
| .47 | .23 | .36 | .55 | DE2D474K | .39 | .54 | .82 | DE2E474K | .39 | .54 | 1.24 | DE2G474K | .56 | .72 | 1.50 | DE2J474K | |
| .56 | .29 | .42 | .55 | DE2D564K | .39 | .54 | .82 | DE2E564K | .39 | .54 | 1.24 | DE2G564K | .56 | .72 | 1.75 | DE2J564K | |
| .68 | .29 | .42 | .55 | DE2D684K | .39 | .54 | .82 | DE2E684K | .56 | .72 | 1.24 | DE2G684K | .56 | .72 | 1.95 | DE2J684K | |
| .82 | .29 | .42 | .67 | DE2D824K | .39 | .54 | .82 | DE2E824K | .56 | .72 | 1.24 | DE2G824K | | | | | |
| 1.0 | .29 | .42 | .67 | DE2D105K | .39 | .54 | 1.04 | DE2E105K | .56 | .72 | 1.24 | DE2G105K | | | | | |
| 1.2 | .29 | .42 | .67 | DE2D125K | .39 | .54 | 1.24 | DE2E125K | .56 | .72 | 1.50 | DE2G125K | | | | | |
| 1.5 | .29 | .42 | .82 | DE2D155K | .39 | .54 | 1.24 | DE2E155K | .56 | .72 | 1.50 | DE2G155K | | | | | |
| 1.8 | .29 | .42 | .82 | DE2D185K | .39 | .54 | 1.24 | DE2E185K | .56 | .72 | 1.75 | DE2G185K | | | | | |
| 2.0 | .39 | .54 | .82 | DE2D205K | .56 | .72 | 1.24 | DE2E205K | .56 | .72 | 1.95 | DE2G205K | | | | | |
| 3.0 | .39 | .54 | .82 | DE2D305K | .56 | .72 | 1.24 | DE2E305K | | | | | | | | | |
| 4.0 | .39 | .54 | 1.04 | DE2D405K | .56 | .72 | 1.50 | DE2E405K | | | | | | | | | |
| 5.0 | .39 | .54 | 1.24 | DE2D505K | .56 | .72 | 1.75 | DE2E505K | | | | | | | | | |
| 6.0 | .39 | .54 | 1.24 | DE2D605K | | | | | | | | | | | | | |
| 8.0 | .56 | .72 | 1.24 | DE2D805K | | | | | | | | | | | | | |
| 10.0 | .56 | .72 | 1.24 | DE2D106K | | | | | | | | | | | | | |
| 12.0 | .56 | .72 | 1.50 | DE2D126K | | | | | | | | | | | | | |
| 15.0 | .56 | .72 | 1.50 | DE2D156K | | | | | | | | | | | | | |

Note: Replace the last digit **K** with the desired tolerance code from the tolerance table. For an in-between value use the next larger value's dimensions. Custom sizes are readily available. All dimensions are in inches.

METALLIZED MYLAR EPOXY CASE, RADIAL LEAD, RECTANGULAR CAPACITORS

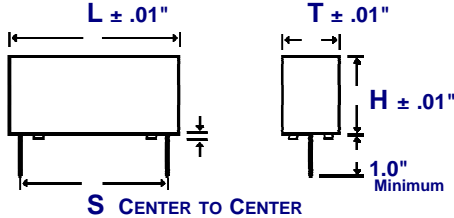


DF2

METALLIZED MYLAR
EPOXY CASE, RADIAL, RECT.
MINIATURE SERIES

DIMENSIONS See tables for specific T, H, L, S values.

WIRE SIZE (Length 1.0" Minimum)



** The mounting pads consist of two individual pads on each end or one continuous pad on each end, depending on the mold. (not an option).

| BODY LENGTH (L) | LEAD SPACING (S) (C to C ± .01") | WIRE SIZE | |
|-----------------|-------------------------------------|-----------|----------|
| | | AWG No. | Diameter |
| .42" | .300" | 22 | 0.025" |
| .55" | .400" | 22 | 0.025" |
| .67" | .500" | 22 | 0.025" |
| .82" | .600" | 22 | 0.025" |
| 1.04" | .800" | 22 | 0.025" |
| 1.24" | 1.100" | 20 | 0.032" |
| 1.75" | 1.600" | 20 | 0.032" |

SELECTION AND ORDERING TABLES Select voltage rating, capacitance and tolerance, read Part Number to the right.

| MFD | 100VDC 40VAC | | | | 200VDC 100VAC | | | | 400VDC 160VAC | | | | 600VDC 230VAC | | | | |
|-------|--------------|--------|--------|----------|---------------|--------|--------|----------|---------------|--------|--------|----------|---------------|--------|--------|----------|--------|
| | RATING | T | H | L | PART # | T | H | L | PART # | T | H | L | PART # | T | H | L | PART # |
| | ± .01" | ± .01" | ± .01" | | ± .01" | ± .01" | ± .01" | | ± .01" | ± .01" | ± .01" | | ± .01" | ± .01" | ± .01" | | |
| .001 | .18 | .30 | .42 | DF2D102K | .18 | .30 | .42 | DF2E102K | .18 | .30 | .42 | DF2G102K | .18 | .30 | .42 | DF2J102K | |
| .0012 | .18 | .30 | .42 | DF2D122K | .18 | .30 | .42 | DF2E122K | .18 | .30 | .42 | DF2G122K | .18 | .30 | .42 | DF2J122K | |
| .0015 | .18 | .30 | .42 | DF2D152K | .18 | .30 | .42 | DF2E152K | .18 | .30 | .42 | DF2G152K | .18 | .30 | .42 | DF2J152K | |
| .0018 | .18 | .30 | .42 | DF2D182K | .18 | .30 | .42 | DF2E182K | .18 | .30 | .42 | DF2G182K | .18 | .30 | .42 | DF2J182K | |
| .0022 | .18 | .30 | .42 | DF2D222K | .18 | .30 | .42 | DF2E222K | .18 | .30 | .42 | DF2G222K | .18 | .30 | .42 | DF2J222K | |
| .0027 | .18 | .30 | .42 | DF2D272K | .18 | .30 | .42 | DF2E272K | .18 | .30 | .42 | DF2G272K | .18 | .30 | .42 | DF2J272K | |
| .0033 | .18 | .30 | .42 | DF2D332K | .18 | .30 | .42 | DF2E332K | .18 | .30 | .42 | DF2G332K | .18 | .30 | .42 | DF2J332K | |
| .0039 | .18 | .30 | .42 | DF2D392K | .18 | .30 | .42 | DF2E392K | .18 | .30 | .42 | DF2G392K | .18 | .30 | .42 | DF2J392K | |
| .0047 | .18 | .30 | .42 | DF2D472K | .18 | .30 | .42 | DF2E472K | .18 | .30 | .42 | DF2G472K | .18 | .30 | .42 | DF2J472K | |
| .0056 | .18 | .30 | .42 | DF2D562K | .18 | .30 | .42 | DF2E562K | .18 | .30 | .42 | DF2G562K | .18 | .30 | .55 | DF2J562K | |
| .0068 | .18 | .30 | .42 | DF2D682K | .18 | .30 | .42 | DF2E682K | .18 | .30 | .42 | DF2G682K | .18 | .30 | .55 | DF2J682K | |
| .0082 | .18 | .30 | .42 | DF2D822K | .18 | .30 | .42 | DF2E822K | .18 | .30 | .55 | DF2G822K | .18 | .30 | .55 | DF2J822K | |
| .01 | .18 | .30 | .42 | DF2D103K | .18 | .30 | .42 | DF2E103K | .18 | .30 | .55 | DF2G103K | .24 | .37 | .55 | DF2J103K | |
| .012 | .18 | .30 | .42 | DF2D123K | .18 | .30 | .42 | DF2E123K | .18 | .30 | .55 | DF2G123K | .24 | .37 | .55 | DF2J123K | |
| .015 | .18 | .30 | .42 | DF2D153K | .18 | .30 | .42 | DF2E153K | .18 | .30 | .55 | DF2G153K | .24 | .37 | .55 | DF2J153K | |
| .018 | .18 | .30 | .42 | DF2D183K | .18 | .30 | .42 | DF2E183K | .18 | .30 | .55 | DF2G183K | .30 | .43 | .55 | DF2J183K | |
| .022 | .18 | .30 | .42 | DF2D223K | .18 | .30 | .55 | DF2E223K | .18 | .30 | .55 | DF2G223K | .30 | .43 | .55 | DF2J223K | |
| .027 | .18 | .30 | .42 | DF2D273K | .18 | .30 | .55 | DF2E273K | .24 | .37 | .55 | DF2G273K | .30 | .43 | .67 | DF2J273K | |
| .033 | .18 | .30 | .42 | DF2D333K | .18 | .30 | .55 | DF2E333K | .24 | .37 | .55 | DF2G333K | .30 | .43 | .67 | DF2J333K | |
| .039 | .18 | .30 | .42 | DF2D393K | .18 | .30 | .55 | DF2E393K | .24 | .37 | .55 | DF2G393K | .30 | .43 | .82 | DF2J393K | |
| .047 | .18 | .30 | .42 | DF2D473K | .18 | .30 | .55 | DF2E473K | .30 | .43 | .55 | DF2G473K | .30 | .43 | .82 | DF2J473K | |
| .056 | .18 | .30 | .42 | DF2D563K | .18 | .30 | .55 | DF2E563K | .30 | .43 | .55 | DF2G563K | .40 | .55 | .82 | DF2J563K | |
| .068 | .18 | .30 | .42 | DF2D683K | .18 | .30 | .55 | DF2E683K | .30 | .43 | .67 | DF2G683K | .40 | .55 | .82 | DF2J683K | |
| .082 | .18 | .30 | .42 | DF2D823K | .24 | .37 | .55 | DF2E823K | .30 | .43 | .67 | DF2G823K | .40 | .55 | .82 | DF2J823K | |
| .10 | .18 | .30 | .55 | DF2D104K | .24 | .37 | .55 | DF2E104K | .30 | .43 | .67 | DF2G104K | .40 | .55 | 1.04 | DF2J104K | |
| .12 | .18 | .30 | .55 | DF2D124K | .24 | .37 | .55 | DF2E124K | .30 | .43 | .82 | DF2G124K | .40 | .55 | 1.24 | DF2J124K | |
| .15 | .18 | .30 | .55 | DF2D154K | .30 | .43 | .55 | DF2E154K | .30 | .43 | .82 | DF2G154K | .40 | .55 | 1.24 | DF2J154K | |
| .18 | .18 | .30 | .55 | DF2D184K | .30 | .43 | .55 | DF2E184K | .40 | .55 | .82 | DF2G184K | .40 | .55 | 1.24 | DF2J184K | |
| .22 | .18 | .30 | .55 | DF2D224K | .30 | .43 | .67 | DF2E224K | .40 | .55 | .82 | DF2G224K | .57 | .73 | 1.24 | DF2J224K | |
| .27 | .18 | .30 | .55 | DF2D274K | .30 | .43 | .67 | DF2E274K | .40 | .55 | .82 | DF2G274K | .57 | .73 | 1.24 | DF2J274K | |
| .33 | .24 | .37 | .55 | DF2D334K | .30 | .43 | .67 | DF2E334K | .40 | .55 | 1.04 | DF2G334K | .57 | .73 | 1.24 | DF2J334K | |
| .39 | .24 | .37 | .55 | DF2D394K | .30 | .43 | .82 | DF2E394K | .40 | .55 | 1.24 | DF2G394K | .57 | .73 | 1.75 | DF2J394K | |
| .47 | .24 | .37 | .55 | DF2D474K | .30 | .43 | .82 | DF2E474K | .40 | .55 | 1.24 | DF2G474K | .57 | .73 | 1.75 | DF2J474K | |
| .56 | .30 | .43 | .55 | DF2D564K | .40 | .55 | .82 | DF2E564K | .40 | .55 | 1.24 | DF2G564K | .57 | .73 | 1.75 | DF2J564K | |
| .68 | .30 | .43 | .55 | DF2D684K | .40 | .55 | .82 | DF2E684K | .57 | .73 | 1.24 | DF2G684K | | | | | |
| .82 | .30 | .43 | .67 | DF2D824K | .40 | .55 | .82 | DF2E824K | .57 | .73 | 1.24 | DF2G824K | | | | | |
| 1.0 | .30 | .43 | .67 | DF2D105K | .40 | .55 | 1.04 | DF2E105K | .57 | .73 | 1.24 | DF2G105K | | | | | |
| 1.2 | .30 | .43 | .67 | DF2D125K | .40 | .55 | 1.24 | DF2E125K | .57 | .73 | 1.75 | DF2G125K | | | | | |
| 1.5 | .30 | .43 | .82 | DF2D155K | .40 | .55 | 1.24 | DF2E155K | .57 | .73 | 1.75 | DF2G155K | | | | | |
| 1.8 | .30 | .43 | .82 | DF2D185K | .40 | .55 | 1.24 | DF2E185K | .57 | .73 | 1.75 | DF2G185K | | | | | |
| 2.0 | .40 | .55 | .82 | DF2D205K | .57 | .73 | 1.24 | DF2E205K | | | | | | | | | |
| 3.0 | .40 | .55 | .82 | DF2D305K | .57 | .73 | 1.24 | DF2E305K | | | | | | | | | |
| 4.0 | .40 | .55 | 1.04 | DF2D405K | .57 | .73 | 1.75 | DF2E405K | | | | | | | | | |
| 5.0 | .40 | .55 | 1.24 | DF2D505K | .57 | .73 | 1.75 | DF2E505K | | | | | | | | | |
| 6.0 | .40 | .55 | 1.24 | DF2D605K | | | | | | | | | | | | | |
| 8.0 | .57 | .73 | 1.24 | DF2D805K | | | | | | | | | | | | | |
| 10.0 | .57 | .73 | 1.24 | DF2D106K | | | | | | | | | | | | | |
| 12.0 | .57 | .73 | 1.24 | DF2D126K | | | | | | | | | | | | | |
| 15.0 | .57 | .73 | 1.75 | DF2D156K | | | | | | | | | | | | | |

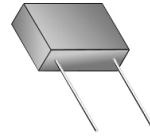
TOLERANCE TABLE

| Code | Tolerance |
|------|-----------|
| A | ± 0.1% ♦ |
| B | ± 0.25% ♦ |
| D | ± 0.5% ♦ |
| F | ± 1% ♦ |
| G | ± 2% ♦ |
| H | ± 3% ♦ |
| J | ± 5% |
| K | ± 10% |
| M | ± 20% |
| N | ± 30% |
| P | GMV |
| S | -10% +30% |
| T | -10% +50% |
| V | -10% +20% |
| X | Special |

♦ Temperature Stabilized

Note: Replace the last digit **K** with the desired tolerance code from the tolerance table. For an in-between value use the next larger value's dimensions. Custom sizes are readily available. All dimensions are in inches.

METALLIZED MYLAR EPOXY CASE, RADIAL LEAD, RECTANGULAR CAPACITORS



DF3
METALLIZED MYLAR
EPOXY CASE, RADIAL, RECT.
REGULAR SERIES

ORDERING DESCRIPTION

Capacitor, fixed: Metallized Mylar dielectric; extended foil construction; tin-plated copper-clad steel wire axial leads; encased in a molded epoxy/plastic shell with epoxy fill.

APPLICATION NOTES

Epoxy Case capacitors are not intended for exposure to high humidity conditions over extended periods of time. For stringent environmental conditions, Epoxy Case capacitors should be used in encapsulated or hermetically sealed circuitry.

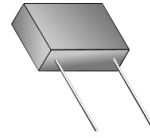
SELECTION AND ORDERING TABLES

Select voltage rating, capacitance and tolerance, read Part Number to the right.

| MFD | 35VDC 20VAC | | | | 50VDC 40VAC | | | | 100VDC 70VAC | | | | 200VDC 120VAC | | | | |
|-------|-------------|--------|--------|----------|-------------|--------|--------|----------|--------------|--------|--------|----------|---------------|--------|--------|----------|--------|
| | RATING | T | H | L | PART # | T | H | L | PART # | T | H | L | PART # | T | H | L | PART # |
| | ± .01" | ± .01" | ± .01" | | ± .01" | ± .01" | ± .01" | | ± .01" | ± .01" | ± .01" | | ± .01" | ± .01" | ± .01" | | ± .01" |
| .001 | .18 | .30 | .42 | DF3S102K | .18 | .30 | .42 | DF3C102K | .18 | .30 | .42 | DF3D102K | .18 | .30 | .42 | DF3E102K | |
| .0012 | .18 | .30 | .42 | DF3S122K | .18 | .30 | .42 | DF3C122K | .18 | .30 | .42 | DF3D122K | .18 | .30 | .42 | DF3E122K | |
| .0018 | .18 | .30 | .42 | DF3S182K | .18 | .30 | .42 | DF3C182K | .18 | .30 | .42 | DF3D182K | .18 | .30 | .42 | DF3E182K | |
| .0022 | .18 | .30 | .42 | DF3S222K | .18 | .30 | .42 | DF3C222K | .18 | .30 | .42 | DF3D222K | .18 | .30 | .42 | DF3E222K | |
| .0027 | .18 | .30 | .42 | DF3S272K | .18 | .30 | .42 | DF3C272K | .18 | .30 | .42 | DF3D272K | .18 | .30 | .42 | DF3E272K | |
| .0033 | .18 | .30 | .42 | DF3S332K | .18 | .30 | .42 | DF3C332K | .18 | .30 | .42 | DF3D332K | .18 | .30 | .42 | DF3E332K | |
| .0047 | .18 | .30 | .42 | DF3S472K | .18 | .30 | .42 | DF3C472K | .18 | .30 | .42 | DF3D472K | .18 | .30 | .42 | DF3E472K | |
| .0056 | .18 | .30 | .42 | DF3S562K | .18 | .30 | .42 | DF3C562K | .18 | .30 | .42 | DF3D562K | .18 | .30 | .42 | DF3E562K | |
| .0068 | .18 | .30 | .42 | DF3S682K | .18 | .30 | .42 | DF3C682K | .18 | .30 | .42 | DF3D682K | .18 | .30 | .42 | DF3E682K | |
| .0082 | .18 | .30 | .42 | DF3S822K | .18 | .30 | .42 | DF3C822K | .18 | .30 | .42 | DF3D822K | .18 | .30 | .42 | DF3E822K | |
| .01 | .18 | .30 | .42 | DF3S103K | .18 | .30 | .42 | DF3C103K | .18 | .30 | .42 | DF3D103K | .18 | .30 | .42 | DF3E103K | |
| .012 | .18 | .30 | .42 | DF3S123K | .18 | .30 | .42 | DF3C123K | .18 | .30 | .42 | DF3D123K | .18 | .30 | .42 | DF3E123K | |
| .015 | .18 | .30 | .42 | DF3S153K | .18 | .30 | .42 | DF3C153K | .18 | .30 | .42 | DF3D153K | .18 | .30 | .42 | DF3E153K | |
| .018 | .18 | .30 | .42 | DF3S183K | .18 | .30 | .42 | DF3C183K | .18 | .30 | .42 | DF3D183K | .18 | .30 | .42 | DF3E183K | |
| .022 | .18 | .30 | .42 | DF3S223K | .18 | .30 | .42 | DF3C223K | .18 | .30 | .42 | DF3D223K | .18 | .30 | .42 | DF3E223K | |
| .027 | .18 | .30 | .42 | DF3S273K | .18 | .30 | .42 | DF3C273K | .18 | .30 | .42 | DF3D273K | .18 | .30 | .55 | DF3E273K | |
| .033 | .18 | .30 | .42 | DF3S333K | .18 | .30 | .42 | DF3C333K | .18 | .30 | .42 | DF3D333K | .18 | .30 | .55 | DF3E333K | |
| .039 | .18 | .30 | .42 | DF3S393K | .18 | .30 | .42 | DF3C393K | .18 | .30 | .42 | DF3D393K | .18 | .30 | .55 | DF3E393K | |
| .047 | .18 | .30 | .42 | DF3S473K | .18 | .30 | .42 | DF3C473K | .18 | .30 | .42 | DF3D473K | .24 | .37 | .55 | DF3E473K | |
| .056 | .18 | .30 | .42 | DF3S563K | .18 | .30 | .42 | DF3C563K | .18 | .30 | .55 | DF3D563K | .24 | .37 | .55 | DF3E563K | |
| .068 | .18 | .30 | .42 | DF3S683K | .18 | .30 | .42 | DF3C683K | .18 | .30 | .55 | DF3D683K | .24 | .37 | .55 | DF3E683K | |
| .082 | .18 | .30 | .42 | DF3S823K | .18 | .30 | .42 | DF3C823K | .18 | .30 | .55 | DF3D823K | .24 | .37 | .55 | DF3E823K | |
| .10 | .18 | .30 | .42 | DF3S104K | .18 | .30 | .42 | DF3C104K | .18 | .30 | .55 | DF3D104K | .30 | .43 | .55 | DF3E104K | |
| .12 | .18 | .30 | .42 | DF3S124K | .18 | .30 | .42 | DF3C124K | .18 | .30 | .55 | DF3D124K | .30 | .43 | .55 | DF3E124K | |
| .15 | .18 | .30 | .42 | DF3S154K | .18 | .30 | .55 | DF3C154K | .24 | .37 | .55 | DF3D154K | .30 | .43 | .67 | DF3E154K | |
| .18 | .18 | .30 | .42 | DF3S184K | .18 | .30 | .55 | DF3C184K | .24 | .37 | .55 | DF3D184K | .30 | .43 | .67 | DF3E184K | |
| .22 | .18 | .30 | .42 | DF3S224K | .24 | .37 | .55 | DF3C224K | .24 | .37 | .55 | DF3D224K | .30 | .43 | .67 | DF3E224K | |
| .25 | .18 | .30 | .42 | DF3S254K | .24 | .37 | .55 | DF3C254K | .30 | .43 | .55 | DF3D254K | .30 | .43 | .82 | DF3E254K | |
| .27 | .18 | .30 | .42 | DF3S274K | .24 | .37 | .55 | DF3C274K | .30 | .43 | .55 | DF3D274K | .30 | .43 | .82 | DF3E274K | |
| .33 | .18 | .30 | .42 | DF3S334K | .24 | .37 | .55 | DF3C334K | .30 | .43 | .55 | DF3D334K | .40 | .55 | .82 | DF3E334K | |
| .39 | .18 | .30 | .55 | DF3S394K | .24 | .37 | .55 | DF3C394K | .30 | .43 | .67 | DF3D394K | .40 | .55 | .82 | DF3E394K | |
| .47 | .18 | .30 | .55 | DF3S474K | .24 | .37 | .55 | DF3C474K | .30 | .43 | .67 | DF3D474K | .40 | .55 | .82 | DF3E474K | |
| .50 | .18 | .30 | .55 | DF3S504K | .30 | .43 | .55 | DF3C504K | .30 | .43 | .67 | DF3D504K | .40 | .55 | .82 | DF3E504K | |
| .56 | .18 | .30 | .55 | DF3S564K | .30 | .43 | .55 | DF3C564K | .30 | .43 | .67 | DF3D564K | .40 | .55 | 1.04 | DF3E564K | |
| .68 | .24 | .37 | .55 | DF3S684K | .30 | .43 | .55 | DF3C684K | .30 | .43 | .82 | DF3D684K | .40 | .55 | 1.04 | DF3E684K | |
| .75 | .24 | .37 | .55 | DF3S754K | .30 | .43 | .55 | DF3C754K | .30 | .43 | .82 | DF3D754K | .40 | .55 | 1.04 | DF3E754K | |
| .82 | .24 | .37 | .55 | DF3S824K | .30 | .43 | .67 | DF3C824K | .30 | .43 | .82 | DF3D824K | .40 | .55 | 1.24 | DF3E824K | |
| 1.0 | .24 | .37 | .55 | DF3S105K | .30 | .43 | .67 | DF3C105K | .40 | .55 | .82 | DF3D105K | .40 | .55 | 1.24 | DF3E105K | |
| 1.2 | .24 | .37 | .55 | DF3S125K | .40 | .55 | .82 | DF3C125K | .40 | .55 | .82 | DF3D125K | .57 | .73 | 1.75 | DF3E125K | |
| 1.5 | .30 | .43 | .55 | DF3S155K | .40 | .55 | .82 | DF3C155K | .40 | .55 | .82 | DF3D155K | .57 | .73 | 1.75 | DF3E155K | |
| 1.8 | .30 | .43 | .55 | DF3S185K | .40 | .55 | .82 | DF3C185K | .40 | .55 | 1.04 | DF3D185K | .57 | .73 | 1.75 | DF3E185K | |
| 2.0 | .30 | .43 | .55 | DF3S205K | .40 | .55 | .82 | DF3C205K | .40 | .55 | 1.04 | DF3D205K | .57 | .73 | 1.75 | DF3E205K | |
| 3.0 | .30 | .43 | .67 | DF3S305K | .40 | .55 | 1.04 | DF3C305K | .57 | .73 | 1.24 | DF3D305K | .57 | .73 | 1.75 | DF3E305K | |
| 4.0 | .30 | .43 | .82 | DF3S405K | .57 | .73 | 1.24 | DF3C405K | .57 | .73 | 1.24 | DF3D405K | .70 | 1.13 | 1.75 | DF3E405K | |
| 5.0 | .40 | .55 | .82 | DF3S505K | .57 | .73 | 1.24 | DF3C505K | .57 | .73 | 1.24 | DF3D505K | .70 | 1.13 | 1.75 | DF3E505K | |
| 6.0 | .40 | .55 | .82 | DF3S605K | .57 | .73 | 1.24 | DF3C605K | .57 | .73 | 1.75 | DF3D605K | .80 | 1.13 | 1.75 | DF3E605K | |
| 8.0 | .40 | .55 | 1.04 | DF3S805K | .57 | .73 | 1.24 | DF3C805K | .57 | .73 | 1.75 | DF3D805K | .80 | 1.13 | 1.75 | DF3E805K | |
| 10.0 | .40 | .55 | 1.04 | DF3S106K | .57 | .73 | 1.24 | DF3C106K | .70 | 1.13 | 1.75 | DF3D106K | 1.27 | 1.40 | 1.77 | DF3E106K | |
| 12.0 | .57 | .73 | 1.24 | DF3S126K | .57 | .73 | 1.24 | DF3C126K | .70 | 1.13 | 1.75 | DF3D126K | 1.27 | 1.40 | 1.77 | DF3E126K | |
| 15.0 | .57 | .73 | 1.24 | DF3S156K | .57 | .73 | 1.75 | DF3C156K | .70 | 1.13 | 1.75 | DF3D156K | 1.27 | 1.40 | 1.77 | DF3E156K | |
| 18.0 | .57 | .73 | 1.24 | DF3S186K | .70 | 1.13 | 1.75 | DF3C186K | .80 | 1.13 | 1.75 | DF3D186K | | | | | |
| 20.0 | .57 | .73 | 1.24 | DF3S206K | .70 | 1.13 | 1.75 | DF3C206K | .80 | 1.13 | 1.75 | DF3D206K | | | | | |

Note: Replace the last digit **K** with the desired tolerance code from the tolerance table. For an in-between value use the next larger value's dimensions. Custom sizes are readily available. All dimensions are in inches.

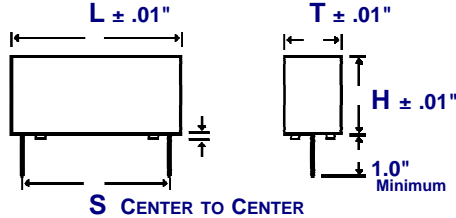
METALLIZED MYLAR EPOXY CASE, RADIAL LEAD, RECTANGULAR CAPACITORS



DF3

METALLIZED MYLAR
EPOXY CASE, RADIAL, RECT.
REGULAR SERIES

DIMENSIONS See tables for specific T, H, L, S values.



** The mounting pads consist of two individual pads on each end or one continuous pad on each end, depending on the mold. (not an option).

WIRE SIZE (Length 1.0" Minimum)

| BODY LENGTH (L) | LEAD SPACING (S) (C to C ± .01") | WIRE SIZE | |
|-----------------|-------------------------------------|-----------|----------|
| | | AWG No. | Diameter |
| .42" | .300" | 22 | 0.025" |
| .55" | .400" | 22 | 0.025" |
| .67" | .500" | 22 | 0.025" |
| .82" | .600" | 22 | 0.025" |
| 1.04" | .800" | 22 | 0.025" |
| 1.24" | 1.100" | 20 | 0.032" |
| 1.75" | 1.600" | 20 | 0.032" |

SELECTION AND ORDERING TABLES Select voltage rating, capacitance and tolerance, read Part Number to the right.

| MFD | 400VDC 160VAC | | | | 600VDC 230VAC | | | | 1000VDC 360VAC | | | | 2000VDC 700VAC | | | |
|-------|---------------|-------------|-------------|-------------|---------------|-------------|-------------|-------------|----------------|-------------|-------------|-------------|----------------|-------------|-------------|-------------|
| | RATING | T ± .01" | H ± .01" | L ± .01" | PART # | T ± .01" | H ± .01" | L ± .01" | PART # | T ± .01" | H ± .01" | L ± .01" | PART # | T ± .01" | H ± .01" | L ± .01" |
| .001 | .18 | .30 | .42 | DF3G102K | .18 | .30 | .42 | DF3J102K | .40 | .55 | 1.04 | DF3M102K | .40 | .55 | 1.04 | DF3R102K |
| .0012 | .18 | .30 | .42 | DF3G122K | .18 | .30 | .42 | DF3J122K | .40 | .55 | 1.04 | DF3M122K | .40 | .55 | 1.04 | DF3R122K |
| .0015 | .18 | .30 | .42 | DF3G152K | .18 | .30 | .42 | DF3J152K | .40 | .55 | 1.04 | DF3M152K | .40 | .55 | 1.04 | DF3R152K |
| .0018 | .18 | .30 | .42 | DF3G182K | .18 | .30 | .42 | DF3J182K | .40 | .55 | 1.04 | DF3M182K | .40 | .55 | 1.04 | DF3R182K |
| .0022 | .18 | .30 | .42 | DF3G222K | .18 | .30 | .42 | DF3J222K | .40 | .55 | 1.04 | DF3M222K | .40 | .55 | 1.04 | DF3R222K |
| .0027 | .18 | .30 | .42 | DF3G272K | .18 | .30 | .42 | DF3J272K | .40 | .55 | 1.04 | DF3M272K | .40 | .55 | 1.04 | DF3R272K |
| .0033 | .18 | .30 | .42 | DF3G332K | .18 | .30 | .42 | DF3J332K | .40 | .55 | 1.04 | DF3M332K | .40 | .55 | 1.04 | DF3R332K |
| .0039 | .18 | .30 | .42 | DF3G392K | .18 | .30 | .42 | DF3J392K | .40 | .55 | 1.04 | DF3M392K | .40 | .55 | 1.04 | DF3R392K |
| .0047 | .18 | .30 | .42 | DF3G472K | .18 | .30 | .42 | DF3J472K | .40 | .55 | 1.04 | DF3M472K | .40 | .55 | 1.04 | DF3R472K |
| .0056 | .18 | .30 | .42 | DF3G562K | .18 | .30 | .42 | DF3J562K | .40 | .55 | 1.04 | DF3M562K | .40 | .55 | 1.04 | DF3R562K |
| .0068 | .18 | .30 | .42 | DF3G682K | .18 | .30 | .55 | DF3J682K | .40 | .55 | 1.04 | DF3M682K | .40 | .55 | 1.04 | DF3R682K |
| .0082 | .18 | .30 | .42 | DF3G822K | .18 | .30 | .55 | DF3J822K | .40 | .55 | 1.04 | DF3M822K | .40 | .55 | 1.04 | DF3R822K |
| .01 | .18 | .30 | .55 | DF3G103K | .18 | .30 | .55 | DF3J103K | .40 | .55 | 1.04 | DF3M103K | .57 | .73 | 1.24 | DF3R103K |
| .012 | .18 | .30 | .55 | DF3G123K | .24 | .37 | .55 | DF3J123K | .40 | .55 | 1.04 | DF3M123K | .57 | .73 | 1.24 | DF3R123K |
| .015 | .18 | .30 | .55 | DF3G153K | .24 | .37 | .55 | DF3J153K | .40 | .55 | 1.04 | DF3M153K | .57 | .73 | 1.24 | DF3R153K |
| .018 | .18 | .30 | .55 | DF3G183K | .24 | .37 | .55 | DF3J183K | .40 | .55 | 1.04 | DF3M183K | .57 | .73 | 1.24 | DF3R183K |
| .022 | .18 | .30 | .55 | DF3G223K | .30 | .43 | .55 | DF3J223K | .40 | .55 | 1.04 | DF3M223K | .57 | .73 | 1.75 | DF3R223K |
| .027 | .24 | .37 | .55 | DF3G273K | .30 | .43 | .55 | DF3J273K | .40 | .55 | 1.04 | DF3M273K | .57 | .73 | 1.75 | DF3R273K |
| .033 | .24 | .37 | .55 | DF3G333K | .30 | .43 | .67 | DF3J333K | .40 | .55 | 1.04 | DF3M333K | .57 | .73 | 1.75 | DF3R333K |
| .039 | .24 | .37 | .55 | DF3G393K | .30 | .43 | .67 | DF3J393K | .40 | .55 | 1.04 | DF3M393K | .57 | .73 | 1.75 | DF3R393K |
| .047 | .30 | .43 | .55 | DF3G473K | .30 | .43 | .67 | DF3J473K | .57 | .73 | 1.24 | DF3M473K | .70 | 1.13 | 1.75 | DF3R473K |
| .056 | .30 | .43 | .55 | DF3G563K | .30 | .43 | .82 | DF3J563K | .57 | .73 | 1.24 | DF3M563K | .70 | 1.13 | 1.75 | DF3R563K |
| .068 | .30 | .43 | .55 | DF3G683K | .30 | .43 | .82 | DF3J683K | .57 | .73 | 1.24 | DF3M683K | .70 | 1.13 | 1.75 | DF3R683K |
| .082 | .30 | .43 | .67 | DF3G823K | .40 | .55 | .82 | DF3J823K | .57 | .73 | 1.24 | DF3M823K | .70 | 1.13 | 1.75 | DF3R823K |
| .10 | .30 | .43 | .67 | DF3G104K | .40 | .55 | .82 | DF3J104K | .70 | .94 | 1.24 | DF3M104K | .70 | 1.13 | 1.75 | DF3R104K |
| .12 | .30 | .43 | .82 | DF3G124K | .40 | .55 | .82 | DF3J124K | .70 | .94 | 1.24 | DF3M124K | .70 | 1.13 | 1.75 | DF3R124K |
| .15 | .30 | .43 | .82 | DF3G154K | .40 | .55 | 1.04 | DF3J154K | .70 | .94 | 1.24 | DF3M154K | .80 | 1.13 | 1.75 | DF3R154K |
| .18 | .40 | .55 | .82 | DF3G184K | .40 | .55 | 1.04 | DF3J184K | .57 | .73 | 1.75 | DF3M184K | .80 | 1.13 | 1.75 | DF3R184K |
| .22 | .40 | .55 | .82 | DF3G224K | .40 | .55 | 1.24 | DF3J224K | .57 | .73 | 1.75 | DF3M224K | 1.27 | 1.40 | 1.77 | DF3R224K |
| .25 | .40 | .55 | .82 | DF3G254K | .57 | .73 | 1.24 | DF3J254K | .57 | .73 | 1.75 | DF3M254K | 1.27 | 1.40 | 1.77 | DF3R254K |
| .27 | .40 | .55 | .82 | DF3G274K | .57 | .73 | 1.24 | DF3J274K | .57 | .73 | 1.75 | DF3M274K | 1.27 | 1.40 | 1.77 | DF3R274K |
| .33 | .40 | .55 | 1.04 | DF3G334K | .57 | .73 | 1.24 | DF3J334K | .70 | 1.13 | 1.75 | DF3M334K | 1.27 | 1.40 | 1.77 | DF3R334K |
| .39 | .40 | .55 | 1.24 | DF3G394K | .57 | .73 | 1.24 | DF3J394K | .70 | 1.13 | 1.75 | DF3M394K | | | | |
| .47 | .40 | .55 | 1.24 | DF3G474K | .57 | .73 | 1.24 | DF3J474K | .70 | 1.13 | 1.75 | DF3M474K | | | | |
| .50 | .40 | .55 | 1.24 | DF3G504K | .57 | .73 | 1.24 | DF3J504K | .70 | 1.13 | 1.75 | DF3M504K | | | | |
| .56 | .57 | .73 | 1.24 | DF3G564K | .57 | .73 | 1.75 | DF3J564K | .70 | 1.13 | 1.75 | DF3M564K | | | | |
| .68 | .57 | .73 | 1.24 | DF3G684K | .57 | .73 | 1.75 | DF3J684K | .80 | 1.13 | 1.75 | DF3M684K | | | | |
| .75 | .57 | .73 | 1.24 | DF3G754K | .57 | .73 | 1.75 | DF3J754K | .80 | 1.13 | 1.75 | DF3M754K | | | | |
| .82 | .57 | .73 | 1.24 | DF3G824K | .70 | 1.13 | 1.75 | DF3J824K | 1.27 | 1.40 | 1.77 | DF3M824K | | | | |
| 1.0 | .57 | .73 | 1.24 | DF3G105K | .70 | 1.13 | 1.75 | DF3J105K | 1.27 | 1.40 | 1.77 | DF3M105K | | | | |
| 1.2 | .57 | .73 | 1.75 | DF3G125K | .70 | 1.13 | 1.75 | DF3J125K | 1.27 | 1.40 | 1.77 | DF3M125K | | | | |
| 1.5 | .57 | .73 | 1.75 | DF3G155K | .70 | 1.13 | 1.75 | DF3J155K | 1.27 | 1.40 | 1.77 | DF3M155K | | | | |
| 1.8 | .70 | 1.13 | 1.75 | DF3G185K | .80 | 1.13 | 1.75 | DF3J185K | | | | | | | | |
| 2.0 | .70 | 1.13 | 1.75 | DF3G205K | .80 | 1.13 | 1.75 | DF3J205K | | | | | | | | |
| 3.0 | .70 | 1.13 | 1.75 | DF3G305K | 1.27 | 1.40 | 1.77 | DF3J305K | | | | | | | | |
| 4.0 | .80 | 1.13 | 1.75 | DF3G405K | 1.27 | 1.40 | 1.77 | DF3J405K | | | | | | | | |
| 5.0 | 1.27 | 1.40 | 1.77 | DF3G505K | | | | | | | | | | | | |
| 6.0 | 1.27 | 1.40 | 1.77 | DF3G605K | | | | | | | | | | | | |
| 8.0 | 1.27 | 1.40 | 1.77 | DF3G805K | | | | | | | | | | | | |
| 10.0 | 1.27 | 1.40 | 1.77 | DF3G106K | | | | | | | | | | | | |

TOLERANCE TABLE

| Code | Tolerance |
|------|-----------|
| A | ± 0.1% ♦ |
| B | ± 0.25% ♦ |
| D | ± 0.5% ♦ |
| F | ± 1% ♦ |
| G | ± 2% ♦ |
| H | ± 3% ♦ |
| J | ± 5% |
| K | ± 10% |
| M | ± 20% |
| N | ± 30% |
| P | GMV |
| S | -10% +30% |
| T | -10% +50% |
| V | -10% +20% |
| X | Special |

♦ Temperature Stabilized

Note: Replace the last digit **K** with the desired tolerance code from the tolerance table. For an in-between value use the next larger value's dimensions. Custom sizes are readily available. All dimensions are in inches.

METALLIZED MYLAR CAPACITORS FEED THROUGH, ROUND SKIN TIGHT PLASTIC WRAP, WITH SOLDERABLE ENDS



DQ3
METALLIZED MYLAR
FEED THROUGH, ROUND
REGULAR SERIES

ORDERING DESCRIPTION

Capacitor, fixed: Metallized Mylar dielectric; extended foil construction; Feed Through; encased in skin-tight plastic wrap, with solderable ends. Capacitors are wound on hollow cores for wire or stud insertion through the center axis of the capacitor. In addition to the standard Tape, New Flame Retardant Tape is available meeting UL 510 Flame Retardant Specifications.

APPLICATION NOTES

These tables are intended to give the engineer a starting point for ordering custom sizes and values. Standard core sizes are .120, .250, .375, .500, .625, .750" I.D., other core sizes are available. Custom configurations are the norm for feed through capacitors. Please do not hesitate to specify your unique requirements, specify capacitance, tolerance, voltage, maximum length, maximum diameter, minimum I.D. of core, core material and core extension. For UL 510 Flame Retardant Tape add -R to the end of the Part Number.

SELECTION AND ORDERING TABLES Select voltage rating, capacitance and tolerance, read Part Number to the right.

| MFD | 100VDC 70VAC | | | | 200VDC 120VAC | | | | 400VDC 160VAC | | | | 600VDC 230VAC | | | |
|---|--------------|--------|--------|-----------|---------------|--------|--------|-----------|---------------|--------|--------|-----------|---------------|--------|--------|-----------|
| | I | D | L | PART # | I | D | L | PART # | I | D | L | PART # | I | D | L | PART # |
| RATING | ± .05" | + .05" | ± .07" | | ± .05" | + .05" | ± .07" | | ± .05" | + .05" | ± .07" | | ± .05" | + .05" | ± .07" | |
| Teflon Tube Core .120" I.D. x .130" O.D. CORE CODE 1 | | | | | | | | | | | | | | | | |
| .01 | .12 | .45 | .32 | DQ31D103K | .12 | .45 | .32 | DQ31E103K | .12 | .45 | .32 | DQ31G103K | .12 | .45 | .32 | DQ31J103K |
| .015 | .12 | .45 | .32 | DQ31D153K | .12 | .45 | .32 | DQ31E153K | .12 | .45 | .32 | DQ31G153K | .12 | .45 | .32 | DQ31J153K |
| .027 | .12 | .45 | .32 | DQ31D273K | .12 | .45 | .32 | DQ31E273K | .12 | .45 | .32 | DQ31G273K | .12 | .45 | .32 | DQ31J273K |
| .033 | .12 | .45 | .32 | DQ31D333K | .12 | .45 | .32 | DQ31E333K | .12 | .45 | .32 | DQ31G333K | .12 | .45 | .32 | DQ31J333K |
| .047 | .12 | .45 | .32 | DQ31D473K | .12 | .45 | .32 | DQ31E473K | .12 | .45 | .32 | DQ31G473K | .12 | .53 | .32 | DQ31J473K |
| .056 | .12 | .45 | .32 | DQ31D563K | .12 | .45 | .32 | DQ31E563K | .12 | .45 | .32 | DQ31G563K | .12 | .56 | .32 | DQ31J563K |
| .068 | .12 | .45 | .32 | DQ31D683K | .12 | .45 | .32 | DQ31E683K | .12 | .45 | .32 | DQ31G683K | .12 | .62 | .32 | DQ31J683K |
| .082 | .12 | .45 | .32 | DQ31D823K | .12 | .45 | .32 | DQ31E823K | .12 | .47 | .32 | DQ31G823K | .12 | .48 | .45 | DQ31J823K |
| .10 | .12 | .45 | .32 | DQ31D104K | .12 | .45 | .32 | DQ31E104K | .12 | .51 | .32 | DQ31G104K | .12 | .53 | .45 | DQ31J104K |
| .15 | .12 | .45 | .32 | DQ31D154K | .12 | .47 | .32 | DQ31E154K | .12 | .61 | .32 | DQ31G154K | .12 | .63 | .45 | DQ31J154K |
| .22 | .12 | .45 | .32 | DQ31D224K | .12 | .56 | .32 | DQ31E224K | .12 | .52 | .45 | DQ31G224K | .12 | .75 | .45 | DQ31J224K |
| .27 | .12 | .45 | .32 | DQ31D274K | .12 | .62 | .32 | DQ31E274K | .12 | .56 | .45 | DQ31G274K | .12 | .83 | .45 | DQ31J274K |
| .33 | .12 | .45 | .32 | DQ31D334K | .12 | .48 | .45 | DQ31E334K | .12 | .62 | .45 | DQ31G334K | .12 | .75 | .57 | DQ31J334K |
| .47 | .12 | .48 | .32 | DQ31D474K | .12 | .56 | .45 | DQ31E474K | .12 | .74 | .45 | DQ31G474K | .12 | .89 | .57 | DQ31J474K |
| .56 | .12 | .53 | .32 | DQ31D564K | .12 | .61 | .45 | DQ31E564K | .12 | .79 | .45 | DQ31G564K | .12 | .95 | .57 | DQ31J564K |
| .68 | .12 | .58 | .32 | DQ31D684K | .12 | .67 | .45 | DQ31E684K | .12 | .71 | .57 | DQ31G684K | .12 | 1.06 | .57 | DQ31J684K |
| .82 | .12 | .63 | .32 | DQ31D824K | .12 | .72 | .45 | DQ31E824K | .12 | .78 | .57 | DQ31G824K | .12 | 1.00 | .70 | DQ31J824K |
| 1.0 | .12 | .48 | .45 | DQ31D105K | .12 | .81 | .45 | DQ31E105K | .12 | .86 | .57 | DQ31G105K | .12 | 1.10 | .70 | DQ31J105K |
| 1.5 | .12 | .59 | .45 | DQ31D155K | .12 | .79 | .57 | DQ31E155K | .12 | 1.05 | .57 | DQ31G155K | .12 | 1.19 | .82 | DQ31J155K |
| 2.0 | .12 | .67 | .45 | DQ31D205K | .12 | .91 | .57 | DQ31E205K | .12 | 1.04 | .70 | DQ31G205K | .12 | 1.35 | .82 | DQ31J205K |
| Paper Tube Core .250" I.D. x .315" O.D. CORE CODE 2 | | | | | | | | | | | | | | | | |
| .10 | .25 | .62 | .32 | DQ32D104K | .25 | .62 | .32 | DQ32E104K | .25 | .62 | .32 | DQ32G104K | .25 | .81 | .32 | DQ32J104K |
| .12 | .25 | .62 | .32 | DQ32D124K | .25 | .62 | .32 | DQ32E124K | .25 | .63 | .32 | DQ32G124K | .25 | .86 | .32 | DQ32J124K |
| .15 | .25 | .62 | .32 | DQ32D154K | .25 | .62 | .32 | DQ32E154K | .25 | .69 | .32 | DQ32G154K | .25 | .96 | .32 | DQ32J154K |
| .18 | .25 | .62 | .32 | DQ32D184K | .25 | .62 | .32 | DQ32E184K | .25 | .74 | .32 | DQ32G184K | .25 | .75 | .45 | DQ32J184K |
| .22 | .25 | .62 | .32 | DQ32D224K | .25 | .64 | .32 | DQ32E224K | .25 | .79 | .32 | DQ32G224K | .25 | .82 | .45 | DQ32J224K |
| .27 | .25 | .62 | .32 | DQ32D274K | .25 | .69 | .32 | DQ32E274K | .25 | .86 | .32 | DQ32G274K | .25 | .89 | .45 | DQ32J274K |
| .33 | .25 | .63 | .32 | DQ32D334K | .25 | .75 | .32 | DQ32E334K | .25 | .94 | .32 | DQ32G334K | .25 | .97 | .45 | DQ32J334K |
| .47 | .25 | .64 | .32 | DQ32D474K | .25 | .86 | .32 | DQ32E474K | .25 | .81 | .45 | DQ32G474K | .25 | .93 | .57 | DQ32J474K |
| .56 | .25 | .65 | .32 | DQ32D564K | .25 | .92 | .32 | DQ32E564K | .25 | .86 | .45 | DQ32G564K | .25 | 1.01 | .57 | DQ32J564K |
| .68 | .25 | .66 | .32 | DQ32D684K | .25 | .74 | .45 | DQ32E684K | .25 | .93 | .45 | DQ32G684K | .25 | 1.10 | .57 | DQ32J684K |
| .82 | .25 | .70 | .32 | DQ32D824K | .25 | .79 | .45 | DQ32E824K | .25 | 1.01 | .45 | DQ32G824K | .25 | 1.19 | .57 | DQ32J824K |
| 1.0 | .25 | .76 | .32 | DQ32D105K | .25 | .86 | .45 | DQ32E105K | .25 | .91 | .57 | DQ32G105K | .25 | 1.14 | .70 | DQ32J105K |
| 1.2 | .25 | .82 | .32 | DQ32D125K | .25 | .93 | .45 | DQ32E125K | .25 | .99 | .57 | DQ32G125K | .25 | 1.23 | .70 | DQ32J125K |
| 1.5 | .25 | .89 | .32 | DQ32D155K | .25 | 1.02 | .45 | DQ32E155K | .25 | 1.09 | .57 | DQ32G155K | .25 | 1.35 | .70 | DQ32J155K |
| 2.0 | .25 | .74 | .45 | DQ32D205K | .25 | .97 | .57 | DQ32E205K | .25 | 1.23 | .57 | DQ32G205K | .25 | 1.38 | .82 | DQ32J205K |
| 3.0 | .25 | .86 | .45 | DQ32D305K | .25 | 1.15 | .57 | DQ32E305K | .25 | 1.29 | .70 | DQ32G305K | .25 | 1.64 | .82 | DQ32J305K |
| Phenolic Tube Core .500" I.D. x .625" O.D. CORE CODE 5 | | | | | | | | | | | | | | | | |
| 1.0 | .50 | 1.06 | .32 | DQ35D105K | .50 | 1.35 | .32 | DQ35E105K | .50 | 1.25 | .45 | DQ35G105K | .50 | 1.41 | .57 | DQ35J105K |
| 1.2 | .50 | 1.06 | .32 | DQ35D125K | .50 | 1.44 | .32 | DQ35E125K | .50 | 1.32 | .45 | DQ35G125K | .50 | 1.50 | .57 | DQ35J125K |
| 1.5 | .50 | 1.08 | .32 | DQ35D155K | .50 | 1.19 | .45 | DQ35E155K | .50 | 1.24 | .57 | DQ35G155K | .50 | 1.46 | .70 | DQ35J155K |
| 2.0 | .50 | 1.18 | .32 | DQ35D205K | .50 | 1.29 | .45 | DQ35E205K | .50 | 1.36 | .57 | DQ35G205K | .50 | 1.63 | .70 | DQ35J205K |
| 3.0 | .50 | 1.07 | .45 | DQ35D305K | .50 | 1.29 | .57 | DQ35E305K | .50 | 1.56 | .57 | DQ35G305K | .50 | 1.74 | .82 | DQ35J305K |
| 4.0 | .50 | 1.16 | .45 | DQ35D405K | .50 | 1.41 | .57 | DQ35E405K | .50 | 1.56 | .70 | DQ35G405K | .50 | 1.95 | .82 | DQ35J405K |
| 5.0 | .50 | 1.23 | .45 | DQ35D505K | .50 | 1.53 | .57 | DQ35E505K | .50 | 1.69 | .70 | DQ35G505K | .50 | 1.86 | 1.07 | DQ35J505K |
| 6.0 | .50 | 1.30 | .45 | DQ35D605K | .50 | 1.47 | .70 | DQ35E605K | .50 | 1.66 | .82 | DQ35G605K | .50 | 2.00 | 1.07 | DQ35J605K |
| 8.0 | .50 | 1.25 | .57 | DQ35D805K | .50 | 1.63 | .70 | DQ35E805K | .50 | 1.86 | .82 | DQ35G805K | .50 | 2.25 | 1.07 | DQ35J805K |
| 10.0 | .50 | 1.34 | .57 | DQ35D106K | .50 | 1.77 | .82 | DQ35E106K | .50 | 1.77 | 1.07 | DQ35G106K | .50 | 2.04 | 1.57 | DQ35J106K |

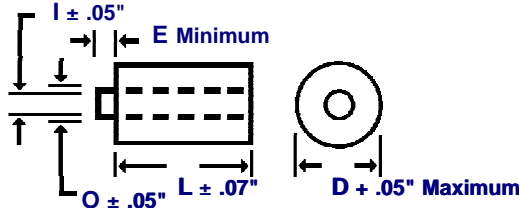
Note: Replace the last digit **K** with the desired tolerance code from the tolerance table. For an in-between value use the next larger value's dimensions. Custom sizes are readily available. All dimensions are in inches. All +.05" dimension tolerances are Maximum.

METALLIZED MYLAR CAPACITORS FEED THROUGH, ROUND SKIN TIGHT PLASTIC WRAP, WITH SOLDERABLE ENDS



DQ3
METALLIZED MYLAR
FEED THROUGH, ROUND
REGULAR SERIES

DIMENSIONS See tables for specific I, O, E, D, L values.



CORE INFORMATION

| CORE TYPE | P/N CODE | CORE (E) EXTENSION | CORE SIZE | |
|---------------|----------|--------------------|-----------|-----------|
| | | | I. D. (I) | O. D. (O) |
| Teflon Tube | 1 | .125" Minimum | .120" | 0.130" |
| Kraft Paper | 2 | .187" Minimum | .250" | 0.315" |
| Kraft Paper | 3 | .187" Minimum | .375" | 0.440" |
| Phenolic Tube | 4 | .187" Minimum | .375" | 0.500" |
| Phenolic Tube | 5 | .187" Minimum | .500" | 0.625" |
| Phenolic Tube | 6 | .187" Minimum | .625" | 0.750" |
| Phenolic Tube | 7 | .187" Minimum | .750" | 1.062" |

SELECTION AND ORDERING TABLES Select voltage rating, capacitance and tolerance, read Part Number to the right.

| MFD | 800VDC 300VAC | | | | 1000VDC 360VAC | | | | 2000VDC 700VAC | | | |
|---|---------------|--------|--------|-----------|----------------|--------|--------|-----------|----------------|--------|--------|-----------|
| | I | D | L | PART # | I | D | L | PART # | I | D | L | PART # |
| RATING | ± .05" | + .05" | ± .07" | | ± .05" | + .05" | ± .07" | | ± .05" | + .05" | ± .07" | |
| Teflon Tube Core .120" I.D. x .130" O.D. CORE CODE 1 | | | | | | | | | | | | |
| .01 | .12 | .45 | .57 | DQ31L103K | .12 | .43 | .82 | DQ31M103K | .12 | .43 | .82 | DQ31R103K |
| .015 | .12 | .45 | .57 | DQ31L153K | .12 | .46 | .82 | DQ31M153K | .12 | .52 | .82 | DQ31R153K |
| .027 | .12 | .45 | .57 | DQ31L273K | .12 | .46 | .82 | DQ31M273K | .12 | .67 | .82 | DQ31R273K |
| .033 | .12 | .45 | .57 | DQ31L333K | .12 | .46 | .82 | DQ31M333K | .12 | .74 | .82 | DQ31R333K |
| .047 | .12 | .49 | .57 | DQ31L473K | .12 | .46 | .82 | DQ31M473K | .12 | .87 | .82 | DQ31R473K |
| .056 | .12 | .54 | .57 | DQ31L563K | .12 | .49 | .82 | DQ31M563K | .12 | .94 | .82 | DQ31R563K |
| .068 | .12 | .59 | .57 | DQ31L683K | .12 | .54 | .82 | DQ31M683K | .12 | 1.05 | .82 | DQ31R683K |
| .082 | .12 | .64 | .57 | DQ31L823K | .12 | .59 | .82 | DQ31M823K | .12 | 1.14 | .82 | DQ31R823K |
| .10 | .12 | .70 | .57 | DQ31L104K | .12 | .64 | .82 | DQ31M104K | .12 | 1.24 | .82 | DQ31R104K |
| .15 | .12 | .85 | .57 | DQ31L154K | .12 | .78 | .82 | DQ31M154K | .12 | 1.06 | 1.20 | DQ31R154K |
| .22 | .12 | .71 | .82 | DQ31L224K | .12 | .94 | .82 | DQ31M224K | .12 | 1.26 | 1.20 | DQ31R224K |
| .27 | .12 | .78 | .82 | DQ31L274K | .12 | 1.04 | .82 | DQ31M274K | .12 | 1.38 | 1.20 | DQ31R274K |
| .33 | .12 | .86 | .82 | DQ31L334K | .12 | 1.15 | .82 | DQ31M334K | .12 | 1.51 | 1.20 | DQ31R334K |
| .47 | .12 | 1.02 | .82 | DQ31L474K | .12 | 1.34 | .82 | DQ31M474K | .12 | 1.77 | 1.20 | DQ31R474K |
| .56 | .12 | 1.12 | .82 | DQ31L564K | .12 | 1.02 | 1.20 | DQ31M564K | .12 | 1.58 | 1.57 | DQ31R564K |
| .68 | .12 | 1.22 | .82 | DQ31L684K | .12 | 1.13 | 1.20 | DQ31M684K | .12 | 1.72 | 1.57 | DQ31R684K |
| .82 | .12 | 1.32 | .82 | DQ31L824K | .12 | 1.22 | 1.20 | DQ31M824K | .12 | 1.88 | 1.57 | DQ31R824K |
| 1.0 | .12 | 1.20 | 1.07 | DQ31L105K | .12 | 1.34 | 1.20 | DQ31M105K | .12 | 2.06 | 1.57 | DQ31R105K |
| 1.5 | .12 | 1.43 | 1.07 | DQ31L155K | .12 | 1.60 | 1.20 | DQ31M155K | .12 | 1.95 | 2.32 | DQ31R155K |
| 2.0 | .12 | 1.62 | 1.07 | DQ31L205K | .12 | 1.82 | 1.20 | DQ31M205K | .12 | 2.22 | 2.32 | DQ31R205K |
| Paper Tube Core .250" I.D. x .315" O.D. CORE CODE 2 | | | | | | | | | | | | |
| .10 | .25 | .77 | .57 | DQ32L104K | .25 | .72 | .82 | DQ32M104K | .25 | 1.28 | .82 | DQ32R104K |
| .12 | .25 | .83 | .57 | DQ32L124K | .25 | .77 | .82 | DQ32M124K | .25 | 1.38 | .82 | DQ32R124K |
| .15 | .25 | .91 | .57 | DQ32L154K | .25 | .84 | .82 | DQ32M154K | .25 | 1.51 | .82 | DQ32R154K |
| .18 | .25 | .98 | .57 | DQ32L184K | .25 | .91 | .82 | DQ32M184K | .25 | 1.19 | 1.20 | DQ32R184K |
| .22 | .25 | 1.07 | .57 | DQ32L224K | .25 | .99 | .82 | DQ32M224K | .25 | 1.30 | 1.20 | DQ32R224K |
| .27 | .25 | 1.17 | .57 | DQ32L274K | .25 | 1.08 | .82 | DQ32M274K | .25 | 1.41 | 1.20 | DQ32R274K |
| .33 | .25 | .92 | .82 | DQ32L334K | .25 | 1.18 | .82 | DQ32M334K | .25 | 1.54 | 1.20 | DQ32R334K |
| .47 | .25 | 1.07 | .82 | DQ32L474K | .25 | 1.37 | .82 | DQ32M474K | .25 | 1.79 | 1.20 | DQ32R474K |
| .56 | .25 | 1.16 | .82 | DQ32L564K | .25 | 1.47 | .82 | DQ32M564K | .25 | 1.94 | 1.20 | DQ32R564K |
| .68 | .25 | 1.25 | .82 | DQ32L684K | .25 | 1.17 | 1.20 | DQ32M684K | .25 | 1.75 | 1.57 | DQ32R684K |
| .82 | .25 | 1.35 | .82 | DQ32L824K | .25 | 1.26 | 1.20 | DQ32M824K | .25 | 1.90 | 1.57 | DQ32R824K |
| 1.0 | .25 | 1.47 | .82 | DQ32L105K | .25 | 1.37 | 1.20 | DQ32M105K | .25 | 2.08 | 1.57 | DQ32R105K |
| 1.2 | .25 | 1.33 | 1.07 | DQ32L125K | .25 | 1.47 | 1.20 | DQ32M125K | .25 | 2.25 | 1.57 | DQ32R125K |
| 1.5 | .25 | 1.45 | 1.07 | DQ32L155K | .25 | 1.62 | 1.20 | DQ32M155K | .25 | 2.50 | 1.57 | DQ32R155K |
| 2.0 | .25 | 1.65 | 1.07 | DQ32L205K | .25 | 1.84 | 1.20 | DQ32M205K | .25 | 2.24 | 2.32 | DQ32R205K |
| 3.0 | .25 | 1.73 | 1.32 | DQ32L305K | .25 | 1.83 | 1.57 | DQ32M305K | .25 | 2.70 | 2.32 | DQ32R305K |
| Phenolic Tube Core .500" I.D. x .625" O.D. CORE CODE 5 | | | | | | | | | | | | |
| .10 | .50 | 1.27 | .57 | DQ35L104K | .50 | 1.21 | .82 | DQ35M104K | .50 | 1.40 | .82 | DQ35R104K |
| .25 | .50 | 1.27 | .57 | DQ35L254K | .50 | 1.21 | .82 | DQ35M254K | .50 | 1.48 | 1.20 | DQ35R254K |
| .50 | .50 | 1.25 | .82 | DQ35L504K | .50 | 1.51 | .82 | DQ35M504K | .50 | 1.93 | 1.20 | DQ35R504K |
| .75 | .50 | 1.42 | .82 | DQ35L754K | .50 | 1.76 | .82 | DQ35M754K | .50 | 2.28 | 1.20 | DQ35R754K |
| 1.0 | .50 | 1.57 | .82 | DQ35L105K | .50 | 1.48 | 1.20 | DQ35M105K | .50 | 2.15 | 1.57 | DQ35R105K |
| 1.2 | .50 | 1.68 | .82 | DQ35L125K | .50 | 1.58 | 1.20 | DQ35M125K | .50 | 2.32 | 1.57 | DQ35R125K |
| 1.5 | .50 | 1.56 | 1.07 | DQ35L155K | .50 | 1.75 | 1.20 | DQ35M155K | .50 | 2.56 | 1.57 | DQ35R155K |
| 2.0 | .50 | 1.74 | 1.07 | DQ35L205K | .50 | 1.93 | 1.20 | DQ35M205K | .50 | 2.31 | 2.32 | DQ35R205K |
| 3.0 | .50 | 2.05 | 1.07 | DQ35L305K | .50 | 2.28 | 1.20 | DQ35M305K | .50 | 2.75 | 2.32 | DQ35R305K |
| 4.0 | .50 | 2.04 | 1.32 | DQ35L405K | .50 | 2.15 | 1.57 | DQ35M405K | .50 | 3.14 | 2.32 | DQ35R405K |

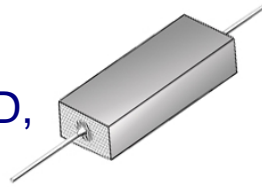
TOLERANCE TABLE

| Code | Tolerance |
|------|-------------|
| A | = ± 0.1% ♦ |
| B | = ± 0.25% ♦ |
| D | = ± 0.5% ♦ |
| F | = ± 1% ♦ |
| G | = ± 2% ♦ |
| H | = ± 3% ♦ |
| J | = ± 5% |
| K | = ± 10% |
| M | = ± 20% |
| N | = ± 30% |
| P | = GMV |
| S | = -10% +30% |
| T | = -10% +50% |
| V | = -10% +20% |
| X | = Special |

♦ Temperature Stabilized

Note: Replace the last digit **K** with the desired tolerance code from the tolerance table. For an in-between value use the next larger value's dimensions. Custom sizes are readily available. All dimensions are in inches. All +.05" dimension tolerances are Maximum.

METALLIZED MYLAR HERMETICALLY SEALED, RECTANGULAR METAL CASED, CAPACITORS



DG3
METALLIZED MYLAR
HERMETIC SEAL, RECTANG.
REGULAR SERIES

ORDERING DESCRIPTION

Capacitor, fixed: Metallized Mylar dielectric; extended foil construction; tin-plated copper-clad steel wire axial leads; encased in a hermetically sealed rectangular tin plated brass tube with soldered glass to metal end seals.

APPLICATION NOTES

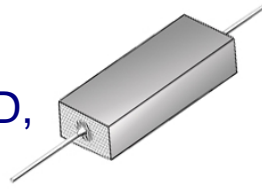
Metal encased capacitors are hermetically sealed and meet the moisture resistance, temperature and immersion cycling requirements of MIL-C-18312.

SELECTION AND ORDERING TABLES Select voltage rating, capacitance and tolerance, read Part Number to the right.

| MFD | 35VDC 20VAC | | | | 50VDC 40VAC | | | | 100VDC 70VAC | | | | 200VDC 120VAC | | | |
|--------|--------------------|--------------------|---------|----------|--------------------|--------------------|---------|----------|--------------------|--------------------|---------|----------|--------------------|--------------------|---------|----------|
| | T | W | L | PART # | T | W | L | PART # | T | W | L | PART # | T | W | L | PART # |
| RATING | + .015" - .005" | + .015" - .005" | ± .031" | | + .015" - .005" | + .015" - .005" | ± .031" | | + .015" - .005" | + .015" - .005" | ± .031" | | + .015" - .005" | + .015" - .005" | ± .031" | |
| .001 | .22 | .34 | .531 | DG3S102K | .22 | .34 | .531 | DG3C102K | .22 | .34 | .563 | DG3D102K | .22 | .34 | .563 | DG3E102K |
| .0015 | .22 | .34 | .531 | DG3S152K | .22 | .34 | .531 | DG3C152K | .22 | .34 | .563 | DG3D152K | .22 | .34 | .563 | DG3E152K |
| .0022 | .22 | .34 | .531 | DG3S222K | .22 | .34 | .531 | DG3C222K | .22 | .34 | .563 | DG3D222K | .22 | .34 | .563 | DG3E222K |
| .0027 | .22 | .34 | .531 | DG3S272K | .22 | .34 | .531 | DG3C272K | .22 | .34 | .563 | DG3D272K | .22 | .34 | .563 | DG3E272K |
| .0033 | .22 | .34 | .531 | DG3S332K | .22 | .34 | .531 | DG3C332K | .22 | .34 | .563 | DG3D332K | .22 | .34 | .563 | DG3E332K |
| .0047 | .22 | .34 | .531 | DG3S472K | .22 | .34 | .531 | DG3C472K | .22 | .34 | .563 | DG3D472K | .22 | .34 | .563 | DG3E472K |
| .0056 | .22 | .34 | .531 | DG3S562K | .22 | .34 | .531 | DG3C562K | .22 | .34 | .563 | DG3D562K | .22 | .34 | .563 | DG3E562K |
| .0068 | .22 | .34 | .531 | DG3S682K | .22 | .34 | .531 | DG3C682K | .22 | .34 | .563 | DG3D682K | .22 | .34 | .563 | DG3E682K |
| .0082 | .22 | .34 | .531 | DG3S822K | .22 | .34 | .531 | DG3C822K | .22 | .34 | .563 | DG3D822K | .22 | .34 | .563 | DG3E822K |
| .01 | .22 | .34 | .531 | DG3S103K | .22 | .34 | .531 | DG3C103K | .22 | .34 | .563 | DG3D103K | .22 | .34 | .688 | DG3E103K |
| .012 | .22 | .34 | .531 | DG3S123K | .22 | .34 | .531 | DG3C123K | .22 | .34 | .563 | DG3D123K | .22 | .34 | .688 | DG3E123K |
| .015 | .22 | .34 | .531 | DG3S153K | .22 | .34 | .531 | DG3C153K | .22 | .34 | .563 | DG3D153K | .22 | .34 | .688 | DG3E153K |
| .018 | .22 | .34 | .531 | DG3S183K | .22 | .34 | .531 | DG3C183K | .22 | .34 | .563 | DG3D183K | .22 | .34 | .688 | DG3E183K |
| .022 | .22 | .34 | .531 | DG3S223K | .22 | .34 | .531 | DG3C223K | .22 | .34 | .563 | DG3D223K | .22 | .34 | .688 | DG3E223K |
| .027 | .22 | .34 | .531 | DG3S273K | .22 | .34 | .531 | DG3C273K | .22 | .34 | .563 | DG3D273K | .22 | .34 | .688 | DG3E273K |
| .033 | .22 | .34 | .531 | DG3S333K | .22 | .34 | .531 | DG3C333K | .22 | .34 | .563 | DG3D333K | .22 | .34 | .688 | DG3E333K |
| .039 | .22 | .34 | .531 | DG3S393K | .22 | .34 | .531 | DG3C393K | .22 | .34 | .563 | DG3D393K | .22 | .34 | .688 | DG3E393K |
| .047 | .22 | .34 | .531 | DG3S473K | .22 | .34 | .531 | DG3C473K | .22 | .34 | .563 | DG3D473K | .22 | .34 | .688 | DG3E473K |
| .056 | .22 | .34 | .531 | DG3S563K | .22 | .34 | .531 | DG3C563K | .22 | .34 | .563 | DG3D563K | .22 | .34 | .688 | DG3E563K |
| .068 | .22 | .34 | .531 | DG3S683K | .22 | .34 | .531 | DG3C683K | .22 | .34 | .563 | DG3D683K | .22 | .34 | .813 | DG3E683K |
| .082 | .22 | .34 | .531 | DG3S823K | .22 | .34 | .531 | DG3C823K | .22 | .34 | .563 | DG3D823K | .22 | .34 | .813 | DG3E823K |
| .10 | .22 | .34 | .531 | DG3S104K | .22 | .34 | .531 | DG3C104K | .22 | .34 | .688 | DG3D104K | .22 | .34 | .813 | DG3E104K |
| .12 | .22 | .34 | .531 | DG3S124K | .22 | .34 | .531 | DG3C124K | .22 | .34 | .688 | DG3D124K | .22 | .34 | .938 | DG3E124K |
| .15 | .22 | .34 | .563 | DG3S154K | .22 | .34 | .625 | DG3C154K | .22 | .34 | .688 | DG3D154K | .22 | .34 | 1.125 | DG3E154K |
| .18 | .22 | .34 | .563 | DG3S184K | .22 | .34 | .625 | DG3C184K | .22 | .34 | .688 | DG3D184K | .22 | .34 | 1.125 | DG3E184K |
| .22 | .22 | .34 | .563 | DG3S224K | .22 | .34 | .625 | DG3C224K | .22 | .34 | .813 | DG3D224K | .31 | .41 | .938 | DG3E224K |
| .25 | .22 | .34 | .563 | DG3S254K | .22 | .34 | .625 | DG3C254K | .22 | .34 | .813 | DG3D254K | .31 | .41 | .938 | DG3E254K |
| .27 | .22 | .34 | .563 | DG3S274K | .22 | .34 | .625 | DG3C274K | .22 | .34 | .813 | DG3D274K | .31 | .41 | .938 | DG3E274K |
| .33 | .22 | .34 | .563 | DG3S334K | .22 | .34 | .625 | DG3C334K | .22 | .34 | .813 | DG3D334K | .31 | .41 | 1.125 | DG3E334K |
| .39 | .22 | .34 | .563 | DG3S394K | .22 | .34 | .625 | DG3C394K | .22 | .34 | .938 | DG3D394K | .31 | .41 | 1.125 | DG3E394K |
| .47 | .22 | .34 | .563 | DG3S474K | .31 | .41 | .625 | DG3C474K | .22 | .34 | 1.125 | DG3D474K | .31 | .41 | 1.313 | DG3E474K |
| .50 | .22 | .34 | .688 | DG3S504K | .31 | .41 | .625 | DG3C504K | .22 | .34 | 1.125 | DG3D504K | .31 | .41 | 1.313 | DG3E504K |
| .56 | .22 | .34 | .688 | DG3S564K | .31 | .41 | .625 | DG3C564K | .22 | .34 | 1.125 | DG3D564K | .40 | .57 | 1.125 | DG3E564K |
| .68 | .22 | .34 | .688 | DG3S684K | .31 | .41 | .625 | DG3C684K | .31 | .41 | .938 | DG3D684K | .40 | .57 | 1.125 | DG3E684K |
| .75 | .22 | .34 | .688 | DG3S754K | .31 | .41 | .625 | DG3C754K | .31 | .41 | .938 | DG3D754K | .40 | .57 | 1.125 | DG3E754K |
| .82 | .22 | .34 | .688 | DG3S824K | .31 | .41 | .781 | DG3C824K | .31 | .41 | .938 | DG3D824K | .40 | .57 | 1.313 | DG3E824K |
| 1.0 | .22 | .34 | .688 | DG3S105K | .31 | .41 | .781 | DG3C105K | .31 | .41 | 1.125 | DG3D105K | .40 | .57 | 1.563 | DG3E105K |
| 1.2 | .22 | .34 | .688 | DG3S125K | .31 | .41 | .906 | DG3C125K | .31 | .41 | 1.313 | DG3D125K | .40 | .57 | 1.813 | DG3E125K |
| 1.5 | .31 | .41 | .688 | DG3S155K | .31 | .41 | .906 | DG3C155K | .31 | .41 | 1.313 | DG3D155K | .40 | .57 | 1.813 | DG3E155K |
| 1.8 | .31 | .41 | .688 | DG3S185K | .40 | .57 | 1.063 | DG3C185K | .40 | .57 | 1.125 | DG3D185K | .50 | .65 | 1.563 | DG3E185K |
| 2.0 | .31 | .41 | .688 | DG3S205K | .40 | .57 | 1.063 | DG3C205K | .40 | .57 | 1.125 | DG3D205K | .50 | .65 | 1.563 | DG3E205K |
| 3.0 | .31 | .41 | .813 | DG3S305K | .40 | .57 | 1.063 | DG3C305K | .40 | .57 | 1.313 | DG3D305K | .50 | .65 | 2.313 | DG3E305K |
| 4.0 | .31 | .41 | .938 | DG3S405K | .50 | .65 | 1.313 | DG3C405K | .50 | .65 | 1.813 | DG3D405K | .60 | .80 | 2.313 | DG3E405K |
| 5.0 | .40 | .57 | .938 | DG3S505K | .50 | .65 | 1.313 | DG3C505K | .50 | .65 | 1.813 | DG3D505K | .60 | .80 | 2.313 | DG3E505K |
| 6.0 | .40 | .57 | .938 | DG3S605K | .50 | .65 | 1.313 | DG3C605K | .50 | .65 | 2.062 | DG3D605K | .60 | .80 | 2.313 | DG3E605K |
| 8.0 | .40 | .57 | 1.125 | DG3S805K | .50 | .65 | 1.313 | DG3C805K | .50 | .65 | 2.062 | DG3D805K | .60 | .80 | 2.313 | DG3E805K |
| 10.0 | .40 | .57 | 1.125 | DG3S106K | .60 | .80 | 1.313 | DG3C106K | .60 | .80 | 2.062 | DG3D106K | .60 | .80 | 2.313 | DG3E106K |
| 12.0 | .40 | .57 | 1.313 | DG3S126K | .60 | .80 | 1.313 | DG3C126K | .60 | .80 | 2.062 | DG3D126K | .60 | .80 | 2.313 | DG3E126K |
| 15.0 | .40 | .57 | 1.313 | DG3S156K | .60 | .80 | 1.781 | DG3C156K | .60 | .80 | 2.313 | DG3D156K | .60 | .80 | 2.313 | DG3E156K |
| 18.0 | .50 | .65 | 1.313 | DG3S186K | | | | | | | | | | | | |
| 20.0 | .50 | .65 | 1.313 | DG3S206K | | | | | | | | | | | | |
| 30.0 | .60 | .80 | 1.313 | DG3S306K | | | | | | | | | | | | |

Note: Replace the last digit **K** with the desired tolerance code from the tolerance table. For an in-between value use the next larger value's dimensions. Custom sizes are readily available. All dimensions are in inches.

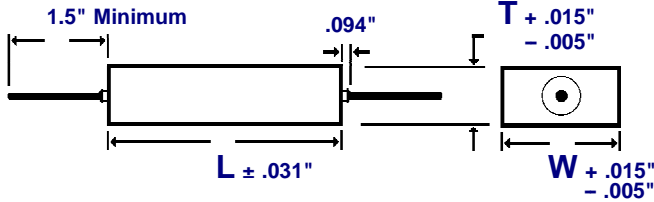
METALLIZED MYLAR HERMETICALLY SEALED, RECTANGULAR METAL CASED, CAPACITORS



DG3
METALLIZED MYLAR
HERMETIC SEAL, RECTANG.
REGULAR SERIES

DIMENSIONS See tables for specific T, W, L values.

WIRE SIZE (Length 1.5" Minimum)



| BODY SIZE (T) x (W) | WIRE SIZE | |
|----------------------|-----------|----------|
| | AWG No. | Diameter |
| .22" x .34" | 24 | 0.020" |
| .31" x .41" | 22 | 0.025" |
| .40" x .57" & Larger | 20 | 0.032" |

SELECTION AND ORDERING TABLES Select voltage rating, capacitance and tolerance, read Part Number to the right.

| MFD | 400VDC 160VAC | | | | 600VDC 230VAC | | | | 1000VDC 360VAC | | | | |
|-------|--------------------|--------------------|---------|----------|--------------------|--------------------|---------|----------|--------------------|--------------------|---------|----------|--------|
| | RATING | T | W | L | PART # | T | W | L | PART # | T | W | L | PART # |
| | + .015" - .005" | + .015" - .005" | ± .031" | | + .015" - .005" | + .015" - .005" | ± .031" | | + .015" - .005" | + .015" - .005" | ± .031" | | |
| .001 | .22 | .34 | .563 | DG3G102K | .22 | .34 | .563 | DG3J102K | .22 | .34 | 1.125 | DG3M102K | |
| .0012 | .22 | .34 | .563 | DG3G122K | .22 | .34 | .563 | DG3J122K | .22 | .34 | 1.125 | DG3M122K | |
| .0015 | .22 | .34 | .563 | DG3G152K | .22 | .34 | .563 | DG3J152K | .22 | .34 | 1.125 | DG3M152K | |
| .0018 | .22 | .34 | .563 | DG3G182K | .22 | .34 | .563 | DG3J182K | .22 | .34 | 1.125 | DG3M182K | |
| .0022 | .22 | .34 | .563 | DG3G222K | .22 | .34 | .563 | DG3J222K | .22 | .34 | 1.125 | DG3M222K | |
| .0027 | .22 | .34 | .563 | DG3G272K | .22 | .34 | .563 | DG3J272K | .22 | .34 | 1.125 | DG3M272K | |
| .0033 | .22 | .34 | .563 | DG3G332K | .22 | .34 | .563 | DG3J332K | .22 | .34 | 1.125 | DG3M332K | |
| .0039 | .22 | .34 | .563 | DG3G392K | .22 | .34 | .563 | DG3J392K | .22 | .34 | 1.125 | DG3M392K | |
| .0047 | .22 | .34 | .563 | DG3G472K | .22 | .34 | .563 | DG3J472K | .22 | .34 | 1.125 | DG3M472K | |
| .0056 | .22 | .34 | .563 | DG3G562K | .22 | .34 | .563 | DG3J562K | .22 | .34 | 1.125 | DG3M562K | |
| .0068 | .22 | .34 | .563 | DG3G682K | .22 | .34 | .563 | DG3J682K | .22 | .34 | 1.125 | DG3M682K | |
| .0082 | .22 | .34 | .563 | DG3G822K | .22 | .34 | .563 | DG3J822K | .22 | .34 | 1.125 | DG3M822K | |
| .01 | .22 | .34 | .688 | DG3G103K | .22 | .34 | .688 | DG3J103K | .22 | .34 | 1.125 | DG3M103K | |
| .012 | .22 | .34 | .688 | DG3G123K | .22 | .34 | .688 | DG3J123K | .31 | .41 | 1.125 | DG3M123K | |
| .015 | .22 | .34 | .688 | DG3G153K | .22 | .34 | .688 | DG3J153K | .31 | .41 | 1.125 | DG3M153K | |
| .018 | .22 | .34 | .688 | DG3G183K | .22 | .34 | .688 | DG3J183K | .31 | .41 | 1.125 | DG3M183K | |
| .022 | .22 | .34 | .688 | DG3G223K | .22 | .34 | .813 | DG3J223K | .31 | .41 | 1.125 | DG3M223K | |
| .027 | .22 | .34 | .688 | DG3G273K | .22 | .34 | .813 | DG3J273K | .40 | .57 | 1.125 | DG3M273K | |
| .033 | .22 | .34 | .688 | DG3G333K | .22 | .34 | .938 | DG3J333K | .40 | .57 | 1.125 | DG3M333K | |
| .039 | .22 | .34 | .813 | DG3G393K | .22 | .34 | 1.125 | DG3J393K | .40 | .57 | 1.125 | DG3M393K | |
| .047 | .22 | .34 | .813 | DG3G473K | .22 | .34 | 1.125 | DG3J473K | .40 | .57 | 1.125 | DG3M473K | |
| .056 | .22 | .34 | .813 | DG3G563K | .31 | .41 | .938 | DG3J563K | .50 | .65 | 1.125 | DG3M563K | |
| .068 | .22 | .34 | .938 | DG3G683K | .31 | .41 | .938 | DG3J683K | .50 | .65 | 1.125 | DG3M683K | |
| .082 | .22 | .34 | 1.125 | DG3G823K | .31 | .41 | 1.125 | DG3J823K | .50 | .65 | 1.500 | DG3M823K | |
| .10 | .22 | .34 | 1.125 | DG3G104K | .31 | .41 | 1.125 | DG3J104K | .50 | .65 | 1.500 | DG3M104K | |
| .12 | .31 | .41 | .938 | DG3G124K | .31 | .41 | 1.313 | DG3J124K | .50 | .65 | 1.500 | DG3M124K | |
| .15 | .31 | .41 | .938 | DG3G154K | .40 | .57 | 1.125 | DG3J154K | .50 | .65 | 1.500 | DG3M154K | |
| .18 | .31 | .41 | 1.125 | DG3G184K | .40 | .57 | 1.125 | DG3J184K | .60 | .80 | 1.500 | DG3M184K | |
| .22 | .31 | .41 | 1.313 | DG3G224K | .40 | .57 | 1.313 | DG3J224K | .60 | .80 | 1.500 | DG3M224K | |
| .25 | .31 | .41 | 1.313 | DG3G254K | .40 | .57 | 1.313 | DG3J254K | .60 | .80 | 1.813 | DG3M254K | |
| .27 | .31 | .41 | 1.313 | DG3G274K | .40 | .57 | 1.313 | DG3J274K | .60 | .80 | 1.813 | DG3M274K | |
| .33 | .40 | .57 | 1.125 | DG3G334K | .40 | .57 | 1.562 | DG3J334K | .60 | .80 | 1.813 | DG3M334K | |
| .39 | .40 | .57 | 1.125 | DG3G394K | .40 | .57 | 1.813 | DG3J394K | .60 | .80 | 2.625 | DG3M394K | |
| .47 | .40 | .57 | 1.313 | DG3G474K | .50 | .65 | 1.562 | DG3J474K | .60 | .80 | 2.625 | DG3M474K | |
| .50 | .40 | .57 | 1.313 | DG3G504K | .50 | .65 | 1.562 | DG3J504K | .60 | .80 | 2.625 | DG3M504K | |
| .56 | .40 | .57 | 1.313 | DG3G564K | .50 | .65 | 1.813 | DG3J564K | .60 | .80 | 2.625 | DG3M564K | |
| .68 | .40 | .57 | 1.563 | DG3G684K | .50 | .65 | 2.062 | DG3J684K | .60 | .80 | 3.375 | DG3M684K | |
| .75 | .40 | .57 | 1.813 | DG3G754K | .50 | .65 | 2.062 | DG3J754K | .60 | .80 | 3.375 | DG3M754K | |
| .82 | .40 | .57 | 1.813 | DG3G824K | .50 | .65 | 2.313 | DG3J824K | .60 | .80 | 3.375 | DG3M824K | |
| 1.0 | .50 | .65 | 1.563 | DG3G105K | .60 | .80 | 2.062 | DG3J105K | | | | | |
| 1.2 | .50 | .65 | 2.063 | DG3G125K | | | | | | | | | |
| 1.5 | .50 | .65 | 2.063 | DG3G155K | | | | | | | | | |
| 1.8 | .60 | .80 | 1.813 | DG3G185K | | | | | | | | | |
| 2.0 | .60 | .80 | 1.813 | DG3G205K | | | | | | | | | |

TOLERANCE TABLE

Code Tolerance

| | |
|---|-------------|
| A | = ± 0.1% ♦ |
| B | = ± 0.25% ♦ |
| D | = ± 0.5% ♦ |
| F | = ± 1% ♦ |
| G | = ± 2% ♦ |
| H | = ± 3% ♦ |
| J | = ± 5% |
| K | = ± 10% |
| M | = ± 20% |
| N | = ± 30% |
| P | = GMV |
| S | = -10% +30% |
| T | = -10% +50% |
| V | = -10% +20% |
| X | = Special |

♦ Temperature Stabilized

HARDWARE

For use with metal tubes. Add the Code number to the end of the Part Number, include the dash ("-").

CODE DESCRIPTION

- 1 = Tangential Bracket
- 2 = Threaded Neck Term.
- 3 = Flat Lug Terminal
- 4 = 90° Lug Terminal
- 5 = Insulating Sleeve
- 6 = Stud Mounting

Add .015" to the capacitors dimensions for the Insulating Sleeve.

Codes may be combined. Example:
- 35 = Flat Lug Terminal with Insulating Sleeve. (Place lower number first)

Note: Replace the last digit **K** with the desired tolerance code from the tolerance table. For an in-between value use the next larger value's dimensions. Custom sizes are readily available. All dimensions are in inches.

METALLIZED MYLAR HERMETICALLY SEALED, ROUND METAL CASED CAPACITORS



DL3
METALLIZED MYLAR
HERMETIC SEAL, ROUND
REGULAR SERIES

ORDERING DESCRIPTION

Capacitor, fixed: Metallized Mylar dielectric; extended foil construction; tin-plated copper-clad steel wire axial leads; encased in a hermetically sealed round tin plated brass tube with soldered glass to metal end seals.

APPLICATION NOTES

Metal encased capacitors are hermetically sealed and meet the moisture resistance, temperature and immersion cycling requirements of MIL-C-18312.

SELECTION AND ORDERING TABLES Select voltage rating, capacitance and tolerance, read Part Number to the right.

| MFD | 35VDC 20VAC | | | 50VDC 40VAC | | | 100VDC 70VAC | | | 200VDC 120VAC | | | |
|-------|--------------------|---------|----------|--------------------|---------|----------|--------------------|---------|----------|--------------------|---------|----------|--------|
| | RATING | D | L | PART # | D | L | PART # | D | L | PART # | D | L | PART # |
| | + .015" - .005" | ± .031" | | + .015" - .005" | ± .031" | | + .015" - .005" | ± .031" | | + .015" - .005" | ± .031" | | |
| .001 | .195 | .531 | DL3S102K | .235 | .531 | DL3C102K | .235 | .531 | DL3D102K | .235 | .531 | DL3E102K | |
| .0027 | .195 | .531 | DL3S272K | .235 | .531 | DL3C272K | .235 | .531 | DL3D272K | .235 | .531 | DL3E272K | |
| .0033 | .195 | .531 | DL3S332K | .235 | .531 | DL3C332K | .235 | .531 | DL3D332K | .235 | .531 | DL3E332K | |
| .0056 | .195 | .531 | DL3S562K | .235 | .531 | DL3C562K | .235 | .531 | DL3D562K | .235 | .531 | DL3E562K | |
| .0068 | .195 | .531 | DL3S682K | .235 | .531 | DL3C682K | .235 | .531 | DL3D682K | .235 | .531 | DL3E682K | |
| .0082 | .195 | .531 | DL3S822K | .235 | .531 | DL3C822K | .235 | .531 | DL3D822K | .235 | .531 | DL3E822K | |
| .01 | .195 | .531 | DL3S103K | .235 | .531 | DL3C103K | .175 | .625 | DL3D103K | .175 | .625 | DL3E103K | |
| .012 | .195 | .531 | DL3S123K | .235 | .531 | DL3C123K | .175 | .625 | DL3D123K | .175 | .625 | DL3E123K | |
| .015 | .195 | .531 | DL3S153K | .235 | .531 | DL3C153K | .175 | .625 | DL3D153K | .175 | .625 | DL3E153K | |
| .018 | .195 | .531 | DL3S183K | .235 | .531 | DL3C183K | .175 | .625 | DL3D183K | .175 | .625 | DL3E183K | |
| .022 | .195 | .531 | DL3S223K | .235 | .531 | DL3C223K | .175 | .625 | DL3D223K | .195 | .625 | DL3E223K | |
| .027 | .195 | .531 | DL3S273K | .235 | .531 | DL3C273K | .175 | .625 | DL3D273K | .235 | .625 | DL3E273K | |
| .033 | .195 | .531 | DL3S333K | .235 | .531 | DL3C333K | .175 | .625 | DL3D333K | .235 | .625 | DL3E333K | |
| .039 | .195 | .531 | DL3S393K | .235 | .531 | DL3C393K | .175 | .625 | DL3D393K | .235 | .625 | DL3E393K | |
| .047 | .195 | .531 | DL3S473K | .235 | .531 | DL3C473K | .175 | .625 | DL3D473K | .235 | .625 | DL3E473K | |
| .056 | .195 | .531 | DL3S563K | .235 | .531 | DL3C563K | .195 | .625 | DL3D563K | .235 | .813 | DL3E563K | |
| .068 | .195 | .531 | DL3S683K | .235 | .531 | DL3C683K | .195 | .625 | DL3D683K | .235 | .813 | DL3E683K | |
| .082 | .195 | .531 | DL3S823K | .235 | .531 | DL3C823K | .235 | .625 | DL3D823K | .312 | .813 | DL3E823K | |
| .10 | .195 | .531 | DL3S104K | .235 | .531 | DL3C104K | .235 | .625 | DL3D104K | .312 | .813 | DL3E104K | |
| .12 | .195 | .531 | DL3S124K | .235 | .531 | DL3C124K | .235 | .625 | DL3D124K | .312 | .813 | DL3E124K | |
| .15 | .235 | .531 | DL3S154K | .235 | .625 | DL3C154K | .235 | .813 | DL3D154K | .312 | .938 | DL3E154K | |
| .18 | .235 | .531 | DL3S184K | .235 | .625 | DL3C184K | .235 | .813 | DL3D184K | .312 | .938 | DL3E184K | |
| .22 | .235 | .531 | DL3S224K | .235 | .625 | DL3C224K | .312 | .813 | DL3D224K | .312 | 1.125 | DL3E224K | |
| .25 | .235 | .531 | DL3S254K | .235 | .625 | DL3C254K | .312 | .813 | DL3D254K | .312 | 1.125 | DL3E254K | |
| .27 | .312 | .531 | DL3S274K | .235 | .625 | DL3C274K | .312 | .813 | DL3D274K | .312 | 1.125 | DL3E274K | |
| .33 | .312 | .531 | DL3S334K | .312 | .625 | DL3C334K | .312 | .813 | DL3D334K | .400 | .938 | DL3E334K | |
| .39 | .312 | .531 | DL3S394K | .312 | .625 | DL3C394K | .312 | .813 | DL3D394K | .400 | 1.125 | DL3E394K | |
| .47 | .312 | .531 | DL3S474K | .312 | .625 | DL3C474K | .312 | .938 | DL3D474K | .400 | 1.125 | DL3E474K | |
| .50 | .312 | .625 | DL3S504K | .312 | .625 | DL3C504K | .312 | .938 | DL3D504K | .400 | 1.125 | DL3E504K | |
| .56 | .312 | .625 | DL3S564K | .312 | .625 | DL3C564K | .312 | 1.125 | DL3D564K | .400 | 1.313 | DL3E564K | |
| .68 | .312 | .625 | DL3S684K | .312 | .781 | DL3C684K | .312 | 1.125 | DL3D684K | .500 | 1.125 | DL3E684K | |
| .75 | .312 | .625 | DL3S754K | .312 | .781 | DL3C754K | .400 | .938 | DL3D754K | .500 | 1.125 | DL3E754K | |
| .82 | .312 | .625 | DL3S824K | .312 | .781 | DL3C824K | .400 | .938 | DL3D824K | .500 | 1.313 | DL3E824K | |
| 1.0 | .312 | .625 | DL3S105K | .400 | .781 | DL3C105K | .400 | 1.125 | DL3D105K | .500 | 1.313 | DL3E105K | |
| 1.2 | .312 | .625 | DL3S125K | .400 | .781 | DL3C125K | .500 | 1.125 | DL3D125K | .562 | 1.813 | DL3E125K | |
| 1.5 | .400 | .625 | DL3S155K | .400 | .781 | DL3C155K | .500 | 1.125 | DL3D155K | .562 | 1.813 | DL3E155K | |
| 1.8 | .400 | .625 | DL3S185K | .400 | .906 | DL3C185K | .500 | 1.125 | DL3D185K | .562 | 1.813 | DL3E185K | |
| 2.0 | .400 | .625 | DL3S205K | .400 | .906 | DL3C205K | .500 | 1.125 | DL3D205K | .562 | 1.813 | DL3E205K | |
| 3.0 | .400 | .813 | DL3S305K | .500 | .906 | DL3C305K | .500 | 1.313 | DL3D305K | .670 | 1.813 | DL3E305K | |
| 4.0 | .400 | .938 | DL3S405K | .562 | 1.063 | DL3C405K | .562 | 1.563 | DL3D405K | .750 | 2.313 | DL3E405K | |
| 5.0 | .400 | .938 | DL3S505K | .562 | 1.063 | DL3C505K | .562 | 1.563 | DL3D505K | .750 | 2.313 | DL3E505K | |
| 6.0 | .500 | .938 | DL3S605K | .562 | 1.313 | DL3C605K | .670 | 1.813 | DL3D605K | 1.000 | 2.062 | DL3E605K | |
| 8.0 | .500 | 1.125 | DL3S805K | .562 | 1.313 | DL3C805K | .670 | 1.813 | DL3D805K | 1.000 | 2.062 | DL3E805K | |
| 10.0 | .500 | 1.125 | DL3S106K | .670 | 1.313 | DL3C106K | .750 | 1.813 | DL3D106K | 1.000 | 2.563 | DL3E106K | |
| 12.0 | .500 | 1.313 | DL3S126K | .670 | 1.313 | DL3C126K | .750 | 2.062 | DL3D126K | | | | |
| 15.0 | .562 | 1.313 | DL3S156K | .750 | 1.313 | DL3C156K | .750 | 2.313 | DL3D156K | | | | |
| 20.0 | .562 | 1.313 | DL3S206K | .750 | 1.813 | DL3C206K | 1.000 | 2.313 | DL3D206K | | | | |
| 30.0 | .670 | 1.313 | DL3S306K | 1.000 | 1.813 | DL3C306K | | | | | | | |
| 40.0 | .750 | 1.313 | DL3S406K | 1.000 | 1.813 | DL3C406K | | | | | | | |
| 50.0 | 1.000 | 1.563 | DL3S506K | | | | | | | | | | |
| 75.0 | 1.000 | 1.813 | DL3S756K | | | | | | | | | | |
| 100.0 | 1.000 | 2.313 | DL3S107K | | | | | | | | | | |

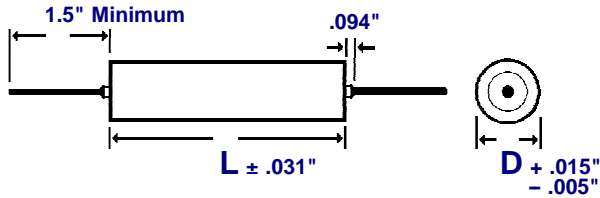
Note: Replace the last digit **K** with the desired tolerance code from the tolerance table. For an in-between value use the next larger value's dimensions. Custom sizes are readily available. All dimensions are in inches.

METALLIZED MYLAR HERMETICALLY SEALED, ROUND METAL CASED CAPACITORS



DL3
METALLIZED MYLAR
HERMETIC SEAL, ROUND
REGULAR SERIES

DIMENSIONS See tables for specific D, L values.



WIRE SIZE (Length 1.5" Minimum)

| BODY DIAMETER (D) | WIRE SIZE | |
|-------------------|-----------|----------|
| | AWG No. | Diameter |
| .175" & .195" | 24 | 0.020" |
| .235" & .312" | 22 | 0.025" |
| .400" & Larger | 20 | 0.032" |

SELECTION AND ORDERING TABLES Select voltage rating, capacitance and tolerance, read Part Number to the right.

| MFD | 400VDC 160VAC | | | 600VDC 230VAC | | | 1000VDC 360VAC | | | |
|-------|---------------|--------------------|----------|---------------|--------------------|----------|----------------|--------------------|----------|--------|
| | RATING | D | L | PART # | D | L | PART # | D | L | PART # |
| | | + .015" - .005" | ± .031" | | + .015" - .005" | ± .031" | | + .015" - .005" | ± .031" | |
| .001 | .235 | .531 | DL3G102K | .235 | .531 | DL3J102K | .312 | 1.125 | DL3M102K | |
| .0012 | .235 | .531 | DL3G122K | .235 | .531 | DL3J122K | .312 | 1.125 | DL3M122K | |
| .0015 | .235 | .531 | DL3G152K | .235 | .531 | DL3J152K | .312 | 1.125 | DL3M152K | |
| .0018 | .235 | .531 | DL3G182K | .235 | .531 | DL3J182K | .312 | 1.125 | DL3M182K | |
| .0022 | .235 | .531 | DL3G222K | .235 | .531 | DL3J222K | .312 | 1.125 | DL3M222K | |
| .0027 | .235 | .531 | DL3G272K | .235 | .531 | DL3J272K | .312 | 1.125 | DL3M272K | |
| .0033 | .235 | .531 | DL3G332K | .235 | .531 | DL3J332K | .312 | 1.125 | DL3M332K | |
| .0039 | .235 | .531 | DL3G392K | .235 | .531 | DL3J392K | .312 | 1.125 | DL3M392K | |
| .0047 | .235 | .531 | DL3G472K | .235 | .531 | DL3J472K | .312 | 1.125 | DL3M472K | |
| .0056 | .235 | .531 | DL3G562K | .235 | .531 | DL3J562K | .312 | 1.125 | DL3M562K | |
| .0068 | .235 | .531 | DL3G682K | .235 | .531 | DL3J682K | .312 | 1.125 | DL3M682K | |
| .0082 | .235 | .531 | DL3G822K | .235 | .531 | DL3J822K | .312 | 1.125 | DL3M822K | |
| .01 | .235 | .625 | DL3G103K | .235 | .813 | DL3J103K | .312 | 1.125 | DL3M103K | |
| .012 | .235 | .625 | DL3G123K | .235 | .813 | DL3J123K | .312 | 1.125 | DL3M123K | |
| .015 | .235 | .625 | DL3G153K | .235 | .813 | DL3J153K | .400 | 1.125 | DL3M153K | |
| .018 | .235 | .625 | DL3G183K | .312 | .813 | DL3J183K | .400 | 1.125 | DL3M183K | |
| .022 | .235 | .625 | DL3G223K | .312 | .813 | DL3J223K | .400 | 1.125 | DL3M223K | |
| .027 | .235 | .813 | DL3G273K | .312 | .813 | DL3J273K | .400 | 1.125 | DL3M273K | |
| .033 | .235 | .813 | DL3G333K | .312 | .813 | DL3J333K | .500 | 1.125 | DL3M333K | |
| .039 | .312 | .813 | DL3G393K | .312 | .938 | DL3J393K | .500 | 1.125 | DL3M393K | |
| .047 | .312 | .813 | DL3G473K | .312 | .938 | DL3J473K | .500 | 1.125 | DL3M473K | |
| .056 | .312 | .813 | DL3G563K | .312 | 1.125 | DL3J563K | .562 | 1.125 | DL3M563K | |
| .068 | .312 | .813 | DL3G683K | .312 | 1.125 | DL3J683K | .562 | 1.125 | DL3M683K | |
| .082 | .312 | .938 | DL3G823K | .400 | .938 | DL3J823K | .562 | 1.500 | DL3M823K | |
| .10 | .312 | .938 | DL3G104K | .400 | 1.125 | DL3J104K | .562 | 1.500 | DL3M104K | |
| .12 | .312 | 1.125 | DL3G124K | .400 | 1.125 | DL3J124K | .562 | 1.500 | DL3M124K | |
| .15 | .400 | .938 | DL3G154K | .500 | 1.125 | DL3J154K | .670 | 1.500 | DL3M154K | |
| .18 | .400 | .938 | DL3G184K | .500 | 1.125 | DL3J184K | .670 | 1.500 | DL3M184K | |
| .22 | .400 | 1.125 | DL3G224K | .500 | 1.125 | DL3J224K | .750 | 1.500 | DL3M224K | |
| .25 | .400 | 1.313 | DL3G254K | .562 | 1.313 | DL3J254K | .750 | 1.500 | DL3M254K | |
| .27 | .400 | 1.313 | DL3G274K | .562 | 1.313 | DL3J274K | .750 | 1.500 | DL3M274K | |
| .33 | .400 | 1.313 | DL3G334K | .562 | 1.313 | DL3J334K | .750 | 1.875 | DL3M334K | |
| .39 | .500 | 1.125 | DL3G394K | .562 | 1.813 | DL3J394K | .750 | 1.875 | DL3M394K | |
| .47 | .500 | 1.313 | DL3G474K | .562 | 1.813 | DL3J474K | 1.000 | 1.875 | DL3M474K | |
| .50 | .500 | 1.313 | DL3G504K | .562 | 1.813 | DL3J504K | 1.000 | 1.875 | DL3M504K | |
| .56 | .500 | 1.313 | DL3G564K | .562 | 1.813 | DL3J564K | 1.000 | 1.875 | DL3M564K | |
| .68 | .562 | 1.313 | DL3G684K | .670 | 1.813 | DL3J684K | 1.000 | 1.875 | DL3M684K | |
| .75 | .562 | 1.313 | DL3G754K | .670 | 1.813 | DL3J754K | 1.000 | 1.875 | DL3M754K | |
| .82 | .562 | 1.813 | DL3G824K | .670 | 1.813 | DL3J824K | 1.000 | 2.625 | DL3M824K | |
| 1.0 | .562 | 1.813 | DL3G105K | .750 | 1.813 | DL3J105K | 1.000 | 2.625 | DL3M105K | |
| 1.2 | .670 | 1.813 | DL3G125K | 1.000 | 1.813 | DL3J125K | 1.000 | 2.625 | DL3M125K | |
| 1.5 | .670 | 1.813 | DL3G155K | 1.000 | 1.813 | DL3J155K | | | | |
| 1.8 | .750 | 1.813 | DL3G185K | 1.000 | 2.063 | DL3J185K | | | | |
| 2.0 | .750 | 1.813 | DL3G205K | 1.000 | 2.063 | DL3J205K | | | | |
| 3.0 | 1.000 | 1.813 | DL3G305K | | | | | | | |
| 4.0 | 1.000 | 2.313 | DL3G405K | | | | | | | |
| 5.0 | 1.000 | 2.313 | DL3G505K | | | | | | | |

TOLERANCE TABLE

Code Tolerance

| | |
|---|-------------|
| A | = ± 0.1% ♦ |
| B | = ± 0.25% ♦ |
| D | = ± 0.5% ♦ |
| F | = ± 1% ♦ |
| G | = ± 2% ♦ |
| H | = ± 3% ♦ |
| J | = ± 5% |
| K | = ± 10% |
| M | = ± 20% |
| N | = ± 30% |
| P | = GMV |
| S | = -10% +30% |
| T | = -10% +50% |
| V | = -10% +20% |
| X | = Special |

♦ Temperature Stabilized

HARDWARE

For use with metal tubes. Add the Code number to the end of the Part Number, include the dash ("-").

CODE DESCRIPTION

- 1 = Tangential Bracket
- 2 = Threaded Neck Term.
- 3 = Flat Lug Terminal
- 4 = 90° Lug Terminal
- 5 = Insulating Sleeve
- 6 = Stud Mounting

Add .015" to the capacitors dimensions for the Insulating Sleeve.

Codes may be combined. Example:
- 35 = Flat Lug Terminal with Insulating Sleeve. (Place lower number first)

Note: Replace the last digit **K** with the desired tolerance code from the tolerance table. For an in-between value use the next larger value's dimensions. Custom sizes are readily available. All dimensions are in inches.

METALLIZED MYLAR CAPACITORS PARAMETRIC TREND CURVES AND ACCEPTANCE CRITERIA

SERIES **D**

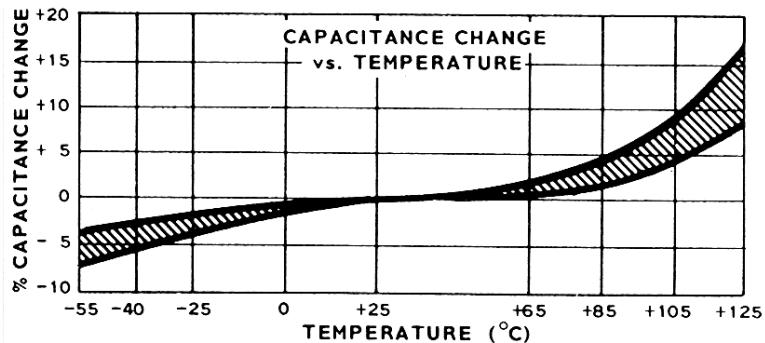
CAPACITANCE

Reference MIL-STD-202, Method 305
Test Frequency: 1000 Hz
Temperature: +25°C

Capacitance Change Over
Temperature.

Acceptance Limits:

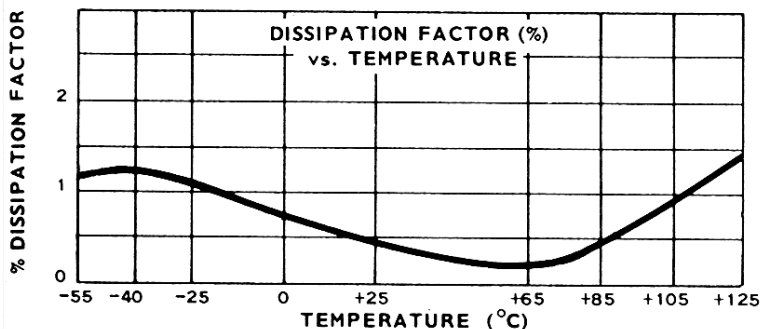
- @ -55°C = -7% Maximum Change
- @ +85°C = +5% Maximum Change
- @ +125°C = ±16% Maximum Change



DISSIPATION FACTOR

Reference MIL-STD-202,
Method 306
Test Frequency: 1000 Hz
Temperature: +25°C

Acceptance Limit: 0.65% Maximum

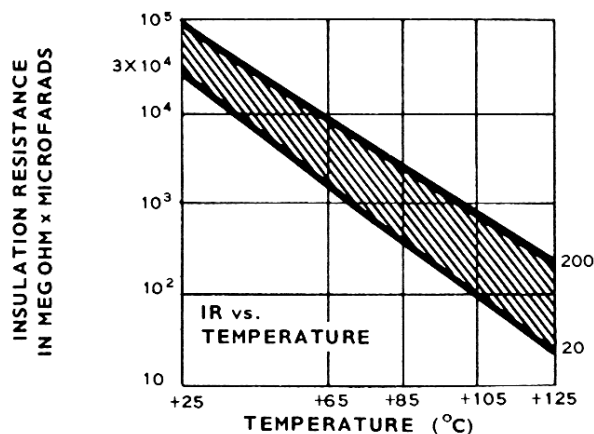


INSULATION RESISTANCE

Reference MIL-STD-202, Method 302
Electrification shall be at rated voltage
or 500 VDC, whichever is less and for
a time not greater than 2 minutes.

Acceptance Limits:

| Test Temperature | Megs x μ f Minimum | Megohms Need not exceed |
|------------------|---------------------------|----------------------------|
| @ +25°C | 10,000 | 30,000 |
| @ +85°C | 100 | 1,000 |
| @ +125°C | 10 | 100 |



VOLTAGE RATING

100% of listed voltage rating from -55°C to +85°C,
derate linearly to 50% of the listed voltage rating at +125°C.

VOLTAGE TEST

Reference MIL-STD-202, Method 301. Surge current is limited to 1 ampere maximum. Voltage applied for 1 minute (maximum) @ +25°C. Ground test is performed terminal to case (where the case is not a terminal) at 200% of the DC voltage rating. Dielectric strength test is performed terminal to terminal at 150% of the DC voltage rating.